



SMART SOLUTIONS FOR A CHANGING WORLD

---

**ANTENNAS**  
C A T A L O G U E

---



# Index

GSM/GPRS/2G ANTENNAS .....	3
3G/UMTS ANTENNAS .....	7
4G/LTE ANTENNAS.....	22
4G/LTE MIMO ANTENNAS .....	38
5G ANTENNAS.....	45
5G MIMO ANTENNAS .....	46
WIFI 2.4/5 GHz ANTENNAS .....	48
WIFI MIMO ANTENNAS .....	65
GNSS ANTENNAS.....	66
169 MHz ANTENNAS.....	75
433 MHz ANTENNAS.....	76
868/915 MHz ANTENNAS.....	79
COMBI GSM+GPS ANTENNAS .....	89
COMBI GSM+GPS+WIFI ANTENNAS .....	90
COMBI 3G+GPS ANTENNAS.....	91
COMBI 3G+GPS/GLONASS+WIFI ANTENNAS.....	97
COMBI 4G+GPS/GLONASS ANTENNAS .....	98
COMBI 4G+WIFI ANTENNAS .....	100
COMBI 4G+GPS+WIFI ANTENNAS .....	101
COMBI GPS+WIFI ANTENNAS.....	103
COMBI GPS+TETRA ANTENNAS .....	104
RFID UHF ANTENNAS.....	106
RF CABLES & CONNECTORS.....	108

## Terminology used for frequency bands

**GSM2** = GSM/GPRS (Europe) 900/1800 MHz

**GSM3** = GSM/GPRS/3G (Europe) 900/1800/2100 MHz

**GSM4** = GSM/GPRS (Europe/USA): 800/900/1800/1900 MHz

**GSM5** = GSM/GPRS/3G (Europe/USA): 800/900/1800/1900/2100 MHz

**3G or UMTS** = 2100 MHz

**LTE or 4G** = EU (800/900/1800/2100/2600 MHz); US (700/850/1700 (AWS)/1900 MHz)

**5G** = 800/900/1800/2100/2600/3500 MHz

**ISM** = 169/433/868 MHz

## MTX-Antenna STUB TARGAN GSM4

### Stub antenna

- Frequency: 850/900/1800/1900 MHz
- Connectors: SMA M/FME F
- Gain: 1 dBi
- Dimensions: 54 mm (without connector)



### ORDERING INFORMATION

118012137	MTX-Antenna STUB TARGAN QUAD GSM4 SMA M R/A
118012138	MTX-Antenna STUB TARGAN QUAD GSM4 FME F R/A
118012139	MTX-Antenna STUB TARGAN QUAD GSM4 SMA M ST

## MTX-Antenna Magnetic GSM2

### Magnetic antenna 22/6 cm

- Frequency: 900/1800 MHz
- Connector: FME F/SMA M/other
- Gain: 21 cm 2.5 dBi/6cm 0 dBi
- Dimensions: 21/6 cm



### ORDERING INFORMATION

<b>118009000</b>	<b>MTX-Antenna Magnetic (6 &amp; 22 cm) GSM2 FME F - RG174 - 3m</b>
<b>118009001</b>	<b>MTX-Antenna Magnetic (6 &amp; 22 cm) GSM2 MMCX M R/A - RG174 - 3m</b>
<b>118009002</b>	<b>MTX-Antenna Magnetic (6 &amp; 22 cm) GSM2 SMA M - RG174 - 3m</b>
118009079	MTX-Antenna Magnetic (6 & 22cm) GSM2 FAKRA D Jack-F - RG174 - 3m
<b>118009024</b>	<b>MTX-Antenna Magnetic 22cm GSM2 FME F - RG174 - 3m</b>
<b>118009042</b>	<b>MTX-Antenna Magnetic 22cm GSM2 MMCX M R/A - RG174 - 3m</b>
<b>118009203</b>	<b>MTX-Antenna Magnetic 22cm GSM2 SMA M - RG174 - 300mm</b>
<b>118009046</b>	<b>MTX-Antenna Magnetic 22cm GSM2 SMA M - RG174 - 3m</b>
<b>118009202</b>	<b>MTX-Antenna Magnetic 22cm GSM2 SMA M - RG174 - 5m</b>
118009220	MTX-Antenna Magnetic 22cm GSM2 SMA M R/A - RG174 - 3m
118009003	MTX-Antenna Magnetic 6cm GSM2 FME F - RG174 - 3m
118009091	MTX-Antenna Magnetic 6cm GSM2 SMA M - RG174 - 3m
118009014	MTX-Antenna Magnetic (6 & 22 cm) GSM2 MMCX M R/A - RG174 - 3m NO LABEL

## MTX-Antenna Magnetic Whip GSM4

### Magnetic antenna 9 cm

- Frequency: 800/900/1800/1900 MHz
- Connector: SMA M/other
- Gain: 0 dBi
- Dimensions: 90 mm



### ORDERING INFORMATION

118009247	MTX-Antenna Magnetic Whip L09 GSM4 SMA M - RG174 - 3m
118009225	MTX-Antenna Magnetic Whip L09 GSM4 SMA M - RG58 - 3.5m

## MTX-Antenna Screwed ESFERA GSM4 IP67

### Screwed antenna

- Frequency: 850/900/1800/1900 MHz
- Connector: FME F/SMA M/other
- Gain: 0 dBi
- Dimensions: 80x23 mm



### ORDERING INFORMATION

118012111	MTX-Antenna Screwed WB20 GSM4 FME F - RG174 - 2m
118012112	MTX-Antenna Screwed WB20 GSM4 SMA M - RG174 - 2m

## MTX-Antenna Adhesive BLADE 091 GSM2

### Adhesive BLADE antenna

- Frequency: 900/1800 MHz
- Connector: FME F/SMA M/other
- Gain: 1 dBi
- Dimensions: 105x15 mm



### ORDERING INFORMATION

118009149	MTX-Antenna Adhesive BLADE 091 GSM2 FME F - RG174 - 3m
118009029	MTX-Antenna Adhesive BLADE 091 GSM2 FME F - RG174 - 5m
118009112	MTX-Antenna Adhesive BLADE 091 GSM2 MMCX M R/A - RG174 - 200mm
118009111	MTX-Antenna Adhesive BLADE 091 GSM2 MMCX M R/A - RG174 - 3m
<b>118009028</b>	<b>MTX-Antenna Adhesive BLADE 091 GSM2 SMA M - RG174 - 3m</b>

## MTX-Antenna Adhesive BLADE GSM4

### Adhesive BLADE antenna

- Frequency: 824-960/1770-1990 MHz
- Connector: FME F/SMA M/other
- Gain: 2 dBi
- Dimensions: 115x22 mm



### ORDERING INFORMATION

118007039	MTX-Antenna Adhesive BLADE GSM4 - RG174 - 3m
118007040	MTX-Antenna Adhesive BLADE GSM4 FAKRA D Jack-F - RG174 - 2m
118007006	MTX-Antenna Adhesive BLADE GSM4 MMCX M R/A - RG174 - 3m
118007037	MTX-Antenna Adhesive BLADE GSM4 MMCX M ST - RG174 - 3m
118007024	MTX-Antenna Adhesive BLADE GSM4 SMA M - RG174 - 300 mm
118007015	MTX-Antenna Adhesive BLADE GSM4 SMA M - RG174 - 4m

## MTX-Antenna Internal ISIS Triband GSM2

### Internal antenna

- Frequency: 900/1800/1900 MHz
- Connector: U.FL/other
- Gain: 1.0 dBi
- Dimensions: 60x17 mm



### ORDERING INFORMATION

118012174	MTX-Antenna Internal ISIS Triband GSM2 U.FL - 10mm
118012077	MTX-Antenna Internal ISIS Triband GSM2 U.FL - RG178 - 300mm

## MTX-Antenna Internal Mini GSM2

### Internal antenna

- Frequency: 900/1800 MHz
- Connector: U.FL/other
- Gain: 0dBi
- Dimensions: 43x6 mm



### ORDERING INFORMATION

118012032	MTX-Antenna Internal Mini GSM Pigtail 60mm
118012021	MTX-Antenna Internal Mini GSM2 U.FL- 100mm
118012027	MTX-Antenna Internal Mini GSM2 W.FL 100mm

## MTX-Antenna Internal MiniQUAD GSM4

### Internal antenna

- Frequency: 850/900/1800/1900 MHz
- Connector: U.FL/other
- Gain: 0dBi
- Dimensions: 44x8 mm



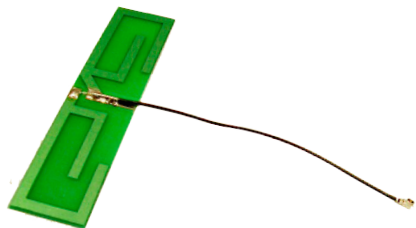
### ORDERING INFORMATION

118012009	MTX-Antenna Internal MiniQUAD GSM4 MMCX R/A - RG178 - 100mm
118012076	MTX-Antenna Internal MiniQUAD GSM4 U.FL - 100mm
118012217	MTX-Antenna Internal MiniQUAD GSM4 U.FL - 150mm

## MTX-Antenna Internal NERIS Triband GSM2

### Internal antenna

- Frequency: 900/1800/1900 MHz
- Connector: U.FL/other
- Gain: 1.0 dBi
- Dimensions: 81x21 mm



### ORDERING INFORMATION

118012037	MTX-Antenna Internal NERIS Triband GSM2 GSC - 100mm
118012036	MTX-Antenna Internal NERIS Triband GSM2 U.FL - 100mm

## MTX-Antenna Internal S-QUAD GSM4

### Internal antenna

- Frequency: 850/900/1800/1900 MHz
- Connector: U.FL/other
- Gain: 1.5 dBi
- Dimensions: 110x21 mm



### ORDERING INFORMATION

118012073	MTX-Antenna Internal S-QUAD GSM4 U.FL - RG178 - 100mm
-----------	---

## MTX-Antenna STUB GSM5

### Stub antenna

- Frequency: 824~894/880~960/1710~1990/1920~2170 MHz
- Connector: FME F/SMA M/other
- Gain: 2 dBi
- Dimensions: 55 mm (without connector)



### ORDERING INFORMATION

<b>118007013</b>	<b>MTX-Antenna STUB GSM5 FME F</b>
<b>118007004</b>	<b>MTX-Antenna STUB GSM5 FME F R/A</b>
<b>118007032</b>	<b>MTX-Antenna STUB GSM5 SMA M</b>
<b>118007008</b>	<b>MTX-Antenna STUB GSM5 SMA M R/A</b>

## MTX-Antenna STUBSW GSM3

### Stub antenna

- Frequency: 900/1800/2100 MHz
- Connector: FME F/SMA M
- Dimensions: 114 mm



### ORDERING INFORMATION

118009159	MTX-Antenna STUBSW GSM3 FME F
118009160	MTX-Antenna STUBSW GSM3 SMA M

## MTX-Antenna STUBSW GSM5

### Stub antenna

- Frequency: 850/900/1800/1900/2100 MHz
- Connector: FME F/SMA M
- Gain: 3 dBi
- Dimensions: 170 mm (without connector)



### ORDERING INFORMATION

<b>118009127</b>	<b>MTX-Antenna STUBSW GSM5 FME F</b>
<b>118009126</b>	<b>MTX-Antenna STUBSW GSM5 SMA M</b>

## MTX-Antenna STUBSW PTR GSM5

### Stub antenna

- Frequency: 824-960/1710-2170 MHz
- Connector: FME F/SMA M
- Gain: 1.5 dBi
- Dimensions 171x18 mm (without connector)



### ORDERING INFORMATION

118012114

MTX-Antenna STUBSW PTR2100 GSM5 SMA M

## MTX-Antenna STUBSW TBR GSM3

### Stub antenna

- Frequency: 900/1800/2100 MHz
- Connector: FME F/SMA M
- Gain: 2 dBi
- Dimensions: 138x13 mm (without connector)



### ORDERING INFORMATION

118012110

MTX-Antenna STUBSW TBR2100 GSM3 SMA M

## MTX-Antenna Magnetic Whip L20 GSM5 3dBi

### Magnetic antenna

- Frequency: 850/900/1800/1900/2100 MHz
- Connector: FME F/SMA M
- Gain: 3 dBi
- Dimensions: 200 mm



### ORDERING INFORMATION

118009097

MTX-Antenna Magnetic Whip L20 GSM5 3dBi FME F - RG174 - 200mm

118009034

MTX-Antenna Magnetic Whip L20 GSM5 3dBi FME F - RG174 - 3m

118009215

MTX-Antenna Magnetic Whip L20 GSM5 3dBi MMCX M R/A - RG174 - 3m

118009140

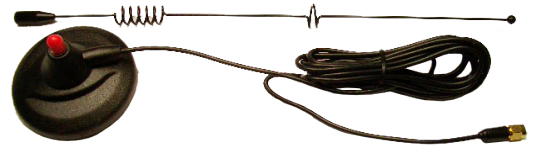
MTX-Antenna Magnetic Whip L20 GSM5 3dBi SMA M - RG174 - 3m



## MTX-Antenna Magnetic Whip L30 GSM3 5dBi

### Magnetic antenna

- Frequency: 900/1800/2100 MHz
- Connector: FME F/SMA M
- Gain: 5 dBi
- Dimensions: 300 mm



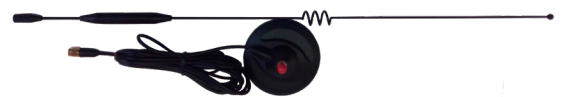
### ORDERING INFORMATION

118009259	MTX-Antenna Magnetic Whip L30 GSM3 5dBi FME F - LL195 - 10m
<b>118009041</b>	<b>MTX-Antenna Magnetic Whip L30 GSM3 5dBi SMA M - RG174 - 3m</b>
118009283	MTX-Antenna Magnetic Whip L30 GSM3 5dBi FME F - RG174 - 3m
118009283	MTX-Antenna Magnetic Whip L30 GSM3 5dBi SMA M - RG174 - 4m
118009307	MTX-Antenna Magnetic Whip L30 GSM5 5dBi SMAM - RG58 - 20m

## MTX-Antenna Magnetic Whip L50 GSM5 7dBi

### Magnetic antenna

- Frequency: 800/900/1800/1900/2100 MHz
- Connector: FME F/SMA M
- Gain: 7 dBi
- Dimensions: 480 mm



### ORDERING INFORMATION

<b>118009255</b>	<b>MTX-Antenna Magnetic Whip L50 GSM5 7dBi FME F - RG174 - 3m</b>
118009243	MTX-Antenna Magnetic Whip L50 GSM5 7dBi FME F - RG58U - 5m
<b>118009212</b>	<b>MTX-Antenna Magnetic Whip L50 GSM5 7dBi SMA M - RG174 - 3m</b>
118009226	MTX-Antenna Magnetic Whip L50 GSM5 7dBi SMA M - RG58 - 5m

## MTX-Antenna Magnetic STUB L07 GSM5

### Magnetic antenna

- Frequency: 800/900/1800/1900/2100 MHz
- Connector: FME F/SMA M
- Gain: 2 dBi
- Dimensions: 70 mm



### ORDERING INFORMATION

118007020	MTX-Antenna Magnetic STUB L07 GSM5 FME F - RG174 - 2.5m
<b>118007021</b>	<b>MTX-Antenna Magnetic STUB L07 GSM5 SMA M - RG174 - 2.5m</b>

## MTX-Antenna Magnetic STUB L07 OPN GSM5

### Magnetic antenna

- Frequency: 824-960/1710-2170 MHz
- Connector: SMA M
- Gain: 2 dBi
- Dimensions: 71.5x30 mm



### ORDERING INFORMATION

118016074	MTX-Antenna Magnetic STUB L07 OPN301M GSM5 SMA M - RG174 - 600mm
-----------	--

## MTX-Antenna Magnetic STUB L09 PENTAMAG GSM5

### Magnetic antenna

- Frequency: 800/900/1800/1900/2100 MHz
- Connector: FME F/SMA M
- Gain: 2 dBi
- Dimensions: 90 mm



### ORDERING INFORMATION

118012189	MTX-Antenna Magnetic STUB L09 PENTAMAG GSM5 FME F - RG174 - 3m
<b>118012121</b>	<b>MTX-Antenna Magnetic STUB L09 PENTAMAG GSM5 SMA M - RG174 - 3m</b>
118012326	MTX-Antenna Magnetic STUB L09 PENTAMAG GSM5 SMA M R/A - RG174 - 3m

## MTX-Antenna Magnetic STUB L11 GSM3

### Magnetic antenna

- Frequency: 900/1800/2100 MHz
- Connector: FME F/SMA M
- Gain: 2.5 dBi
- Dimensions: 110 mm



### ORDERING INFORMATION

118009051	MTX-Antenna Magnetic STUB L11 GSM3 SMA M - RG174 - 3m
118009322	MTX-Antenna Magnetic STUB L11 GSM3 MCX M R/A - RG174 - 10m
118009311	MTX-Antenna Magnetic STUB L11 GSM3 MCX M R/A - RG174 - 3m

## MTX-Antenna Magnetic STUB L12 GSM5

### Magnetic antenna

- Frequency: 800/900/1800/1900/2100 MHz
- Connector: FME F/SMA M
- Gain: 2 dBi
- Dimensions: 120 mm



### ORDERING INFORMATION

118014023	MTX-Antenna Magnetic STUB L12 GSM5 FME F - RG174 - 3m
118014011	MTX-Antenna Magnetic STUB L12 GSM5 SMA M - RG174 - 3m
118014019	MTX-Antenna Magnetic STUB L12 GSM5 SMA M R/A - RG174 - 3m

## MTX-Antenna Screwed CPO GSM5

### Screwed antenna

- Frequency: 870-960/1710-2170 MHz
- Connector: FME F/SMA M/other
- Gain: 3 dBi
- Dimensions: 102x33.5 mm



### ORDERING INFORMATION

118012171	MTX-Antenna Screwed CPO GSM5 FME F - RG174 - 2m
118012191	MTX-Antenna Screwed CPO GSM5 FME F - RG174 - 3m
118012324	MTX-Antenna Screwed CPO GSM5 SMA M - RG174 - 1m
<b>118012113</b>	<b>MTX-Antenna Screwed CPO GSM5 SMA M - RG174 - 2m</b>
118012176	MTX-Antenna Screwed CPO GSM5 SMA M - RG174 - 3m
118012162	MTX-Antenna Screwed CPO GSM5 SMA M R/A - RG174 - 2m
118012240	MTX-Antenna Screwed CPO GSM5 SMA M R/A - RG174 - 5m
118012362	MTX-Antenna Screwed CPO GSM5 U.FL - 500mm

## MTX-Antenna Screwed ESFERA GSM5

### Screwed antenna

- Frequency: 800/900/1800/1900/2100 MHz
- Connector: FME F/SMA M/other
- Dimensions: 53x23 mm



### ORDERING INFORMATION

118009170	MTX-Antenna Screwed ESFERA GSM5 - RG174 - 200mm
118009222	MTX-Antenna Screwed ESFERA GSM5 - RG316 - 200mm
<b>118009169</b>	<b>MTX-Antenna Screwed ESFERA GSM5 FME F - RG174 - 2m</b>
118009261	MTX-Antenna Screwed ESFERA GSM5 SMA M - RG174 - 200mm
<b>118009153</b>	<b>MTX-Antenna Screwed ESFERA GSM5 SMA M - RG174 - 2m</b>
118009219	MTX-Antenna Screwed ESFERA GSM5 SMA M - RG174 - 600mm
118009173	MTX-Antenna Screwed ESFERA GSM5 SMA M - RG174 - 8m
118009302	MTX-Antenna Screwed ESFERA GSM5 FME F - RG174 - 3m
118009289	MTX-Antenna Screwed ESFERA (GSM5 FME F) + (GPS SMA M) - RG174 - 150mm
118009147	MTX-Antenna Screwed ESFERA (GSM5 SMA M) + (GPS SMA M) - RG174 - 3m

## MTX-Antenna Screwed ESFERA Block GSM5

### Screwed antenna

- Frequency: 800/900/1800/1900/2100 MHz
- Connector: FME F/SMA M/other
- Gain: 0 dBi
- Dimensions 53x23 mm



### ORDERING INFORMATION

118009231	MTX-Antenna Screwed ESFERA IP67 GSM5 - RG174 - 200mm
118009271	MTX-Antenna Screwed ESFERA IP67 GSM5 U.FL 1.37 - 500mm
118009308	MTX-Antenna Screwed ESFERA IP67 GSM5 SMA M - RG174 - 2m

## MTX-Antenna Screwed ESFERA Block GSM5

### Screwed antenna

- Frequency: 800/900/1800/1900/2100 MHz
- Connector: FME F/SMA M/other
- Gain: 0 dBi
- Dimensions 53x23 mm



### ORDERING INFORMATION

118009231	MTX-Antenna Screwed ESFERA IP67 GSM5 - RG174 - 200mm
118009271	MTX-Antenna Screwed ESFERA IP67 GSM5 U.FL 1.37 - 500mm
118009308	MTX-Antenna Screwed ESFERA IP67 GSM5 SMA M - RG174 - 2m

## MTX-Antenna Screwed OPN6004B GSM5

### Screwed antenna

- Frequency: 800/900/1800/1900/2100 MHz
- Connector: SMA M
- Gain: 2.14 dBi
- Dimensions: 80.5x75.5 mm



### ORDERING INFORMATION

118016039	MTX-Antenna Screwed OPN6004B GSM5 - SMA M - 2.5m
118016154	MTX-Antenna Screwed OPN6004B TH19 GSM5 SMA M - RG174 - 2.5m

## MTX-Antenna Screwed OPN660 GSM5+GPS

### Screwed antenna

- Frequency: 800/900/1800/1900/2100 MHz
- Connector: SMA M
- Gain: ~-3.6, ~-3.3 dBi
- Dimensions: 77.3x15 mm



### ORDERING INFORMATION

118016134	MTX-Antenna Screwed OPN660 (GSM5 SMA M)+ (GPS SMA M) - RG174 - 3m
118016133	MTX-Antenna Screwed OPN660 (GSM5 SMA M)+ (GPS SMA M) - RG174 - 5m

## MTX-Antenna Adhesive BLADE OPN5004 GSM5

### Adhesive antenna

- Frequency: 800/900/1800/1900/2100 MHz
- Connector: SMA M
- Gain: 4 dBi
- Dimensions: 126.5x22 mm



### ORDERING INFORMATION

118016168	MTX-Antenna Adhesive BLADE OPN5004 GSM5 4dBi SMA M - RG174 - 800mm
-----------	--

## MTX-Antenna Screwed ROOFBALL GSM3

### Screwed antenna

- Frequency: 900/1800/2100 MHz
- Connector: FME F/SMA M
- Gain: 0 dBi
- Dimensions: 53x30x30 mm



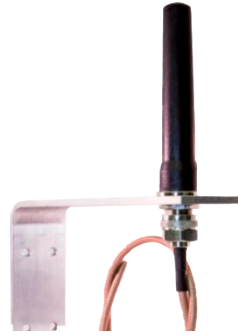
### ORDERING INFORMATION

<b>118009045</b>	<b>MTX-Antenna Screwed ROOFBALL GSM3 FME F - RG174 - 5m</b>
118009063	MTX-Antenna Screwed ROOFBALL GSM3 MMCX M R/A - RG174 - 3m
118009049	MTX-Antenna Screwed ROOFBALL GSM3 SMA M - RG174 - 5m
118009314	MTX-Antenna Screwed ROOFBALL (GSM3 SMA M) + (GPS SMA M) - RG174 - 1m

## MTX-Antenna Screwed Stub WallMount GSM5

### Wall mount, water proof antenna

- Frequency: 824-960/1710-2170MHz
- Connector: N F
- Gain: 2 dBi
- Polarisation: linear-vertical
- Dimensions: 116 mm + connector + bracket



### ORDERING INFORMATION

118012327	MTX-Antenna STUB Screwed WCO GSM5 N F
118012377	MTX-Antenna STUB Screwed WCO GSM5 SMA M - RG240 - 12m

## MTX-Antenna Screwed STUBSW GSM5

### Screwed stub 1/2 wave antenna

- Frequency: 824-960/1710-2170 MHz
- Connector: U.FL/other
- Gain: 1.5 dBi
- Dimensions: 183x18 mm approx. + mouting stud



### ORDERING INFORMATION

118012379	MTX-Antenna STUBSW Screwed PTF GSM5 + Cable U.FL - 125mm
-----------	--

## MTX-Antenna Adhesive BLADE GSM5

### Adhesive antenna

- Frequency: 800/900/1800/1900/2100 MHz
- Connector: FME F/SMA M/other
- Gain: 2 dBi
- Dimensions: 115x22 mm



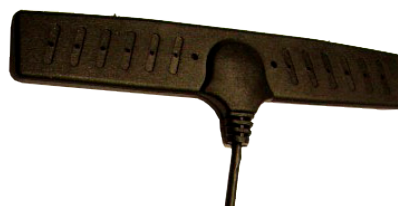
### ORDERING INFORMATION

<b>118007003</b>	<b>MTX-Antenna Adhesive BLADE GSM5 FME F - RG174 - 3 m</b>
118014024	MTX-Antenna Adhesive BLADE GSM5 SMA M - RG174 - 1.5m
118014022	MTX-Antenna Adhesive BLADE GSM5 SMA M - RG174 - 150mm
<b>118007002</b>	<b>MTX-Antenna Adhesive BLADE GSM5 SMA M - RG174 - 3 m</b>

## MTX-Antenna Adhesive BLADEMID GSM3

### Adhesive antenna

- Frequency: 900/1800/2100 MHz
- Connector: FME F/SMA M/other
- Gain: 2.5 dBi
- Dimensions: 110x18 mm



### ORDERING INFORMATION

118009047	MTX-Antenna Adhesive BLADEMID GSM3 FME F - RG174 - 2.5m
118009114	MTX-Antenna Adhesive BLADEMID GSM3 SMA M - RG174 - 2.5m
118009234	MTX-Antenna Adhesive BLADEMID GSM3 SMA M R/A - RG174 - 2.5m

## MTX-Antenna Adhesive BLADE OPN GSM5

### Adhesive BLADE antenna

- Frequency: 824-960/1770-1990 MHz
- Connector: FME F/SMA M/other
- Gain: 3 dBi
- Dimensions: 115x22 mm



### ORDERING INFORMATION

118016014	MTX-Antenna Adhesive Blade OPN550 White GSM5 MMCX M R/A - RG174 - 183mm
-----------	---

## MTX-Antenna Adhesive ESFERA GSM5+GPS

### Adhesive ESFERA antenna

- Frequency: 800/900/1800/1900/2100 MHz
- Connector: MMCX M/SMA M
- Gain: 0 dBi
- Dimensions: Ø50.40x17 mm



### ORDERING INFORMATION

118009030	MTX-Antenna Adhesive ESFERA (GSM5 MMCX M) + (GPS SMA M) - RG174 - 5m
-----------	--



## MTX-Antenna Adhesive OPN4800 GSM5+GPS

### Adhesive antenna

- Frequency: 800/900/1800/1900/2100 MHz
- Connector: FME F/SMA M
- Gain: ~3.0, ~1.3 dBi
- Dimensions: 83x35x13.3 mm



### ORDERING INFORMATION

118016137	MTX-Antenna Adhesive OPN4800 (GSM5 FME F) + (GPS SMA M) - RG174 - 3m
-----------	--

## MTX-Antenna Omni FIBERGLASS GSM5

### Omni FIBERGLASS antenna

- Frequency: 850/900/1800/1900/2100 MHz
- Connector: N F
- Gain: 7 dBi
- Dimensions: 756 mm



### ORDERING INFORMATION

<b>118009258</b>	<b>MTX-Antenna Omni FIBERGLASS GSM5 7dBi N F</b>
<b>118008202</b>	<b>MTX-Cable FME F - N M - LL195 - 5m</b>
<b>118008552</b>	<b>MTX-Cable SMA M - N M - LL195 - 5m</b>
118009068	MTX-Antenna Omni FIBERGLASS GSM5 7dBi N F + FME F - N M - LL195 - 5m
<b>118009131</b>	<b>MTX-Antenna Omni FIBERGLASS GSM5 7dBi N F + SMA M - N M - LL195 - 5m</b>
118009218	MTX-Antenna Omni FIBERGLASS GSM5 7dBi N F + SMA M - N M - LMR400 - 5m

## MTX-Antenna YAGI Radome 3G /2.4GHz

### Yagi antenna

- Frequency: 1.8/1.9/2.1/2.4/5/3.5GHz
- Connector: SMA M
- Gain: 16 dBi
- Dimensions: 345x135x73 mm



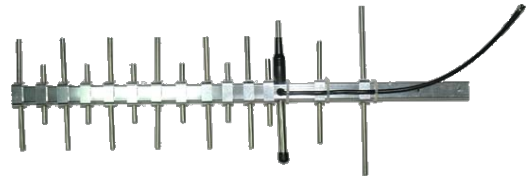
### ORDERING INFORMATION

118012378	MTX-Antenna Yagi-Radom SPH GSM3 1.5-2.4-6GHz 16dBi SMA F
-----------	--

## MTX-Antenna YAGI GSM5

### Yagi antenna

- Frequency: 800/900/1800/1900/2100 MHz
- Connector: SMA M
- Gain: 10 dBi
- Dimensions: 351 mm



### ORDERING INFORMATION

118009137	MTX-Antenna YAGI GSM5 10dBi SMA M + Cable SMA F BH - FME F - LL195 - 10m
<b>118009129</b>	<b>MTX-Antenna YAGI GSM5 10dBi SMA M + Cable SMA M - SMA F BH - LL195 - 10m</b>
118009264	MTX-Antenna YAGI GSM5 10dBi SMA M - 150mm
118008556	MTX-Cable SMA M - SMA F BH - LL195 - 10m
118008557	MTX-Cable SMA M - SMA F BH - LL195 - 5m
118008549	MTX-Cable SMA F - FME F - LL195 - 10m
118008548	MTX-Cable SMA F - FME F - LL195 - 5m

## MTX-Antenna Internal AD20 GSM5

### Internal antenna

- Frequency: 850/900/1800/1900/2100 MHz
- Connector: U.FL/other
- Gain: 0.0 dBi
- Dimensions: 47.2x15.1 mm



### ORDERING INFORMATION

118012160	MTX-Antenna internal AD20 GSM5 U.FL 100mm
-----------	---

## MTX-Antenna Internal Flexible GSM5

### Internal antenna

- Frequency: 850/900/1800/1900/2100 MHz
- Connector: U.FL/other
- Gain: 0 dBi
- Dimensions: 70x20x0.5 mm



### ORDERING INFORMATION

118009223	MTX-Antenna Internal Adhesive Flexible GSM5 - U.FL 100mm
-----------	--

## MTX-Antenna Internal OPN Flexible Polymer GSM5

### Internal antenna

- Frequency: 824-960/1710-2170 MHz
- Connector: U.FL/other
- Gain: 2 dBi
- Dimensions: 70.4x26.4x0.1 mm



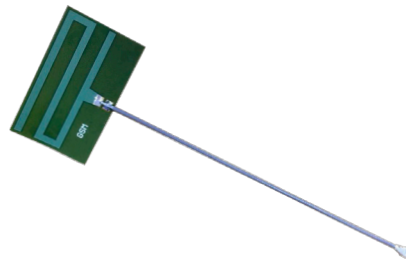
### ORDERING INFORMATION

118016114	MTX-Antenna Internal Adhesive OPNF0304 GSM5 U.FL - 80mm
-----------	---

## MTX-Antenna Internal Flex PCB GSM5

### Internal flex antenna

- Frequency: 800/900/1800/1900/2100 MHz
- Connector: U.FL
- Gain: 1 dBi
- Dimensions: 96x21 mm



### ORDERING INFORMATION

118009273	MTX-Antenna Internal flex PCB GSM5 U.FL - 100mm
-----------	---

## MTX-Antenna Internal OPN GSM5

### Internal antenna

- Frequency: 850/900/1800/1900/2100 MHz
- Connector: U.FL/other
- Gain: 3.0 dBi
- Dimensions: 75x8 mm



### ORDERING INFORMATION

118016063	MTX-Antenna Internal OPNC102 GSM5 U.FL - 250 mm
118016081	MTX-Antenna Internal OPNC102 GSM5 U.FL - 80mm

## MTX-Antenna Internal Adhesive OPNF0604 GSM5

### Internal adhesive antenna

- Frequency: 800/900/1800/1900/2100 MHz
- Connector: U.FL
- Gain: ~0.7, ~0.7 dBi
- Dimensions: 74.9x8.1x0.1 mm



### ORDERING INFORMATION

118016163	MTX-Antenna Internal Adhesive OPNF0604 GSM5 U.FL1.37 - 100mm
-----------	--

## MTX-Antenna Internal OPNP1004 GSM5

### Omni FIBERGLASS antenna

- Frequency: 800/900/1800/1900/2100 MHz
- Connector: U.FL
- Gain: 1.3 dBi
- Dimensions: 37.8x7.2x0.8 mm



### ORDERING INFORMATION

118016165	MTX-Antenna Internal OPNP1004 GSM5 1.3dBi U.FL1.37 - 100mm
-----------	--

## MTX-Antenna Internal QUINTUS GSM5

### Internal antenna

- Frequency: 850/900/1800/1900/2100 MHz
- Connector: U.FL/other
- Gain: 2.0 dBi
- Dimensions: 83x22 mm



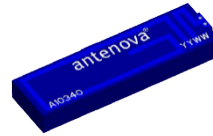
### ORDERING INFORMATION

118012084	MTX-Antenna Internal QUINTUS GSM5 MMCX M R/A - RG178 - 160mm
118012220	MTX-Antenna Internal QUINTUS GSM5 SMA M - RG178 - 1m
<b>118012079</b>	<b>MTX-Antenna Internal QUINTUS GSM5 U.FL - 100mm</b>
118012218	MTX-Antenna Internal QUINTUS GSM5 U.FL - 200mm

## MTX-Antenna Internal PCB Calvus GSM5

### PCB-SMD antenna

- Frequency: 824-960/1710-2170 MHz
- Connector: SMD mounting
- Gain: 1.2/1.8 dBi
- Dimensions: 27x8x3.2 mm



### ORDERING INFORMATION

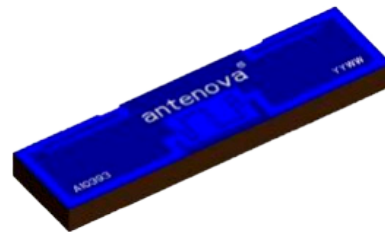
QUITAR

MTX-Antenna Internal PCB CALVUS GSM5

## MTX-Antenna Internal PCB Rubra GSM5

### PCB-SMD antenna

- Frequency: 824-960/1710-2170 MHz
- Connector: SMD Mounting
- Gain: 1.8/1.6 dBi
- Dimensions: 40x10.4x3.2 mm



### ORDERING INFORMATION

QUITAR

MTX-Antenna Internal PCB Rubra-A10393 GSM5 40x10.4 x3.2

## MTX-Antenna STUBFLATSW LTE700/2600

### Stub antenna

- Frequency: 699-960/1710-2690 MHz
- Connector: SMA M
- Gain: 2.9 dBi
- Dimensions: 135x19x10 mm



### ORDERING INFORMATION

118016087	MTX-Antenna STUBFLATSW OPNW1124 GSM5+LTE700/2600 2.9 dBi SMA M
-----------	--

## MTX-Antenna STUBSW LTE2600

### Stub antenna

- Frequency: 824-960/1710-1880/2550-2650 MHz
- Connector: SMA M
- Gain: 5 dBi
- Dimensions: 280 mm



### ORDERING INFORMATION

<b>118009240</b>	<b>MTX-Antenna STUBSW GSM5+LTE2600 5dbi SMA M</b>
118009224	MTX-Antenna STUBSW GSM5+LTE2600 5dbi SMA M + MagneticBase SMA M - RG174 - 2m
<b>118009242</b>	<b>MTX-Antenna STUBSW GSM5+LTE2600 5dbi SMA M + MagneticBase SMA M - RG174 - 3m</b>
118009224	MTX-Antenna STUBSW GSM5+LTE2600 5dbi SMA M + MagneticBase SMA M - RG174 - 2m
118009312	MTX-Antenna STUBSW GSM5+LTE2600 5dbi SMA M -NL

## MTX-Antenna STUBSW PTR LTE2600

### Stub antenna

- Frequency: 806-960/1710-2170/2500-2700 MHz
- Connector: SMA M
- Gain: 1.5 dBi
- Dimensions: 171x18 mm



### ORDERING INFORMATION

118012188	MTX-Antenna STUBSW PTR GSM5+LTE2700 SMA M
-----------	---

## MTX-Antenna STUBSW WTR LTE700/2600

### Stub antenna

- Frequency: 690-960/1710-2700 MHz
- Connector: SMA M
- Gain: 1 dBi
- Dimensions: 171x18 mm



### ORDERING INFORMATION

118012332

MTX-Antenna STUBSW WTR GSM5+LTE700/2600 SMA M

## MTX-Antenna STUBSW\_EA LTE2600

### Stub antenna

- Frequency: 824-960/1710-1880/2550-2650 MHz
- Connector: SMA M
- Gain: 5 dBi
- Dimensions: 270x17 mm



### ORDERING INFORMATION

118009275

MTX-Antenna STUBSW-EA GSM5+LTE2600 5dbi SMA M

118009209

MTX-Antenna STUBSW-EA GSM5+LTE2600 5dbi SMA M + MagneticBase FME F - RG174 - 3m

## MTX-Antenna STUB Screwed OPN2124 GSM5+868+LTE700/2600

### Stub antenna

- Frequency: 700/800/868/900/1800/1900/2100 /2600MHz
- Connector: Pigtail
- Gain: ~4.1, ~2.9, ~0.6 dBi
- Dimensions: 271×30×115 mm



### ORDERING INFORMATION

118016150

MTX-Antenna STUB Screwed OPN2124 GSM5+868+LTE700/2600 Pigtail - RG58 - 2m

## MTX-Antenna STUBBY GSM5+LTE700/2600

### Stub antenna

- Frequency: 700/800/900/1800/1900/2100/2600 MHz
- Connector: SMA M, SMA M R/A
- Gain: 1.5 dBi
- Dimensions: 53x7 mm



### ORDERING INFORMATION

118012390	MTX-Antenna STUBBY GSM5+LTE700/2600 1/1.5 dBi SMA M
118012391	MTX-Antenna STUBBY GSM5+LTE700/2600 1/1.5 dBi SMA M R/A
118009286	MTX-Antenna STUBBY GSM5+LTE700/2700 SMA M R/A

## MTX-Antenna STUBDUCKSW GSM5+LTE700/2700

### Stub antenna

- Frequency: 700/800/900/1800/1900/2100/2600/2700 MHz
- Connector: SMA M
- Gain: 5 dBi
- Dimensions: 233x24 mm



### ORDERING INFORMATION

118009317	MTX-Antenna STUBDUCKSW GSM5+LTE700/2700 5dbi SMA M
-----------	--

## MTX-Antenna Magnetic Whip L40 GSM5+LTE700/2700

### Magnetic antenna

- Frequency: 700/800/900/1800/1900/2100/2600/2700 MHz
- Connector: SMA M
- Gain: 7 dBi
- Dimensions: 424x81 mm



### ORDERING INFORMATION

118009325	MTX-Antenna Magnetic Whip L40 GSM5+LTE700/2700 7dBi SMA M - LL195 - 3m
-----------	--



## MTX-Antenna Magnetic Whip L33 GSM5+LTE700/2600

### Magnetic antenna

- Frequency: 700/800/900/1800/1900/2100/2600 MHz
- Connector: SMA M
- Gain: 5 dBi
- Dimensions: 327.4x40.7 mm



### ORDERING INFORMATION

118009287	MTX-Antenna Magnetic Whip L33 GSM5+LTE700/2600 5dBi SMA M - LL195 - 3m
-----------	--

## MTX-Antenna Magnetic STUB L11 L-MAG LTE700/2600

### Magnetic antenna

- Frequency: 690-960/1710-2700 MHz
- Connector: FME F/SMA M
- Gain: 2.0 dBi/4 dBi
- Dimensions: 110x 30 mm LxDiam
- Additional: requires ground plane



### ORDERING INFORMATION

118012355	MTX-Antenna Magnetic STUB L11 L-MAG GSM5+LTE700/2600 SMA M - RG174 - 3m
-----------	---

## MTX-Antenna Magnetic STUB JC L12 GSM5+LTE700/2700

### Magnetic antenna

- Frequency: 700/800/900/1800/1900/2100/2600/2700 MHz
- Connector: SMA M
- Gain: 2 dBi
- Dimensions: 133.8x29.5 mm



### ORDERING INFORMATION

118006104	MTX-Antenna Magnetic STUB JC L12 GSM5+LTE700/2700 2dBi SMA M - RG174 - 3m
-----------	---

## MTX-Antenna Magnetic STUB L9 GSM5+LTE2700

### Magnetic antenna

- Frequency: 800/900/1800/1900/2100/2600/2700 MHz
- Connector: SMA M
- Gain: 3 dBi
- Dimensions: 89x29 mm



### ORDERING INFORMATION

118009296	MTX-Antenna Magnetic STUB L9 GSM5+LTE2700 3dBi SMA M - RG174 - 2m
-----------	---

## MTX-Antenna Screwed Button GSM5+LTE700/2700

### Screwed antenna

- Frequency: 700/800/900/1800/1900/2100/2600/2700 MHz
- Connector: SMA M
- Gain: 4.3 dBi
- Dimensions: 62.7x27.5 mm



### ORDERING INFORMATION

118012415	MTX-Antenna Screwed Button GSM5+LTE700/2700 4.3dBi SMA M - RG174 - 2m
-----------	---

## MTX-Antenna Screwed CPO LTE2600

### Screwed antenna

- Frequency: 1710-2170/2500-2700 MHz
- Connector: SMA M
- Gain: 3 dBi
- Dimensions: 102x33.5 mm



### ORDERING INFORMATION

118012204	MTX-Antenna Screwed CPO 3G+LTE2600 SMA M - RG174 - 2m
118012199	MTX-Antenna Screwed CPO 3G+LTE2600 SMA M - RG174 - 3m

## MTX-Antenna Screwed CLO GSM5+LTE700/2600

### Screwed antenna

- Frequency: 700/800/900/1800/1900/2100/2600 MHz
- Connector: SMA M R/A
- Gain: 3.7 dBi
- Dimensions: 106x33.5 mm



### ORDERING INFORMATION

118012392

MTX-Antenna Screwed CLO GSM5+LTE700/2600 3.7dBi SMA M R/A - RG174 - 2m

## MTX-Antenna Screwed DASH-1 GSM5+LTE700/2700

### Screwed antenna

- Frequency: 700/800/900/1800/1900/2100/2600/2700 MHz
- Connector: SMA M
- Gain: 4 dBi
- Dimensions: 258x13x34 mm



### ORDERING INFORMATION

118010115

MTX-Antenna Screwed DASH-1 GSM5+LTE700/2700 4dBi SMA M - RG174 - 1m

## MTX-Antenna Screwed ESFERA IP67 GSM5+LTE700/2700

### Screwed antenna

- Frequency: 700/800/900/1800/1900/2100/2600/2700 MHz
- Connector: U.FL
- Gain: 0-3 dBi
- Dimensions: 524.6x54.4 mm



### ORDERING INFORMATION

118009319

MTX-Antenna Screwed ESFERA IP67 GSM5+LTE700/2700 0-3dBi U.FL 1.37 - 500mm

## MTX-Antenna Screwed GSM5+LTE700/2600

### Screwed antenna

- Frequency: 700/800/900/1800/1900/2100/2600 MHz
- Connector: SMA M
- Gain: 0-4 dBi
- Dimensions: 100x26 mm



### ORDERING INFORMATION

118009304

MTX-Antenna Screwed GSM5+LTE700/2600 0-4dBi SMA M - RG174 -2m

## MTX-Antenna Screwed OPN LTE700/2600

### Screwed antenna

- Frequency: 698-960/1710-2170/2500-2690 MHz
- Connector: SMA M and other
- Gain: 3 dBi
- Dimensions: 77.3x65.5 mm



### ORDERING INFORMATION

118016102

MTX-Antenna Screwed OPN6A24 GSM5+LTE700/2600 FME F - LMR100 - 5m

## MTX-Antenna Screwed OPN6024B GSM5+LTE700/2600

### Screwed antenna

- Frequency: 700/800/900/1800/1900/2100/2600 MHz
- Connector: SMA M
- Gain: 1.8-4.4 dBi
- Dimensions: 80x74 mm



### ORDERING INFORMATION

118016139

MTX-Antenna Screwed OPN6024B GSM5-LTE700/2600 - SMA M - 2m

## MTX-Antenna Screwed OPN7724 GSM5+LTE700/2600

### Screwed antenna

- Frequency: 700/800/900/1800/1900/2100/2600 MHz
- Connector: SMA M
- Gain: 4 dBi
- Dimensions: Ø60x69 mm



### ORDERING INFORMATION

118016170	MTX-Antenna Screwed OPN7724 GSM5-LTE700/2600 4dBi SMA M - LL100 - 2m
-----------	--

## MTX-Antenna Screwed STUB WallMount 868+LTE700/2600

### Stub antenna

- Frequency: 698-960/1710-2170/2500-2700 MHz
- Connector: SMA M/other
- Average gain: 2.3/2.9/3.8 dBi
- Power Rating: 25W
- Dimensions: 240x115x30 mm (max.)



### ORDERING INFORMATION

118016033	MTX-Antenna STUB Screwed OPN205 GSM5+868+LTE700/2600 Pigtail - RG58 - 2m
118016035	MTX-Antenna STUB Screwed OPN205 GSM5+868+LTE700/2600 SMA M - RG58 - 5m

## MTX-Antenna Screwed LPO GSM5/LTE700/2600+2.4/5GHz

### LPO antenna

- Frequency: 700/800/900/1800/1900/2100/2600 MHz, 2.4/5 GHz
- Connector: SMA M/SMA M RP
- Average gain: ? dBi
- Dimensions: ? mm

### ORDERING INFORMATION

118012388	MTX-Antenna Screwed LPO (GSM5/LTE700/2600 SMA M )+(2.4/5MHz x2 SMA M RP) - RF195 - 5m
-----------	---

## MTX-Antenna Screwed OPN7750 GSM5+LTE700/2700+2.4/5GHz+GPS-GLN

### Screwed antenna

- Frequency: 700/800/900/1800/1900/2100/2600/2700 MHz, 2.4/5 GHz
- Connector: U.FL
- Average gain: ~2.0, ~4.5, ~3.7 dBi
- Dimensions: Ø60x69 mm



### ORDERING INFORMATION

118016174	MTX-Antenna Screwed OPN7750 (GSM5+LTE700/2700 U.FL)+(2.4/5 GHz U.FL)+(GPS-GLN U.FL) RG178 -200mm
-----------	--

## MTX-Antenna Adhesive Blade OPN GSM5-LTE700/2600

### Blade antenna

- Frequency: 698-960/1710-2170/2500-2700 MHz
- Connector: SMA M and other
- Gain: 3 dBi
- Dimensions: 117.4x12.5x6.5 mm



### ORDERING INFORMATION

118016094	MTX-Antenna Adhesive BLADEMID OPN5224 c SMA M - RG174 -250mm
118016098	MTX-Antenna Adhesive BLADEMID OPN5224 GSM5-LTE700/2600 SMA M R/A - RG174 -140mm

## MTX-Antenna Adhesive Blade J17 GSM5+LTE700/2700

### Blade antenna

- Frequency: 700/800/900/1800/1900/2100/2600/2700 MHz
- Connector: SMA M
- Gain: 2 dBi
- Dimensions: 104.6x5 mm



### ORDERING INFORMATION

118006105	MTX-Antenna Adhesive Blade J17 GSM5+LTE700/2700 2dBi SMA M - RG174 - 3m
-----------	---

## MTX-Antenna Adhesive Blade OPN5024 GSM5+LTE700/2600

### Blade antenna

- Frequency: 700/800/900/1800/1900/2100/2600 MHz
- Connector: SMA M
- Gain: 4 dBi
- Dimensions: 116x6.7 mm



### ORDERING INFORMATION

118016169	MTX-Antenna Adhesive BLADE OPN5024 GSM5-LTE700/2600 4dBi SMA M - RG174 -800mm
-----------	---

## MTX-Antenna Wall HGO LTE2600 /2.4GHz

### External antenna

- Frequency: 790-960/1710-1880/1920-2170/2.4-2.7 MHz
- Connector: SMA M
- Gain: 5/5/6/5-6 dBi
- Dimensions: 335x166x144 mm with bracket
- Polarisation: linear vertical



### ORDERING INFORMATION

118012366	MTX-Antenna Omni Dipole Wall HGO 4G/LTE2600MHz+2.4GHz SMA M - 500mm
-----------	---

## MTX-Antenna OMNI-280 LTE700/2600 /2.4GHz

### Omni antenna

- Frequency: 698-960/1710-2700/3400-3800 MHz
- Connector: SMA M
- Gain: 3 dBi
- Dimensions: 154 mm x 51 mm
- Mounted: IP-67, L-mount included, pole/wall, magnetic/velcro/adhesive



### ORDERING INFORMATION

118010112	MTX-Antenna Omni-280 GSM5+LTE700/2700+2.4GHz 3dBi SMA M - RG58 - 1m
-----------	---

## MTX-Antenna OMNI-292 GSM5+LTE700/2700

### Omni antenna

- Frequency: 700/800/900/1800/1900/2100/2600/2700 MHz
- Connector: N F
- Gain: 8 dBi
- Dimensions: 646x71mm



### ORDERING INFORMATION

118010126

MTX-Antenna Omni-292 GSM5+LTE700/2700+2.4GHz 8dBi N F

## MTX-Antenna OMNI-600 410+GSM5+LTE700/2700

### Omni antenna

- Frequency: 700/800/900/1800/1900/2100/2600/2700 MHz
- Connector: SMA M
- Gain: 6.5 dBi
- Dimensions: 700x150x100 mm



### ORDERING INFORMATION

118010125

MTX-Antenna Omni-600 410+GSM5+LTE700/2700+3.8GHz 6.5dBi SMA M - LL195 - 5m

## MTX-Antenna OMNIFIBERGLASS SO GSM5+LTE700/2600

### Omnifiberglass antenna

- Frequency: 700/800/900/1800/1900/2100/2600 MHz
- Connector: N F
- Gain: 4 dBi
- Dimensions: 300 mm



### ORDERING INFORMATION

600005019

MTX-Antenna OmniFIBERGLASS SO GSM5+LTE700/2600MHZ 4dBi N F



## MTX-Antenna FIBERGLASS FGO LTE700/2600

### Omni FIBERGLASS antenna

- Frequency: 690-960/1710-2170/2500-2700 MHz
- Connector: N F
- Gain (peak): 5dBi
- Dimensions: 390x32 mm excluding bracket



#### ORDERING INFORMATION

118012200	MTX-Antenna Omni FIBERGLASS FGO GSM5+LTE2600 5dBi - N F
118012231	MTX-Antenna Omni FIBERGLASS FGO GSM5+LTE2600 5dBi SMA M - LL195 - 5m

## MTX-Antenna Marine OMNI-291 LTE452/2600/2.4GHz

### Marine omni antenna

- Frequency: 450-470/690-960/1710-2700 MHz
- Connector: N F
- Gain: 7 dBi
- Polarization: linear vertical
- Dimensions: 560x75 mm
- Mounted: IP-67, L-mount included, good signal output 70km out at sea



#### ORDERING INFORMATION

118010101	MTX-Antenna Marine Omni-291 GSM5+LTE452/2700+2.4GHz 7dBi
-----------	--

## MTX-Antenna OMNI-121 LTE700/2600

### Marine omni antenna

- Frequency: 690-960/1710-2700 /2500-2700 MHz
- Connector: N F
- Gain: 6 dBi
- Polarization: linear vertical
- Dimensions: 555x50x50 mm
- Mounted: IP-67, L-mount included, good signal output 70km out at sea



#### ORDERING INFORMATION

118010102	MTX-Antenna Omni-121 GSM5+LTE700/2700 6dBi SMA M - LL195 - 8m
-----------	---

## MTX-Antenna PANEL LTE700/2600

### Panel antenna

- Frequency: 690-960/1710-2170/2500-2700 MHz
- Connector: N F
- Gain: 8 dBi
- Polarization: vertical
- Dimensions: 210x180x43 mm



### ORDERING INFORMATION

118009235

MTX-Antenna PANEL BROADBAND GSM5+LTE700/2600 7/8dBi N F

## MTX-Antenna PANEL COMP LTE2600/2.4GHz

### Panel antenna

- Frequency: 790-960/1710-2170/2400-2700 MHz
- Connectors: FME F, other
- Gain M1 – M2: 6/9/8 dBi
- Polarization: linear vertical
- Dimensions: 255x135x46 mm excluding bracket
- Other: supplied with mount bracket



### ORDERING INFORMATION

600005006

MTX-Antenna PANEL COMP GSM5+LTE2600 2.4GHz 6/9/8dBi FME F - RG58 - 5m

600005013

MTX-Antenna PANEL COMP GSM5+LTE2600 2.4GHz 6/9/8dBi SMA M RP - RG58 - 5m

## MTX-Antenna PANEL LPS LTE2600

### Panel antenna

- Frequency: 790-960/1710-2170/2500-2700 MHz
- Connector: N F
- Gain: 9/9/11.5/8.3 dBi
- Polarization: linear-vertical
- Dimensions: 202x202x41 mm excluding bracket
- Other: supplied with mount bracket for wall or pole



### ORDERING INFORMATION

118012357

MTX-Antenna PANEL LPS GSM5+LTE2600 9/11.5/8.3dBi N F

118012330

MTX-Antenna PANEL LPS GSM5+LTE2600 9/11.5/8.3dBi SMA M - BW195 - 5m

118012328

MTX-Antenna PANEL LPS GSM5+LTE2600 9/11.5/8.3dBi SMA M - BW195 - 6m

## MTX-Antenna YAGI GSM5+LTE700/2700-3000

### YAGI antenna

- Frequency: 700/800/900/1800/1900/2100/2600/2700-3000 MHz
- Connector: SMA M
- Gain: 12 dBi
- Dimensions: 1112x200x47 mm



### ORDERING INFORMATION

118010113	MTX-Antenna YAGI GSM5+LTE700/2700-3000 12dBi SMA M - LL195 - 7m
-----------	---

## MTX-Antenna Internal LTE 700/2600

### Internal antenna

- Frequency: 690-960/1710-2170/2500-2700 MHz
- Connector: U.FL/other
- Gain: 1.5 dBi
- Dimensions: 110x21 mm



### ORDERING INFORMATION

118012203	MTX-Antenna Internal GSM5+LTE700/2600 - U.FL - 100mm
118012246	MTX-Antenna Internal GSM5+LTE700/2600 - MMCX R/A - 100mm
118009290	MTX-Antenna Internal GSM5+LTE700/2600 U.FL - 150 mm

## MTX-Antenna Internal FLEX LTE 700/2600

### Internal-flexible antenna

- Frequency: 690-960/1710-2170/2500-2700 MHz
- Connector: U.FL/other
- Gain: 2.6/3.0/2.9 dBi
- Dimensions: 137x33x0.2 mm



### ORDERING INFORMATION

118012243	MTX-Antenna Internal L-FLEX GSM5+LTE2600 U.FL - 100mm
-----------	---

## MTX-Antenna Internal Lucida PCB LTE 700/2600

### Internal-PCB antenna

- Frequency: 698-798/824-960/1710-2170/2300-2400/2500-2690 MHz
- Gain: 1.5/1.5/1.5/2.0/2.0 dBi
- Dimensions: 35x8.5x3.2 mm



### ORDERING INFORMATION

118011031

MTX-Antenna Internal PCB LUCIDA GSM5+LTE700/2700 35X8.5X3.2

## MTX-Antenna Internal Adhesive OPNF0624 GSM5

### Internal adhesive antenna

- Frequency: 800/900/1800/1900/2100 MHz
- Connector: U.FL
- Gain: 3.4 dBi
- Dimensions: 110.4x20.8mm



### ORDERING INFORMATION

118016115

MTX-Antenna Internal Adhesive OPNF0624 GSM5+LTE700/2600 3.4dBi U.FL 1.37 - 100mm

## MTX-Antenna Internal Adhesive OPNF0924 GSM5+LTE700/2700

### Internal adhesive antenna

- Frequency: 700/800/900/1800/1900/2100/2600/2700 MHz
- Connector: U.FL
- Gain: 0-4.5 dBi
- Dimensions: 120x8.9x0.15mm



### ORDERING INFORMATION

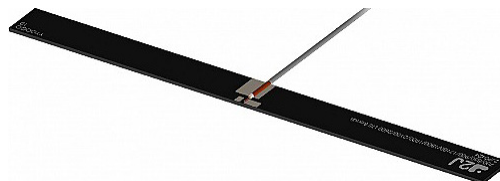
118016164

MTX-Antenna Internal Adhesive OPNF0924 GSM5+LTE700/2700 0-4.5dBi U.FL 1.37 - 100mm

## MTX-Antenna Internal Adhesive OPN0424P GSM5+LTE700/2600

### Internal adhesive antenna

- Frequency:  
700/800/900/1800/1900/2100/2600 MHz
- Connector: U.FL
- Gain: 5.6 dBi
- Dimensions: 113x8.5x0.8 mm



### ORDERING INFORMATION

118016116

MTX-Antenna Internal Adhesive OPNP0424P GSM5+LTE700/2600 5.6dBi U.FL  
1.37 - 100mm

## MTX-Antenna Screwed CMO LTE700/2600 MIMO

### Screwed antenna

- Frequency M1/M2: 690-800/800-960/1710-2170/2500-2700 MHzMHz
- Connectors: SMA M/other
- Gain M1/M2: 1/2.5/3.8/5 dBi - 1/2.5/3.7/5 dBi
- Dimensions: 102x33.5 mm



### ORDERING INFORMATION

118012336	MTX-Antenna Screwed CMO GSM5+LTE700/2600 5dBi MIMO 2xSMA M - RG174 - 1m
<b>118012364</b>	<b>MTX-Antenna Screwed CMO GSM5+LTE700/2600 5dBi MIMO 2xSMA M - RG174 - 2m</b>
118012334	MTX-Antenna Screwed CMO GSM5+LTE700/2600 5dBi MIMO SMA M / FME F - RG174 - 2m
118012335	MTX-Antenna Screwed CMO GSM5+LTE700/2600 5dBi MIMO SMA M RP / FME F - RG174 - 2m

## MTX-Antenna Screwed OPN LTE2600 MIMO

### Screwed antenna

- Frequency: 850/900/1800/1900/2100/2600 MHz
- Connector: 2x SMA M
- Gain: 5 dBi
- Dimensions: 142.5x33.8 mm



### ORDERING INFORMATION

118016051	MTX-Antenna Screwed OPN6524 GSM5+LTE2600 MIMO 5dBi 2xSMA M - RG174 - 3m
-----------	---

## MTX-Antenna Screwed OPN LTE700/2600 MIMO

### Screwed antenna

- Frequency: 699-960/1710-2170/2500-2690 MHz
- Connector: 2x SMA M
- Gain: 3 dBi
- Dimensions: 77.3x65.5 mm



### ORDERING INFORMATION

118016099	MTX-Antenna Screwed OPN6A24 GSM5+LTE700/2600 3.4dBi MIMO 2xFME F - LMR100 - 5m
<b>118016052</b>	<b>MTX-Antenna Screwed OPN6A24 GSM5+LTE700/2600 3.4dBi MIMO 2xSMA M - RG174 - 3m</b>

## MTX-Antenna Screwed GSM5+LTE700/2600

### Screwed antenna

- Frequency: 700/800/900/1800/1900/2100/2600 MHz
- Connector: SMA M
- Gain: 0-4 dBi
- Dimensions: 100x26 mm



### ORDERING INFORMATION

118009301	MTX-Antenna Screwed GSM5+LTE700/2600 0-4dBi MIMO 2xSMA M - RG174 - 5m
-----------	---

## MTX-Antenna Screwed OPN7724 GSM5+LTE700/2600

### Screwed antenna

- Frequency: 700/800/900/1800/1900/2100/2600 MHz
- Connector: SMA M
- Gain: 4 dBi
- Dimensions: Ø60x69 mm



### ORDERING INFORMATION

118016157	MTX-Antenna screwed OPN7724 GSM5-LTE700/2600 4dBi MIMO 2xSMA M - LL100 - 2m
118016156	MTX-Antenna Magnetic OPN7724 GSM5+LTE700/2700 3.5dBi MIMO 2xSMA M - LL100 - 2m

## MTX-Antenna Screwed OPN6024 GSM5+LTE700/2700

### Screwed antenna

- Frequency: 700/800/900/1800/1900/2100/2600/2700 MHz
- Connector: SMA M
- Average gain: 4 dBi
- Dimensions: 80x74x14.7 mm



### ORDERING INFORMATION

118016175	MTX-Antenna screwed OPN6024 GSM5+LTE700/2700 4dBi MIMO 2xSMA M - 2m
-----------	---

## MTX-Antenna Screwed J03 GSM5+LTE700/2600 MIMO

### Screwed antenna

- Frequency: 700/800/900/1800/1900/2100/2600 MHz
- Connector: SMA M
- Average gain: 2.5 dBi
- Dimensions: 46.6x16.3 mm



### ORDERING INFORMATION

118006117	MTX-Antenna Screwed J03 GSM5+LTE700/2600 MIMO 2.5dBi 2xSMA M - RG174 - 3m
118006112	MTX-Antenna Screwed J03 GSM5+LTE700/2600 MIMO 2.5dBi 2xSMA M -Coax1.37 - 200mm

## MTX-Antenna Screwed MIMO-3 433+GSM5+LTE690/2700+2.4/5GHz+GPS

### Screwed antenna

- Frequency: 433/690/800/900/1800/1900/2100/2600/2700 MHz, 2.4/5 GHz
- Connector: SMA M
- Gain: 5.8-21 dBi
- Dimensions: 253x128x144 mm



### ORDERING INFORMATION

118010118	MTX-Antenna Screwed MIMO-3 433MHz+GSM5+LTE690/2700+2.4/5GHz+ GPS SMA M - 2m
-----------	---

## MTX-Antenna Screwed OPN7050 GSM5+LTE700/2700+2.4/5GHz+GPS-GLN

### Screwed antenna

- Frequency: 700/800/900/1800/1900/2100/2600/2700 MHz, 2.4/5 GHz
- Connector: FME F, SMA M, SMA M RP
- Average gain: ~-3.3 - ~2.4 dBi
- Dimensions: Ø96x90 mm



### ORDERING INFORMATION

118016100	MTX-Antenna Screwed OPN7050 (GSM5+LTE700/2700 MIMO FME F)+(GPS-GLN SMA M)+(2.4/5MHz x2 SMA M RP) 5m
118016129	MTX-Antenna Screwed OPN7050 (GSM5+LTE700/2700 MIMO SMA M)+(GPS-GLN FME F)+(2.4/5MHz x2 SMA M RP) 3m



## MTX-Antenna Screwed OPN7741 GSM+LTE700/2700 MIMO+GPS-GLN

### Screwed antenna

- Frequency: 700/800/900/1800/1900/2100/2600/2700 MHz
- Connector: U.FL
- Average gain: -4.3~-2.6 dBi
- Dimensions: 69x60 mm



### ORDERING INFORMATION

118016171	MTX-Antenna Screwed OPN7741 (GSM5+LTE700/2700 MIMO U.FL)+(GPS-GLN U.FL) RG178 -150mm
118016167	MTX-Antenna Screwed OPN7741 (GSM5+LTE700/2700 MIMO U.FL)+(GPS-GLN U.FL) RG178 -200mm

## MTX-Antenna Adhesive Blade FLMB GSM5+LTE700/2700

### Blade antenna

- Frequency: 700/800/900/1800/1900/2100/2600/2700 MHz
- Connector: SMA M
- Gain: 2.5 dBi
- Dimensions: 181x80 mm



### ORDERING INFORMATION

118012371	MTX-Antenna Adhesive Blade FLMB GSM5+LTE700/2700 2.5dBi MIMO 2xSMA M - RG174 - 50mm
-----------	---

## MTX-Antenna Magnetic OPN6024 GSM5+LTE700/2700

### External antenna

- Frequency: 700/800/900/1800/1900/2100/2600/2700 MHz
- Connector: SMA M
- Gain: 4 dBi
- Dimensions: 80x76x13 mm



### ORDERING INFORMATION

118016146	MTX-Antenna Magnetic OPN6024 GSM5+LTE700/2700 4dBi MIMO 2xSMA M - D302 - 3m
-----------	---

## MTX-Antenna Magnetic OPN7741 GSM5+LTE700/2700+GPS

### External antenna

- Frequency: 700/800/900/1800/1900/2100/2600/2700 MHz
- Connector: Fakra D Jack-F, Fakra C Jack-F
- Gain: ~1.8, ~3.1, ~2.9 dBi
- Dimensions: 54x68.2 mm



### ORDERING INFORMATION

118016173	MTX-Antenna Magnetic OPN7741 (GSM5+LTE700/2700 MIMO Fakra D Jack-F)+(GPS Fakra C Jack-F)-LL100-3m
-----------	---

## MTX-Antenna Omni LMO LTE700/2600 MIMO

### Screwed antenna

- Frequency: 690-800/800-960/1710-2170/2500-2700 MHz
- Connector: 2x SMA M
- Gain M1 – M2: 1.4/2.0/3.0/3.3 dBi - 2.8/3.0/3.9/3.9 dBi
- Polarisation: dual polarised
- Dimensions: 187x106 mm excluding bracket



### ORDERING INFORMATION

118012221	MTX-Antenna Omni GSM5+LTE700/2600 MIMO 2xSMA M - Pigtaills - 150mm
118012215	MTX-Antenna Omni GSM5+LTE700/2600 MIMO 2xSMA M + Cables RF195 - 10m
118012216	MTX-Antenna Omni GSM5+LTE700/2600 MIMO 2xSMA M + Cables RF195 - 20m
118012227	MTX-Antenna Omni GSM5+LTE700/2600 MIMO 2xSMA M + Cables RF195 - 5m

## MTX-Antenna Omni Marine-402 GSM5+LTE452/2700 MIMO

### External antenna

- Frequency: 452/800/900/1800/1900/2100/2600/2700 MHz
- Connector: SMA M
- Gain: 6.2 dBi
- Dimensions: 704x147x100 mm



### ORDERING INFORMATION

118010120

MTX-Antenna Omni Marine-402 GSM5+LTE452/2700 MIMO 6.2dBi 2x SMA M - LL195 - 2m

## MTX-Antenna PANEL LPM LTE2600 MIMO

### Panel antenna

- Frequency M1-M2: 790-960/1710-2170/2500-2700 MHz
- Connectors: N F
- Gain M1 – M2: 9/8/8 dBi
- Polarization: dual polarised, 1 vertical, 1 horizontal
- Dimensions: 200x200x40 mm excluding bracket
- Other: supplied with mount bracket for wall or pole



### ORDERING INFORMATION

118012365

MTX-Antenna PANEL LPM GSM5+LTE2600 MIMO 2x SMA M - RF195 - 10m

118012212

MTX-Antenna PANEL LPM GSM5+LTE2600 MIMO N F + N F

## MTX-Antenna PANEL XPOL LTE2700

### Panel antenna

- Frequency: 790-960/1710-2700 MHz
- Connector: SMA M
- Gain: 4 dBi
- Polarization: +45° and -45°
- Dimensions: 215x135x85 mm
- Mounq: includes wall/pole/window mounting



### ORDERING INFORMATION

118010104

MTX-Antenna PANEL XPOL1 GSM5+LTE2700 MIMO 2x SMA M - LL195 - 5m

## MTX-Antenna PANEL XPOL LTE700/2600 + 2.4GHz

### Panel antenna

- Frequency: 698-2700 MHz
- Connector: SMA M
- Gain: 9 dBi
- Polarization: vertical and horizontal
- Dimensions: 255x255x80 mm
- Mount: includes wall/pole mounting, IP65



### ORDERING INFORMATION

118010105

MTX-Antenna PANEL XPOL2 GSM5+LTE700/2700+2,4GHz 9dBi MIMO 2x SMA M - LL195 - 5m

## MTX-Antenna Screwed CLO GSM5+LTE700/2600+5G3500

### Screwed antenna

- Frequency: 700/800/900/1800/1900/2100/2600/3500 MHz
- Connector: SMA M R/A
- Gain: ? dBi
- Dimensions: ? mm

### ORDERING INFORMATION

118012409

MTX-Antenna Screwed CLO GSM5+LTE700/2600+5G3500 SMA M R/A - RG174 - 2m

## MTX-Antenna Screwed PUCK GSM5+LTE700/2600+5G

### Screwed antenna

- Frequency: 700/800/900/1800/1900/2100/2600/3500 MHz
- Connector: SMA M
- Gain: 6 dBi
- Dimensions: 100x36 mm



### ORDERING INFORMATION

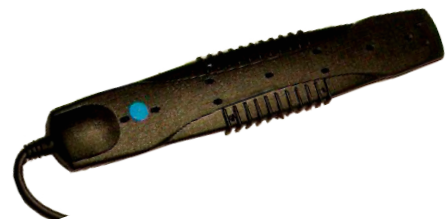
118010123

MTX-Antenna Screwed PUCK GSM5+LTE700/2600+5G 6dBi SMA M - RG174 - 2m

## MTX-Antenna Adhesive BLADE GSM5+LTE600/2700+5G

### Adhesive antenna

- Frequency: 600/800/900/1800/1900/2100/2600/2700/3500 MHz
- Connector: SMA M
- Gain: 2.5 dBi
- Dimensions: 47.7x22.8 mm



### ORDERING INFORMATION

118009320

MTX-Antenna Adhesive BLADE GSM5+LTE600/2700+5G 2.5dBi SMA M - RG174 - 3m

## MTX-Antenna Screwed PUCK GSM5+LTE700/2600+5G+2.4/5GHz+GPS

### Screwed antenna

- Frequency: 700/800/900/1800/1900/2100/2600/3500 MHz, 2.4/5 GHz
- Connector: SMA M
- Gain: 6 dBi
- Dimensions: 100x36 mm



### ORDERING INFORMATION

118010119	MTX-Antenna Screwed PUCK (GSM5+LTE700/2600+5G MIMO)(2.4/5MHz MIMO)(GPS-Glonass) 5xSMA M -2m
118010122	MTX-Antenna Screwed PUCK (GSM5+LTE700/2600+5G 6dBi MIMO)(GPS-Glonass) 3xSMA M -2m
118010130	MTX-Antenna Screwed PUCK (GSM5+LTE700/2600+5G MIMO)6dBi(2.4/5GHz) 3xSMA M -2m
118010117	MTX-Antenna Screwed PUCK GSM5+LTE700/2600+5G 6dBi MIMO 2xSMA M - RG174 - 2m

## MTX-Antenna OMNI XPOL1 GSM5+LTE700/2700+5G

### Omni antenna

- Frequency: 700/800/900/1800/1900/2100/2600/2700/3500 MHz
- Connector: SMA M
- Gain: 3 dBi
- Dimensions: 247x157x88 mm



### ORDERING INFORMATION

118010129	MTX-Antenna OMNI XPOL1 GSM5+LTE700/2700+5G 3dBi MIMO 2xSMA M - LL195 -5m
-----------	--

## MTX-Antenna PANEL XPOL2 GSM5+LTE700/2700+5G

### Panel antenna

- Frequency: 700/800/900/1800/1900/2100/2600/2700/3500 MHz
- Connector: SMA M
- Gain: 9 dBi
- Dimensions: 290x265x155 mm



### ORDERING INFORMATION

118010124

MTX-Antenna PANEL XPOL2 GSM5+LTE700/2700+5G 9dBi MIMO 2xSMA M - LL195 - 5m

## MTX-Antenna STUBBY BT 2.4GHz

### Stub antenna

- Frequency: 2.4-2.5 GHz
- Connector: SMA M
- Gain: 0 dBi
- Dimensions: 36x17.5 mm (max.)



### ORDERING INFORMATION

<b>118012018</b>	<b>MTX-Antenna STUBBY BT 2.4GHz SMA M</b>
118012019	MTX-Antenna STUBBY BT 2.4GHz SMA M R/A
<b>118012095</b>	<b>MTX-Antenna STUBBY BT 2.4GHz SMA M RP</b>
<b>118012106</b>	<b>MTX-Antenna STUBBY BT 2.4GHz SMA M RP R/A</b>

## MTX-Antenna STUBDUCK SW 2.4/5.8 GHz

### Stub antenna

- Frequency: 2.4-5.8 GHz
- Connector: SMA M RP
- Gain: 3/5 dBi
- Dimensions: 115X15X18 mm



### ORDERING INFORMATION

<b>118009135</b>	<b>MTX-Antenna STUBDUCKSW 2.4/5.8GHz 3/5dBi SMA M RP</b>
118009055	MTX-Antenna STUBDUCKSW 2.4/5.8GHz 3/5dbi SMA M RP+MagneticBase SMA M RP-RG174 - 2m
118009280	MTX-Antenna STUBDUCKSW 2.4/5.8GHz 3/5dbi SMA M RP + MagneticBase SMA M - RG174 - 2m

## MTX-Antenna STUBFLATSW BTR 2.4/5GHz

### Stub antenna

- Frequency: 2400-2500/4900-6000 MHz
- Connector: SMA M
- Gain: 2 dBi
- Dimensions 99.5x11 mm (max.)



### ORDERING INFORMATION

118012230	MTX-Antenna STUBFLATSW 2.4/5GHz 2dBi SMA M
118012241	MTX-Antenna STUBFLATSW 2.4/5GHz 2dBi SMA M RP



## MTX Antenna STUBSW 2.4GHz 2dBi

### Stub antenna

- Frequency: 2.4 GHz
- Connector: SMA M/SMA M RP
- Gain: 2 dBi
- Dimensions: 108x9.3 mm



### ORDERING INFORMATION

118009256	MTX-Antenna STUBSW 2.4GHz 2dbi SMA M
<b>118009250</b>	<b>MTX-Antenna STUBSW 2.4GHz 2dbi SMA M RP</b>

## MTX Antenna STUBSW 2.4GHz 5dBi

### Stub antenna

- Frequency: 2.4 GHz
- Connector: SMA M RP
- Gain: 5 dBi
- Dimensions: 190x12.7 mm



### ORDERING INFORMATION

<b>118009238</b>	MTX-Antenna STUBSW 2.4GHz 5dbi SMA M RP
<b>118009239</b>	<b>MTX-Antenna STUBSW 2.4GHz 5dbi SMA M RP + MagneticBase SMA M RP - RG174 - 2m</b>
118007025	MTX-Antenna STUBSW 2.4GHz SMA M RP

## MTX-Antenna STUBSW 2.4GHz 7dBi + MagneticBase

### Stub antenna

- Frequency: 2.4 GHz
- Connector: SMA M RP
- Gain: 7 dBi
- Dimensions: 245 mm
- Base connector: SMA F RP
- Base cable: SMA M RP - RG174U -2m



### ORDERING INFORMATION

118009094	MTX-Antenna STUBSW 2.4GHz 7dbi SMA M RP + MagneticBase SMA M RP - RG174 - 2m
-----------	--

## MTX-Antenna STUBSW 2.4GHz 9dBi + MagneticBase

### Stub antenna

- Frequency: 2.4 GHz
- Connector: SMA M RP
- Gain: 9 dBi
- Dimensions: 380 mm
- Base connector: SMA F RP
- Base cable: SMA M RP - RG174U -3m



### ORDERING INFORMATION

118009276	MTX-Antenna STUBSW 2.4GHz 9dbi SMA M RP
<b>118009095</b>	<b>MTX-Antenna STUBSW 2.4GHz 9dbi SMA M RP + MagneticBase SMA M RP - RG174 - 2m</b>

## MTX-Antenna STUBSW BKR 2.4GHz 2dBi

### Stub antenna

- Frequency: 2.4-2.5 GHz
- Connector: SMA M RP
- Gain: 2 dBi
- Dimensions: 139x13 mm (max.)



### ORDERING INFORMATION

118012108	MTX-Antenna STUBSW BKR2400 2.4GHz 2dbi SMA M
118012132	MTX-Antenna STUBSW BKR2400 2.4GHz 2dbi SMA M RP

## MTX-Antenna STUBSW 2.4/5GHz

### Stub antenna

- Frequency: 2.4/5 GHz
- Connector: SMA M RP
- Gain: 1.4/3.2 dBi
- Dimensions: 139x13 mm (max.)



### ORDERING INFORMATION

118016096	MTX-Antenna STUBSW OPNW035 2.4/5GHz 1.4/3.2dbi SMA M RP
-----------	---

## MTX-Antenna STUB Screwed WCO 2.4GHz

### Stub antenna

- Frequency: 2.4 GHz
- Connector: SMA M RP - N M
- Gain: 2.5 dBi
- Dimensions: 116 mm



### ORDERING INFORMATION

118012367

MTX-Antenna STUB Screwed WCO 2.4GHz 2.5dbi N F+ SMA M RP - N M - RF195 - 5m

## MTX-Antenna Magnetic STUB 2.4GHz 2dBi

### Magnetic antenna

- Frequency: 2.4-2.5 GHz
- Connector: SMA M RP
- Gain: 2.0 dBi
- Dimensions: 87x27 mm



### ORDERING INFORMATION

118012229

MTX-Antenna Magnetic STUB 2.4GHz 2dbi SMA M RP - RG174 - 2m

## MTX-Antenna Magnetic STUB L10 2.4GHz 2dBi

### Magnetic antenna

- Frequency: 2.4-2.5 GHz
- Connector: SMA M RP
- Gain: 2.0 dBi
- Dimensions: 100x34 mm



### ORDERING INFORMATION

118007023

MTX-Antenna Magnetic STUB L10 2.4GHz 2dbi SMA M - RG174 - 2m

**118007031**

**MTX-Antenna Magnetic STUB L10 2.4GHz 2dbi SMA M RP - RG174 - 3m**

118007041

MTX-Antenna Magnetic STUB L10 2.4GHz 2dbi SMA M RP R/A - RG174 - 3m

## MTX-Antenna Magnetic STUB OPN3702 L7 2.4GHz

### Magnetic antenna

- Frequency: 2.4 GHz
- Connector: SMA M RP R/A
- Gain: 2 dBi
- Dimensions: Ø31x71.5 mm



### ORDERING INFORMATION

118016152

MTX-Antenna Magnetic STUB OPN3702 L7 2.4GHz 2dbi SMA M RP R/A - RG174 - 3m

## MTX-Antenna Screwed CPW 2.4/5GHz

### Screwed antenna

- Frequency: 2.4-2.5/4.9-5.8 GHz
- Connector: SMA M
- Gain: 2/3 dBi
- Dimensions: 102x33.5 mm



### ORDERING INFORMATION

118012333

MTX-Antenna Screwed CPW 2.4/5GHz 2/3dbi SMA M - RG174 - 5m

118012130

MTX-Antenna Screwed CPW 2.4/5GHz 2/3dbi SMA M RP - RG174 - 2m

## MTX-Antenna Screwed CPW 2.4/5GHz MIMO

### Screwed antenna

- Frequency: 2.4-2.5/4.9-5.8 GHz
- Connector: SMA M
- Gain: 2/3 dBi
- Dimensions: 102 x 33.5mm



### ORDERING INFORMATION

118012540

MTX-Antenna Screwed CPW Mimo 2.4/5GHz 2xSMA M RP - RG174 - 1m

118012372

MTX-Antenna Screwed CPW Mimo 2.4/5GHz 2xSMA M RP - RG174 - 2m

118012373

MTX-Antenna Screwed CPW Mimo 2.4/5GHz 2xSMA M RP R/A - RG174 - 2m

## MTX-Antenna Screwed ESFERA 2.4/5.2GHz

### Screwed antenna

- Frequency: 2.4/5.2 GHz
- Connector: SMA M
- Gain: 2/3 dBi
- Dimensions: 53x23 mm



### ORDERING INFORMATION

118009197	MTX-Antenna Screwed ESFERA 2.4/5.2GHz SMA M R/A - RG174 - 2m
118009161	MTX-Antenna Screwed ESFERA 2.4/5.2GHz SMA M RP - RG174 - 2m

## MTX-Antenna Screwed M66 2.4GHz

### Screwed antenna

- Frequency: 2.4 GHz
- Connector: SMA M
- Gain: 0 dBi
- Dimensions: 53x75 mm



### ORDERING INFORMATION

118009082	MTX-Antenna Screwed M66 2.4GHz SMA F RP - RG316 - 5m
118009124	MTX-Antenna Screwed M66 2.4GHz SMA M - RG316 - 5m
118009084	MTX-Antenna Screwed M66 2.4GHz SMA M RP - RG316 - 5m

## MTX-Antenna Screwed OPN 2.4/5GHz

### Screwed antenna

- Frequency: 2.4/5.1-5.9 GHz
- Connector: SMA M RP
- Gain: 5.0 dBi
- Dimensions: 73x15.9 mm
- Protección: IP67



### ORDERING INFORMATION

118016084	MTX-Antenna Screwed OPN662 2.4/5GHz 5dbi SMA M RP - R174 - 5m
118016090	MTX-Antenna Screwed OPN662 2.4/5GHz 5dbi SMA M RP - R174 - 1,5m

## MTX-Antenna Screwed OPN 2.4GHz Antenna

### Screwed antenna

- Frequency: 2.4GHz
- Connector: SMA M
- Gain: 2.5 dBi
- Dimensions: 60x15.5 mm
- Protección: IP67



### ORDERING INFORMATION

118016057

MTX-Antenna Screwed OPN7402 2.4GHz 2.5dBi SMA M - R174 - 5m

## MTX-Antenna Screwed ROOFBALL 2.4GHz

### Screwed antenna

- Frequency: 2.4 GHz
- Connector: SMA M
- Gain: 0 dBi
- Dimensions: 53x30x30 mm



### ORDERING INFORMATION

118009101

MTX-Antenna Screwed ROOFBALL 2.4GHz SMA M - RG174 - 4m

**118009155**

**MTX-Antenna Screwed ROOFBALL 2.4GHz SMA M RP - RG174 - 4m**

## MTX-Antenna Screwed Stub OPN 2.4GHz

### Wall mount antenna

- Frequency: 2.4 GHz
- Connector: SMA M
- Gain: 5 dBi
- Dimensions: 184X16 mm



### ORDERING INFORMATION

118016086

MTX-Antenna STUB Screwed Wall OPN230 2.4/5GHz 3.3/5.8dbi SMA M RP - LMR195 - 5m

## MTX-Antenna Screwed OPN6A02Ba Mimo 2.4/5GHz

### Screwed antenna

- Frequency: 2.4/5 GHz
- Connector: SMA M RP R/A
- Gain: ~2.6, ~4.4 dBi
- Dimensions: Ø77.3×65.5 mm



### ORDERING INFORMATION

118016108

MTX-Antenna Screwed OPN6A02Ba Mimo 2.4/5GHz 2xSMA M RP R/A- LMR100 - 2m

## MTX-Antenna Screwed OPN662 2.4/5GHz

### Screwed antenna

- Frequency: 2.4/5 GHz
- Connector: SMA M RP
- Gain: 5 dBi
- Dimensions: Ø77.3×15 mm



### ORDERING INFORMATION

118016136

MTX-Antenna Screwed OPN662 2.4/5GHz 5dbi SMA M RP - R174 - 1m

## MTX-Antenna Screwed ROOFBALL 2.4GHz

### Screwed antenna

- Frequency: 2.4 GHz
- Connector: U.FL
- Gain: 2 dBi
- Dimensions: 30x21 mm



### ORDERING INFORMATION

118009310

MTX-Antenna Screwed ROOFBALL 2.4GHz U.FL 1.37 - 50mm

## MTX-Antenna Magnetic OPN6302 2.4/5GHz

### Magnetic antenna

- Frequency: 2.4/5 GHz
- Connector: SMA M
- Gain: 2/5 dBi
- Dimensions: Ø52.5×14.3 mm



### ORDERING INFORMATION

118016082

MTX-Antenna Magnetic OPN6302 2.4/5GHz 2/5dBi SMA M - RG174 - 2m

## MTX-Antenna Adhesive BLADE 2.4GHz

### Adhesive antenna

- Frequency: 2.4 GHz
- Connector: SMA M
- Gain: 0 dBi
- Dimensions: 115X22 mm



### ORDERING INFORMATION

118007022

MTX-Antenna Adhesive BLADE 2.4GHz FAKRA I Jack-F - RG174 - 2m

## MTX-Antenna Adhesive OPN6002 Mimo 2.4/5GHz

### Adhesive antenna

- Frequency: 2.4/5 GHz
- Connector: SMA M RP
- Gain: -2.1~-3.9 dBi
- Dimensions: 80x76x16 mm



### ORDERING INFORMATION

118016130

MTX-Antenna Adhesive OPN6002 Mimo 2.4/5GHz 2xSMA M RP - LMR100 - 3m



## MTX-Antenna Adhesive BLADEMID 2.4/5GHz

### Adhesive antenna

- Frequency: 2.4/5 GHz
- Connector: SMA M, SMA M RP
- Gain: 2.5 dBi
- Dimensions: 108x18 mm



### ORDERING INFORMATION

118009279	MTX-Antenna Adhesive BLADEMID 2.4/5GHz SMA M - RG174 - 3m
118009324	MTX-Antenna Adhesive BLADEMID 2.4/5GHz SMA M RP - RG174 - 1m

## MTX-Antenna Adhesive OPN6302 2.4/5GHz

### Adhesive antenna

- Frequency: 2.4/5 GHz
- Connector: SMA M
- Gain: 2/5 dBi
- Dimensions: Ø52.5x14.3 mm



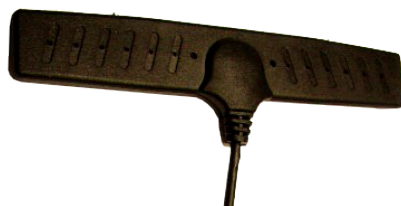
### ORDERING INFORMATION

118016083	MTX-Antenna Adhesive OPN6302 2.4/5GHz 2/5dBi SMA M - RG174 - 300mm
-----------	--

## MTX-Antenna BLADEMID 2.4/5GHz

### Adhesive antenna

- Frequency: 2.4/5 GHz
- Connector: SMA M RP
- Gain: 2.5 dBi
- Dimensions: 110X18 mm



### ORDERING INFORMATION

118009232	MTX-Antenna Adhesive BLADEMID 2.4/5GHz SMA M RP - RG174 - 3m
-----------	--

## MTX-Antenna FIBERGLASS 2.4GHz

### Omni FIBERGLASS antenna

- Frequency: 2.4-2.5 GHz
- Connector: N F
- Gain: 15 dBi
- Dimensions: 1485x68 mm



#### ORDERING INFORMATION

118009165

MTX-Antenna Omni FIBERGLASS 2.4GHz 15dbi N F

## MTX-Antenna PANEL 2.4GHz 15 dBi

### Panel antenna

- Frequency: 2.4-2.5 GHz
- Connector: N F
- Gain: 15 dBi
- Dimensions: 230x230x20 mm



#### ORDERING INFORMATION

118009265

MTX-Antenna PANEL 2.4GHz N F 15 dBi

## MTX-Antenna PANEL 2.4GHz 13 dBi

### Panel antenna

- Frequency: 2.4-2.5 GHz
- Connector: N F
- Gain: 13 dBi
- Dimensions: 170x145x22 mm



#### ORDERING INFORMATION

118009087

MTX-Antenna PANEL 2.4GHz N F 13 dbi

118009163

MTX-Antenna PANEL 2.4GHz N F 13 dbi [Black]

## MTX-Antenna PANEL COMP GSM5+LTE2600 2.4GHz

### Panel antenna

- Frequency: 790-960/1710-2170/2400-2700 MHz
- Connectors: FME F, other
- Gain M1 – M2: 6/9/8 dBi
- Polarization: linear vertical
- Dimensions: 255x135x46 mm excluding bracket
- Other: supplied with mount bracket



### ORDERING INFORMATION

600005006

MTX-Antenna PANEL COMP GSM5+LTE2600 2.4GHz FME F - 5m

## MTX-Antenna PANEL OPN 2.4GHz

### Panel antenna

- Frequency: 2.4GHz
- Connector: N F
- Gain: 12 dBi
- Dimensions: 104x104x90 mm



### ORDERING INFORMATION

118016003

MTX-Antenna PANEL OPNWIFI12 2.4GHz N F

## MTX-Antenna PANEL 2.4/5GHz

### Panel antenna

- Frequency: 2.4/5GHz
- Connector: SMA F
- Gain: 18 dBi
- Dimensions: 1473.5x26 mm



### ORDERING INFORMATION

118010128

MTX-Antenna PANEL 2.4/5GHz 18dBi SMA F

## MTX-Antenna MINES - TUNNEL HELI-3 2.4/2.5GHz

### TUNNEL directional antenna

- Frequency: 2.4/2.5GHz
- Connectors: N F
- Gain: 17.5 dBi
- Polarization: circular
- Dimensions: 1050x150x120 mm



### ORDERING INFORMATION

118010107

MTX-Antenna TUNNEL HELI-3 2.4/2.5GHz 17.5dBi N F

## MTX-Antenna TUNNEL HELI-4 2.4/2.5GHz

### TUNNEL directional antenna

- Frequency: 2.4/2.5GHz
- Connectors: N F
- Gain: 15 dBi
- Polarization: circular
- Dimensions: 405x110x130 mm



### ORDERING INFORMATION

118010108

MTX-Antenna TUNNEL HELI-4 2.4/2.5GHz 15dBi N F

## MTX-Antenna TUNNEL HELI-8 2.4/2.5GHz

### TUNNEL bidirectional antenna

- Frequency: 2.4/2.5GHz
- Connectors: N F
- Gain: 14 dBi
- Dimensions: 2050x104x140 mm



### ORDERING INFORMATION

118010109

MTX-Antenna TUNNEL Bidireccional HELI-8 2.4/2.5GHz 14dBi N F

## MTX-Antenna TUNNEL HELI-19 2.4/2.5GHz

### TUNNEL antenna

- Frequency: 2.4/2.5GHz
- Connectors: N F
- Gain: 9/11 dBi
- Dimensions: 603x142x114 mm



### ORDERING INFORMATION

118010121	MTX-Antenna TUNNEL HELI-19 2.4/5GHz 9/11dBi N F
-----------	---

## MTX-Antenna Internal ACARA 2.4/5.2GHz

### Internal antenna

- Frequency: 2.4/5.2 GHz
- Connector: U.FL/other
- Gain: 2.2 dBi
- Dimensions: 66x16 mm



### ORDERING INFORMATION

118012370	MTX-Antenna Internal ACARA 2.4/5.2GHz MHF4 - 580mm
118012034	MTX-Antenna Internal ACARA 2.4/5.2GHz U.FL - 100mm
118012030	MTX-Antenna Internal ACARA 2.4/5.2GHz U.FL - 140mm
118012031	MTX-Antenna Internal ACARA 2.4/5.2GHz U.FL - 280mm
118012193	MTX-Antenna Internal ACARA 2.4/5.2GHz U.FL - 580mm
118012233	MTX-Antenna Internal ACARA 2.4/5.2GHz U.FL - 900mm
118012387	MTX-Antenna Internal ACARA 2.4/5.2GHz U.FL - 150mm

## MTX-Antenna Internal OPN 2.4/5.2GHz

### Internal antenna

- Frequency: 2.4/5.2 GHz
- Connector: U.FL/other
- Gain: 1,2/0.8 dBi
- Dimensions: 39.6x8.4x0.1 mm



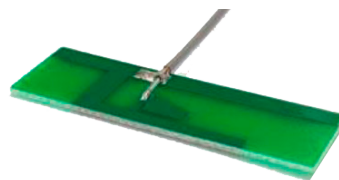
### ORDERING INFORMATION

<b>118016106</b>	<b>MTX-Antenna Internal OPNF0102 2.4/5GHz Bottom U.FL - 150mm</b>
118016064	MTX-Antenna Internal OPNF0102 2.4/5GHz U.FL - 150 mm
118016103	MTX-Antenna Internal OPNF0102P 2.4/5GHz U.FL - 580 mm
118016065	MTX-Antenna Internal OPNMA05c 2.4/5GHz U.FL - 150 mm

## MTX-Antenna Internal 2.4/5.2GHz

### Internal antenna

- Frequency: 2.4/5.2 GHz
- Connector: U.FL/other
- Gain: 3 dBi
- Dimensions: 13.3x42x1.75 mm



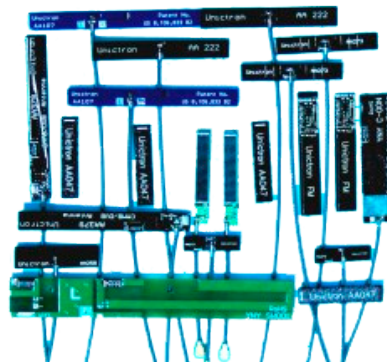
### ORDERING INFORMATION

118016065	MTX-Antenna Internal OPNMA05c 2.4/5GHz U.FL - 150 mm
-----------	--

## MTX-Antenna Internal Ceramic 2.4/5GHz

### Internal antenna

- Frequency: 2.4/5 GHz
- Connector: U.FL/other



### ORDERING INFORMATION

118017019	MTX-Antenna Internal Ceramic CHIP 2.4GHz 2.5dbi 3.2x1.6x0.5mm
118017020	MTX-Antenna Internal Ceramic CHIP 2.4GHz 2.6dbi 3.2x1.6x0.5mm
118017014	MTX-Antenna Internal PCB 2.4/5GHz 40x6x0.5mm U.FL - 100mm
118017013	MTX-Antenna Internal PCB 2.4GHz 50x5x0.5mm U.FL - 100mm

## MTX-Antenna Internal PCB COMATA 2.4GHz

### PCB-SMD antenna

- Frequency: 2.4 GHz
- Connector: SMD mounting
- Gain: 3.5 dBi
- Dimensions: 12.8x3.6x3.3 mm



### ORDERING INFORMATION

QUITAR	MTX-Antenna Internal PCB Comata 2.4GHz
--------	--

## MTX-Antenna Internal PCB MUTICA 2.4/5GHz

### PCB-SMD antenna

- Frequency: 2.4/5 GHz
- Connector: SMD Mounting
- Gain: 0.5/2.5 dBi
- Dimensions: 11.3x5.0x0.8 mm



### ORDERING INFORMATION

118011032	MTX-Antenna Internal PCB MUTICA 2.4-5 GHz 11.3x5x0.8mm (SR42W001)
-----------	---

## MTX-Antenna Internal PCB RUFA 2.4GHz

### PCB-SMD antenna

- Frequency: 2.4-2.5 GHz
- Connector: SMD Mounting
- Gain: 1.2 dBi
- Dimensions: 12.8x3.9x1.1 mm



### ORDERING INFORMATION

QUITAR	MTX-Antenna Internal PCB Rufa left 2.4GHz
QUITAR	MTX-Antenna Internal PCB Rufa right 2.4GHz

## MTX-Antenna Internal MIXTUS 2.4/5.2GHz

### Internal antenna

- Frequency: 2.4/5.2 GHz
- Gain: 0.5/2.3 dBi
- Dimensions: 10x10x0.9 mm



### ORDERING INFORMATION

QUITAR

MTX-Antenna Internal PCB SMD MIXTUS 2.4/5GHz



## MTX-Antenna Screwed OPN6A02Ba Mimo 2.4/5GHz

### Screwed antenna

- Frequency: 800/900/1800/2100/2600/3500 MHz, 2.4/5 GHz
- Connector: SMA M RP R/A
- Gain: ~2.6, ~4.4 dBi
- Dimensions: Ø77.3×65.5 mm



### ORDERING INFORMATION

118016108

MTX-Antenna Screwed OPN6A02Ba Mimo 2.4/5GHz 2xSMA M RP R/A- LMR100 - 2m

## MTX-Antenna Adhesive OPN6002 Mimo 2.4/5GHz

### Adhesive antenna

- Frequency: 800/900/1800/2100/2600/3500 MHz, 2.4/5 GHz
- Connector: SMA M RP
- Gain: -2.1~-3.9 dBi
- Dimensions: 80x76x16 mm



### ORDERING INFORMATION

118016130

MTX-Antenna Adhesive OPN6002 Mimo 2.4/5GHz 2xSMA M RP - LMR100 - 3m

## MTX-Antenna STUB Active GPS

### Stub antenna

- Frequency: 1575.42 MHz (GPS)
- Connector: SMA M
- LNA Gain: 18 dBi
- Voltage: 1.5-3V
- Dimensions: 9.3x57 mm
- Omnidireccional: for the interior of vehicles



### ORDERING INFORMATION

118013005	MTX-Antenna STUB GPS Active SMA M
<b>118013001</b>	<b>MTX-Antenna STUB GPS Active SMA M R/A</b>

## MTX-Antenna STUB Pasive GPS/Glonass

### Stub antenna

- Frequency: 1575.42/1620 MHz (GPS/Glonass)
- Connector: SMA M
- Gain: 1.5 dBi
- Dimensions: 7.8x40 mm



### ORDERING INFORMATION

118013004	MTX-Antenna STUB GPS/GNSS Passive SMA M R/A
-----------	---

## MTX-Antenna STUBBY GPS

### Stub antenna

- Frequency: 1575.42 MHz (GPS)
- Connector: SMA M
- LNA Gain: 26 dBi
- Voltage: 3V
- Dimensions: 18x67 mm
- Omnidireccional: for terminals



### ORDERING INFORMATION

118012165	MTX-Antenna STUBBY GPS SMA M 26dB 3Vcc
118012164	MTX-Antenna STUBBY GPS SMA M R/A 26dB 3Vcc

## MTX-Antenna Magnetic GPS

### Magnetic antenna

- Frequency: 1575.42 MHz (GPS)
- Connector: SMA M/other
- LNA Gain: 27 dBi
- Voltage: 3-5V
- Dimensions: 38x34x12 mm



### ORDERING INFORMATION

<b>118009022</b>	<b>MTX-Antenna Magnetic GPS MCX M - RG174 - 5m</b>
118009010	MTX-Antenna Magnetic GPS MCX M R/A - RG174 - 5m
118009027	MTX-Antenna Magnetic GPS MMCX M - RG174 - 5m
118009196	MTX-Antenna Magnetic GPS SMA M - RG174 - 200mm
118009221	MTX-Antenna Magnetic GPS SMA M - RG174 - 8m
118009012	MTX-Antenna Magnetic GPS SMB F - RG174 - 5m

## MTX-Antenna Magnetic GPS460 GPS

### Magnetic antenna

- Frequency: 1575.42 MHz (GPS)
- Connector: SMA M/Others
- LNA Gain: 26 dBi
- Voltage: 3-5V
- Dimensions: 45x45x14.6 mm



### ORDERING INFORMATION

118012133	MTX-Antenna Magnetic GPS460 GPS MCX M RA - RG174 - 3m, extra silicon on cable exit
118012128	MTX-Antenna Magnetic GPS460 GPS SMA M - RG174 - 3m

## MTX-Antenna Magnetic OPN GPS-GLONASS

### Magnetic antenna

- Frequency: 1575.42/1592-1610 MHz (GPS/Glonass)
- Connector: SMA M/other
- LNA gain: 26/27 dBi
- Voltage: 3-5V
- Dimensions: 54.5x14.6 mm



### ORDERING INFORMATION

118016060	MTX-Antenna Magnetic OPN7501M GPS-GNSS SMA M - RG174 -3m
-----------	--

## MTX-Antenna Magnetic P1 GPS

### Magnetic antenna

- Frequency: 1575.42 MHz (GPS)
- Connector: SMA M/other
- LNA Gain: 28 dBi
- Voltage: 3-5V
- Dimensions: 43x33x14 mm



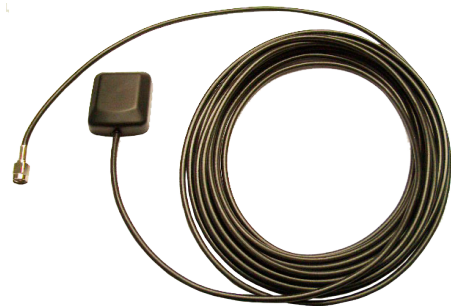
### ORDERING INFORMATION

<b>118014010</b>	<b>MTX-Antenna Magnetic P1 GPS SMA M - RG174 - 3m</b>
<b>118009008</b>	<b>MTX-Antenna Magnetic P1 GPS SMA M - RG174 - 5m</b>

## MTX-Antenna Magnetic Trimble GPS

### Magnetic antenna

- Frequency: 1575.42 MHz (GPS)
- Connector: SMA M
- LNA Gain: 28 dBi
- Voltage: 4.5-5.5V
- Dimensions: 30.8x35.8x11.8 mm



### ORDERING INFORMATION

199900426	MTX-Antenna Magnetic Trimble Mini Mag 3V GPS SMA M - RG174 - 5m 66800-52
-----------	--

## MTX-Antenna Magnetic/Adhesive OPN450 GPS/Glonass

### Magnetic/adhesive antenna

- Frequency: 1575 MHz
- Connector: Fakra C Jack F
- Gain: 26-28 @ 3-5 V
- Dimensions: 40x40x12.5/13.5 mm



### ORDERING INFORMATION

118016135	MTX-Antenna Magnetic/Adhesive OPN450 GPS/Glonass Fakra C Jack-F - RG174 - 2m
-----------	--

## MTX-Antenna Magnetic/Adhesive OPN4D01MP GPS/GNSS Passive

### Magnetic/adhesive antenna

- Frequency: 1575.42, 1598-1606 MHz
- Connector: SMA M
- Gain: 28 @ 2.7 V
- Dimensions: 41x34x13.5/14.5 mm



### ORDERING INFORMATION

118016141	MTX-Antenna Magnetic/Adhesive OPN4D01MP GPS/GNSS Passive SMA M - RG174 - 1m
118016172	MTX-Antenna Magnetic/Adhesive OPN4D01MP GPS/GNSS Passive SMA M - RG174 - 3m

## MTX-Antenna Screwed GPS490 GPS

### Screwed antenna

- Frequency: 1575.42 MHz (GPS)
- Connector: SMA M/other
- LNA Gain: 25 dBi
- Voltage: 3V
- Dimensions: 60.4x50.4x18.5 mm



### ORDERING INFORMATION

118012129	MTX-Antenna Screwed GPS490 GPS SMA M - RG174 - 3m
-----------	---

## MTX-Antenna Screwed OPN GPS

### Screwed antenna

- Frequency: 1575.42 MHz (GPS)
- Connector: SMB M/other
- LNA Gain: 26/28 dBi
- Voltage: 2.7-5.5V
- Dimensions: 41x19 mm



### ORDERING INFORMATION

118016025	MTX-Antenna Screwed OPN410B GPS SMB F - RG174 - 2.5m
-----------	--

## MTX-Antenna Screwed GPS/Glonass

### Screwed antenna

- Frequency: 1575.42 -1606 MHz (GPS)
- Connector: SMB M/other
- LNA Gain: 26/28 dBi
- Voltage: 2.7-5.5V
- Dimensions: 60x15 mm



### ORDERING INFORMATION

118016113

MTX-Antenna Screwed OPN7401 GPS-GNSS TNC M - RG174 -3m

## MTX-Antenna Screwed OPN4701 GPS-GNSS

### Screwed antenna

- Frequency: 1575.42, 1598-1606 MHz
- Connector: SMA M
- Gain: 28 @ 2.7 V
- Dimensions: Ø 52x17.5 mm



### ORDERING INFORMATION

118016151

MTX-Antenna Screwed OPN4701 GPS-GNSS SMA M - RG174 -1.5m

## MTX-Antenna BULLET III GPS

### Bullet antenna

- Frequency: 1575.42 MHz (GPS)
- Connector: TNC F
- LNA Gain: 35 dBi
- Voltage: 5V
- Dimensions: 77.5×66.2 mm



### ORDERING INFORMATION

199900423

MTX-Antenna BULLET III GPS TNC-F 35dB 5V P/N 57860-20 (spq 48)

## MTX-Antenna Adhesive GPS450 GPS

### Adhesive antenna

- Frequency: 1575.42 MHz (GPS)
- Connector: SMA M/other
- LNA Gain: 25 dBi
- Voltage: 3-5V
- Dimensions: 45x45x14.5 mm



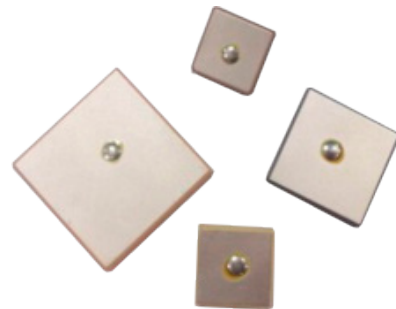
### ORDERING INFORMATION

118012127	MTX-Antenna Adhesive GPS450 GPS SMA M - RG174 - 3m
118012192	MTX-Antenna Adhesive GPS450 GPS SMB F - RG174 - 4m

## MTX-Antenna Internal Ceramic Chip GPS

### Patch antenna

- Frequency: GPS 1575.42 MHz/Glonass 1592-1610 MHz
- Gain: 2 -5 dBi



### ORDERING INFORMATION

118017018	MTX-Antenna Internal Ceramic CHIP GPS
-----------	---------------------------------------

## MTX-Antenna Internal SINICA GPS Glonass

### PCB mount SMD antenna

- Frequency: GPS 1559–1609 MHz
- LNA Gain: 3- dBi
- Dimensions: 7.0x5.8x0.4.15 mm



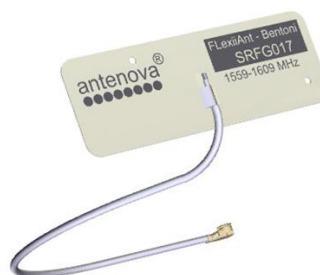
### ORDERING INFORMATION

118011034	MTX-Antenna Internal PCB Sinica GPS 1559-1609MHz 7x7x1.1mm (SR4G008)
-----------	--

## MTX-Antenna Internal Bentoni GPS/Glonass

### Internal antenna

- Frequency: 1559–1609 MHz
- Connector: U.FL
- Gain: -1.2 dBi
- Dimensions: 40.0x14.0x0.15 mm



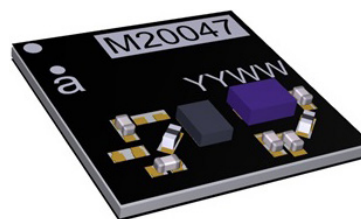
### ORDERING INFORMATION

118011036	MTX-Antenna Internal Bentoni GPS/Glonass U.FL1.13 - 100mm (SRFG017-100)
-----------	---

## MTX-Antenna Internal PCB GPS/Glonass

### Internal PCB antenna

- Frequency: GPS 1559-1609 MHz
- Gain: 18.5 dB
- Dimensions: 7x7x1.1 mm



### ORDERING INFORMATION

118011043	MTX-Antenna Internal PCB GPS/GLONASS 1559-1609MHz 7x7x0.9mm (M20047-1)
-----------	--

## MTX-Antenna Patch Active GPS - 13x13

### Patch antenna

- Frequency: GPS 1575.42 MHz
- Connector: U.FL
- LNA Gain: 30 dBi
- Voltage: 3-5 V
- Dimensions: 13x13x7 mm



### ORDERING INFORMATION

118009090	MTX-Antenna Patch Active GPS - 13x13 - U.FL - 150mm
118009227	MTX-Antenna Patch Active GPS - 13x13 - U.FL - 35mm
118009058	MTX-Antenna Patch Active GPS - 13x13 - U.FL - 57mm



## MTX-Antenna Patch Active GPS - 13x13

### Patch antenna

- Frequency: GPS 1575.42 MHz
- Connector: U.FL
- LNA Gain: 26 dBi
- Voltage: 3-5 V
- Dimensions: 13x13.4x5.5 mm



### ORDERING INFORMATION

118012211	MTX-Antenna Patch GPS 26dB 3.3VDC 13.4x13.4x5.5mm - U.FL - 100mm
118012236	MTX-Antenna Patch GPS 26dB 3.3VDC 13.4x13.4x5.5mm - U.FL - 45mm

## MTX-Antenna Patch GPS Active 20x20

### Patch antenna

- Frequency: GPS 1575.42 MHz
- Connector: U.FL/other
- LNA Gain: 15 dBi
- Voltage: 2.5-5 V
- Dimensions: 20x20x6 mm



### ORDERING INFORMATION

118012166	MTX-Antenna Patch GPS Active 20x20x6mm - U.FL - 100mm
-----------	---

## MTX-Antenna Patch OPN GPS/Glonass 25x25

### Patch antenna

- Frequency: GPS 1575.42 MHz/Glonass 1592-1610 MHz
- Connector: U.FL
- LNA Gain: 23-24 dB
- Voltage: 2.7V -5.5V
- Dimensions: 25x25x4 mm



### ORDERING INFORMATION

118016058	MTX-Antenna Pach OPN401 GPS/GNSS 25x25 U.FL - 155mm
-----------	---

## MTX-Antenna Patch OPNM013 GPS

### Patch antenna

- Frequency: GPS (1575.42 MHz)/GLONASS (1592 - 1610 MHz)
- Connector: U.FL
- Gain: 15 dB
- Dimensions: 13.5x13.5x8.4 mm



### ORDERING INFORMATION

118016138	MTX-Antenna Patch OPNM013 GPS 15db13.5x13.5 MHF4 - 100mm
118016149	MTX-Antenna Patch OPNM013 GPS 15db13.5x13.5 MHF4 - 37mm
118016161	MTX-Antenna Patch OPNM013 GPS 15db13.5x13.5 MHF4 0.81 - 45mm
118016162	MTX-Antenna Patch OPNM013 GPS 15db13.5x13.5 MHF4L 1.37 - 45mm

## MTX-Antenna WHIP 169 Mhz

### Screwed antenna

- Frequency: 169 MHz
- Connector: SMA M
- Gain: 0 dBi
- Dimensions: 140x13.5 mm
- Polarization: Lineal



### ORDERING INFORMATION

118012168	MTX-Antenna Whip H 169MHz SMA M
-----------	---------------------------------

## MTX-Antenna Omni Fiberglass 169 MHz 2 dBi

### Omni Fiberglass antenna

- Frequency: 169 MHz
- Connector: N F
- Gain: 2 dBi
- Dimensions: 480 mm length + bracket
- Polarization: Lineal-vertical



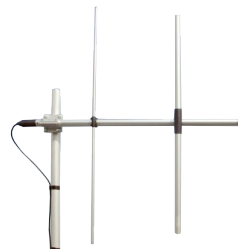
### ORDERING INFORMATION

118012190	MTX-Antenna Omni FIBERGLASS 169MHz 2dBi N F
-----------	---

## MTX-Antenna YAGI 169 MHz

### Yagi antenna

- Frequency: 169 MHz
- Connector: N F
- Gain: 7/8.5 dBi
- Dimensions: 990x1110/990x985 mm



### ORDERING INFORMATION

600005018	MTX-Antenna YAGI 169MHz 7dBi N F
600005012	MTX-Antenna YAGI 169MHz 8.5dBi N F

## MTX-Antenna WHIP 433 Mhz

### Whip antenna

- Frequency: 433 MHz
- Connector: SMA M
- Gain: 0 dBi
- Dimensions: 170x14.5 mm



### ORDERING INFORMATION

118012234	MTX-Antenna Whip 433MHz - SMA M
-----------	---------------------------------

## MTX-Antenna STUB 433 MHz

### Stub antenna

- Frequency: 433 MHz
- Connector: SMA M
- Gain: 0 dBi
- Dimensions: 80x5.5 mm



### ORDERING INFORMATION

118007026	MTX-Antenna STUB 433MHz SMA M R/A
118007027	MTX-Antenna STUB 433MHz SMA M

## MTX-Antenna STUB L05 OPN0115 White 433 Mhz

### Stub antenna

- Frequency: 433 MHz
- Connector: SMA M
- Gain: -4.4 dBi
- Dimensions: 56x9.5 mm



### ORDERING INFORMATION

118016153	MTX-Antenna STUB L05 OPN0115White 433MHz SMA M
-----------	--

## MTX-Antenna YAGI 433 MHz

### Yagi antenna

- Frequency: 433 MHz
- Connector: N F
- Gain: 5 dBi
- Cable length: 1m
- Power: 100W
- Dimensions: 400x365 mm
- Polarization: Linear



### ORDERING INFORMATION

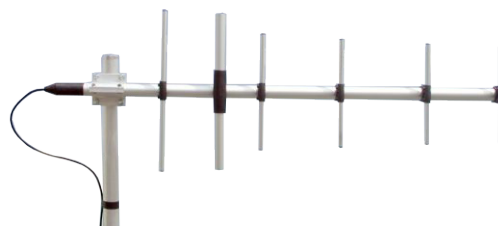
118006102

MTX-Antenna YAGI JC 433MHz 5dBi N F - RG58 - 1m

## MTX-Antenna YAGI 433-470 MHz

### Yagi antenna

- Frequency: 433-470 MHz
- Connector: N F
- Gain: 11 dBi
- Dimensions: 1180x400/1130x375 mm



### ORDERING INFORMATION

600005010

MTX-Antenna YAGI 433-470MHz 11dBi N F

## MTX-Antenna Adhesive OPN5415 433 MHz

### Adhesive antenna

- Frequency: 433 MHz
- Connector: customizable
- Gain: ~2.4 dBi
- Dimensions: 60x112.5x11.3 mm



### ORDERING INFORMATION

118016142

MTX-Antenna Adhesive OPN5415 433MHz - RG174 - 2m

## MTX-Antenna Omni FIBERGLASS 433-470 MHz

### Omni Fiberglass antenna

- Frequency: 433-470 MHz
- Connector: N F
- Gain: 2 dBi
- Dimensions: 780 mm



### ORDERING INFORMATION

600005011

MTX-Antenna Omni FIBERGLASS 433-470 MHz 2dBi N F - RG58 - 5m

## MTX-Antenna PANEL ATA 433 MHz

### Panel ATA antenna

- Frequency: 433 MHz
- Connector: N F
- Gain: 5 dBi
- Dimensions: 207x178x44 mm



### ORDERING INFORMATION

118013553

MTX-Antenna PANEL ATA 433MHz 5dBi N F

## MTX-Antenna WHIP External 868 MHz

### Whip antenna

- Frequency: 868 MHz
- Connector: SMA M
- Gain: 0 dBi
- Return Lost: -14 dB
- Dimensions: 84x14.5 mm
- Polarization: Linear



### ORDERING INFORMATION

118012075

MTX-Antenna Whip External 868MHz SMA M

## MTX-Antenna WHIP External 915 MHz

### Whip antenna

- Frequency: 915 MHz
- Connector: SMA M
- Gain: 3 dBi
- Return Lost: -14 dB
- Dimensions: 80x14.5 mm
- Polarization: Linear



### ORDERING INFORMATION

118012239

MTX-Antenna Whip External 915MHz SMA M

## MTX-Antenna STUB 868 MHz

### Stub antenna

- Frequency: 868 MHz
- Connector: SMA M
- Gain: 2 dBi
- Dimensions: 54x8 mm + connector
- Polarization: Linear



### ORDERING INFORMATION

118007012

MTX-Antenna Stub 868MHz SMA M

118007011

MTX-Antenna Stub 868MHz SMA M R/A

## MTX-Antenna STUBSW 915 MHz

### Stub antenna

- Frequency: 915 MHz
- Connector: SMA M
- Gain: 2 dBi
- Dimensions: 195x12.55 mm



### ORDERING INFORMATION

118009323

MTX-Antenna STUBSW 915MHz 2dBi SMA M

## MTX-Antenna STUBSW Screwed 868 MHz 2 dBi + Cable

### Stub antenna

- Frequency: 868 MHz
- Connector: Cable
- Gain: 2 dBi
- Dimensions: 88 mm + 15mm (cable)



### ORDERING INFORMATION

118009262

MTX-Antenna STUB Screwed 868MHz 2dBi - Cable U.FL 1.13 - 150mm

## MTX-Antenna STUBSW Screwed OPN 868 MHz + Cable

### Stub antenna

- Frequency: 868 MHz
- Connector: Cable
- Gain: 0 dBi
- Dimensions: 50x7.9 mm + cable



### ORDERING INFORMATION

118016125

MTX-Antenna STUB Screwed OPN1015 868MHz SMA M - RG174 - 1m



## MTX-Antenna STUBSW Screwed 868 MHz

### Stub antenna

- Frequency: 868 MHz
- Connector: U.FL
- Gain: 3 dBi
- Dimensions: 187 mm



### ORDERING INFORMATION

118009278	MTX-Antenna STUBSW Screwed 868MHz 3dBi - Cable U.FL 1.13 - 150mm
-----------	--

## MTX-Antenna STUB WR868 868 MHz

### Stub antenna

- Frequency: 868/915 MHz
- Connector: SMA M
- Gain: 1 dBi
- Dimensions: 54x8 mm + connector



### ORDERING INFORMATION

118012109	MTX-Antenna STUB WR868 868MHz SMA M
118012070	MTX-Antenna STUB WR868 868Mhz SMA M R/A
118012329	MTX-Antenna STUB WR868 868Mhz SMA M RP R/A

## MTX-Antenna STUB WS868 868 MHz

### Stub antenna

- Frequency: 868/915 MHz
- Connector: SMA M
- Gain: 1 dBi
- Dimensions: 54x8 mm + connector



### ORDERING INFORMATION

118012103	MTX-Antenna STUB WS868 868MHz SMA M
-----------	-------------------------------------

## MTX-Antenna STUBSW 868 MHz 3 dBi

### Stub antenna

- Frequency: 868 MHz
- Connector: SMA M
- Gain: 3 dBi
- Dimensions: 112 mm + connector
- Polarization: Linear-vertical



### ORDERING INFORMATION

118009157

MTX-Antenna STUBSW 868MHz 3dBi SMA M

## MTX-Antenna STUBSW 868 MHz 5 dBi

### Stub antenna

- Frequency: 868 MHz
- Connector: Cable
- Gain: 5 dBi
- Dimensions: 270x12 mm



### ORDERING INFORMATION

118009151

MTX-Antenna STUBSW 868MHz 5dBi SMA M

## MTX-Antenna STUBSW 868 MHz 2 dBi

### Stub antenna

- Frequency: 868/915 MHz
- Connector: SMA M/other
- Gain: 2dBi
- Dimensions: 113x10 mm



### ORDERING INFORMATION

118016076

MTX-Antenna STUBSW OPNW031 868/915MHz 2dBi SMA M

118016126

MTX-Antenna STUBSW OPNW031 868/915MHz 2dBi SMA M RP

## MTX-Antenna STUBSW Screwed 868/915 MHz 5 dBi + Cable

### Stub antenna

- Frequency: 868/915 MHz
- Connector: Cable
- Gain: 5 dBi
- Dimensions: 270x12 mm + connector



### ORDERING INFORMATION

118009188

MTX-Antenna STUBSW Screwed 868MHz 5dBi + cable 127mm - U.FL

118009216

MTX-Antenna STUBSW Screwed 915MHz 5dBi + cable 127mm - U.FL

## MTX-Antenna Magnetic Whip 868 MHz 3 dBi

### Magnetic whip antenna

- Frequency: 868 MHz
- Connector: SMA M
- Gain: 3 dBi
- Dimensions: 93.8x30.9 mm



### ORDERING INFORMATION

118016085

MTX-Antenna Magnetic Whip OPN3015M 868MHz SMA M - RG174 - 5m

## MTX-Antenna Screwed OPN 915 MHz

### Screwed antenna

- Frequency: 915 MHz
- Connector: N M
- Gain: 2 dBi
- Dimensions: 77.4x15 mm



### ORDERING INFORMATION

118016118

MTX-Antenna Screwed OPN6615B 915MHz dBi N M - R174 - 3m

## MTX-Antenna Screwed Button 868-915 MHz

### Screwed antenna

- Frequency: 868-915 MHz
- Connector: SMA M/SMA M RP
- Gain: 1.37 dBi
- Dimensions: 62.7x27.5 mm



### ORDERING INFORMATION

118012412	MTX-Antenna Screwed Button 868-915MHz SMA M - RG174 - 2m
118012414	MTX-Antenna Screwed Button 868-915MHz SMA M RP - RG174 - 2m

## MTX-Antenna Omni FIBERGLASS 868 MHz 5.5 dBi

### Omni Fiberglass antenna

- Frequency: 868 MHz
- Connector: SMA M/other
- Gain: 5.5 dBi
- Dimensions: 1045mm + bracket
- Polarization: Lineal-vertical



### ORDERING INFORMATION

118012359	MTX-Antenna Omni FIBERGLASS 868MHz 5.5dBi SMA M - RG58 - 5m
-----------	---

## MTX-Antenna Omni FIBERGLASS 868 MHz 9 dBi

### Omni Fiberglass antenna

- Frequency: 868 MHz
- Connector: N F
- Gain: 9 dBi
- Dimensions: 1340 mm
- Polarization: Lineal-vertical



### ORDERING INFORMATION

118009211	MTX-Antenna Omni FIBERGLASS 868MHz 9dBi N F
-----------	---

## MTX-Antenna Omni FIBERGLASS 868 MHz

### Omni Fiberglass antenna

- Frequency: 868 MHz
- Connector: N F/SMA M R/A
- Gain: 4.3/5.5 dBi
- Dimensions: 840 mm



#### ORDERING INFORMATION

118012389	MTX-Antenna Omni FIBERGLASS 868MHz 4.3dBi N F
118012411	MTX-Antenna Omni FIBERGLASS 868MHz 5.5dBi SMA M R/A - RG58 - 2m

## MTX-Antenna Omni FIBERGLASS SO 868/915 MHz

### Omni Fiberglass antenna

- Frequency: 868/915 MHz
- Connector: N F/SMA M
- Gain: 2.15 dBi
- Dimensions: 257 mm



#### ORDERING INFORMATION

600005016	MTX-Antenna Omni FIBERGLASS SO 868/915MHz 2.15dBi N F
600005017	MTX-Antenna Omni FIBERGLASS SO 868/915MHz 2.15dBi SMA M - RG58 - 5m

## MTX-Antenna Omni FIBERGLASS SPO 868/915 MHz

### Omni Fiberglass antenna

- Frequency: 868/915 MHz
- Connector: N F
- Gain: 6 dBi
- Dimensions: 840 mm



#### ORDERING INFORMATION

600005014	MTX-Antenna Omni FIBERGLASS SPO 868/915MHz 6dBi N F
600005015	MTX-Antenna Omni FIBERGLASS SPO 868/915MHz 6dBi SMA M - RG58 - 5m

## MTX-Antenna Panel 868 MHz

### Panel antenna

- Frequency: 806-894 MHz
- Connector: N F
- Gain: 8 dBi
- Dimensions: 228x193x39 mm
- Polarisation: Linear vertical



### ORDERING INFORMATION

118009191	MTX-Antenna PANEL 868MHz N F
-----------	------------------------------

## MTX-Antenna Panel ATA 868 MHz

### Panel antenna

- Frequency: 868 MHz
- Connector: N F
- Gain: 8 dBi
- Dimensions: 190x190x25 mm



### ORDERING INFORMATION

118013552	MTX-Antenna PANEL ATA 868MHz 8dBi N F
-----------	---------------------------------------

## MTX-Antenna YAGI 868 MHz

### Yagi antenna

- Frequency: 868 MHz
- Connector: SMA M
- Gain: 7 dBi
- Dimensions: 495x290x55 mm



### ORDERING INFORMATION

118006103	MTX-Antenna YAGI JC 868MHz 7dBi N F - RG58 - 1m
118006100	MTX-Antenna YAGI JC 868MHz 7dBi SMA M - LL195 - 500mm

## MTX-Antenna Internal MONTANA 868/900 MHz

### Internal antenna

- Frequency: 863–870 MHz and 902-928 MHz
- Connector: U.FL/other
- Gain: 2.4 dBi
- Dimensions: 45x0.15 mm



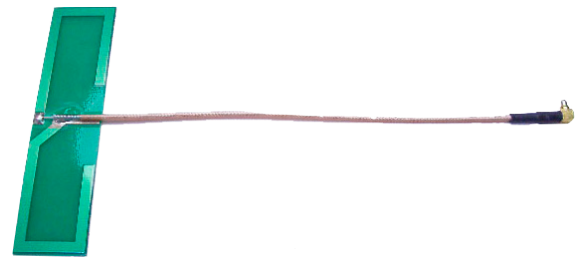
### ORDERING INFORMATION

118011029	MTX-Antenna Internal MONTANA 868/928MHz U.FL 1.13 - 150mm
-----------	---

## MTX-Antenna Internal MORAVA 868 MHz

### Internal antenna

- Frequency: 868 MHz
- Connector: U.FL/other
- Gain: 1.0 dBi
- Dimensions: 81x21 mm



### ORDERING INFORMATION

118012006	MTX-Antenna Internal MORAVA 868MHz MMCX R/A - RG178 - 160mm
118012099	MTX-Antenna Internal MORAVA 868MHz SMA M - RG178 - 300mm
118012141	MTX-Antenna Internal MORAVA 868MHz U.FL - 100mm

## MTX-Antenna Internal OPN 868 MHz

### Internal antenna

- Frequency: 868 MHz
- Connector: U.FL/other
- Gain: 0.8 dBi
- Dimensions: 40x7x0.2 mm



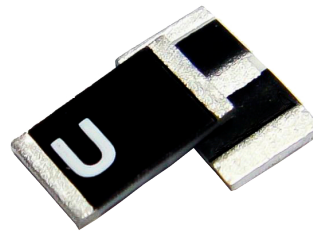
### ORDERING INFORMATION

118016112	MTX-Antenna Internal OPNF0115P 868MHz U.FL - 120mm
-----------	--

## MTX-Antenna Internal PCB 868 MHz

### PCB-SMD antenna

- Frequency: 863-870 MHz
- Connector: SMD mounting
- Gain: 0.9 dBi
- Dimensions: 5x3x0.5 mm



### ORDERING INFORMATION

118017017

MTX-Antenna Internal Ceramic CHIP ISM 868MHz

## MTX-Antenna Internal PCB LATONA 868 MHz

### PCB-SMD antenna

- Frequency: 791-960 MHz
- Connector: SMD mounting
- Gain: 1.5 dBi
- Dimensions: 20x11x1.6 mm



### ORDERING INFORMATION

118011035

MTX-Antenna Internal PCB Latona 868-960MHz 20x11x1.6mm (SR4C033)



## MTX-Antenna Magnetic ESFERA GSM+GPS

### Magnetic antenna

- Frequency: 900/1800 MHz
- Connector: FME F/other
- Gain: 0 dBi
- Frequency GNSS: 1575.42 MHz (GPS)
- Connector: SMA M/other
- LNA gain: 25 dBi
- Voltage: 3-5V
- Dimensions: 50x22 mm



### ORDERING INFORMATION

118009158	MTX-Antenna Magnetic ESFERA (GSM2 FME F) + (GPS SMA M) - RG174 - 5m
-----------	---

## MTX-Antenna Screwed SHARK GSM + GPS

### Screwed SHARK antenna

- Frequency: 900/1800 MHz
- Connector: FME F/other
- Gain: 0 dBi
- Frequency GNSS: 1575.42 MHz (GPS)
- Connector: SMA M/other
- LNA Gain: 27 dBi
- Voltage: 3-5V
- Dimensions: 69 mm



### ORDERING INFORMATION

118009214	MTX-Antenna Screwed SHARK (GSM2 FAKRA D Jack-F) + (GPS Fakra C Jack-F) - RG174 - 5m
<b>118009023</b>	<b>MTX-Antenna Screwed SHARK (GSM2 FME F) + (GPS SMA M) - RG174 - 200mm</b>
118009056	MTX-Antenna Screwed SHARK (GSM2 SMA M 700mm)+(GPS SMA M 730 mm)
118009233	MTX-Antenna Screwed SHARK (GSM2 SMA M) + (GPS SMA F) - RG174 - 5m
118009026	MTX-Antenna Screwed SHARK (GSM2 SMA M) + (GPS SMA M RP) - RG174 - 5m

## MTX-Antenna Magnetic ESFERA GSM+GPS

### Screwed antenna

- Frequency: 800/868/900/1800 MHz
- Connector: FME M/other
- Gain: 0 dBi
- Frequency: 2.4GHz
- Connector: FME M/other
- Gain: 0 dBi
- Frequency GNSS: 1575.42 MHz (GPS)
- Connector: SMA M/other
- LNA Gain: 26/27 dBi
- Voltage: 2.7-5 V
- Dimensions: 74x80x11 mm



### ORDERING INFORMATION

118016002	MTX-Antenna Screwed OPN640B (GSM2 FME F) + (GPS SMA M) + (2.4GHz SMA F) - RG174 - 5m
<b>118016028</b>	<b>MTX-Antenna Screwed OPN640B (GSM2 SMA M) + (GPS SMA M) + (2.4GHz SMA M) - RG174 - 400mm</b>
118016038	MTX-Antenna Screwed OPN640B (GSM2 SMA M) + (GPS SMA M) + (2.4GHz SMA M) - RG174 - 5m

## MTX-Antenna Magnetic/Adhesive OPN GSM3+GPS

### Magnetic antenna

- Frequency: 900/1800/1900/2100 MHz
- Connector: Fakra/other
- Gain: 0 dBi
- Frequency GNSS: 1575.42 MHz (GPS)
- Connector: Fakra/other
- LNA Gain: 32 dBi
- Voltage: 1.8 -5V
- Dimensions: 40x50x12.5 mm



### ORDERING INFORMATION

118016123

MTX-Antenna Magnetic/Adhesive OPN460MP (GSM5 Fakra D Jack-F) + (GPS Fakra C Jack-F) - RG174 - 2m

## MTX-Antenna Screwed CPG GSM5+GPS

### Screwed antenna

- Frequency: 824-960/1710-2170 MHz
- Connector: FME M/Others
- Gain: 3dBi
- Frequency GNSS: 1575.42 MHz (GPS)
- Connector: SMA M/other
- LNA Gain: 28 dBi
- Voltage: 3-5 V
- Dimensions: 102x33.5 mm



### ORDERING INFORMATION

118012225

MTX-Antenna Screwed CPG (GSM5 SMA M) + (GPS/GNSS SMA M) - RG174 - 3m

118012396

MTX-Antenna Screwed CPG (GSM5 SMA M RP) + (GPS SMA M RP) - RG174 - 2m

## MTX-Antenna Screwed ESFERA GSM5+GPS

### Screwed antenna

- Frequency: 800/900/1800/1900/2100 MHz
- Connector: FME F/other
- Gain: 0 dBi
- Frequency GNSS: 1575.42 MHz (GPS)
- Connector: SMA M/other
- LNA Gain: 27 dBi
- Voltage: 3-5V
- Dimensions: 53x23 mm



### ORDERING INFORMATION

118009144	MTX-Antenna Screwed ESFERA (GSM5 FME F) + (GPS SMA M) - RG174 - 3m
118009201	MTX-Antenna Screwed ESFERA (GSM5 FME F) + (GPS SMA M) - RG174 - 5m
118009167	MTX-Antenna Screwed ESFERA (GSM5 SMA M) + (GPS SMA M) - RG174 - 5m
118009246	MTX-Antenna Screwed ESFERA (GSM5 U.FL) + (GPS U.FL) 1.32 - 300mm

## MTX-Antenna Screwed OPN GSM5+GPS

### Screwed antenna

- Frequency: 800/900/1800/1900/2100 MHz
- Connector: SMA M/FAKRA/other
- Gain: 2.2 dBi
- Frequency GNSS: 1575.42 MHz (GPS)
- Connector: SMA M/other
- LNA Gain: 26-27 dBi
- Voltage: 3-5V
- Dimensions: 75x15 mm



### ORDERING INFORMATION

118016124	MTX-Antenna Screwed OPN660 (GSM5 Fakra D Jack-F) + (GPS Fakra C Jack-F) - RG174 - 200mm
118016006	MTX-Antenna Screwed OPN660 (GSM5 Fakra D Jack-F) + (GPS Fakra C Jack-F) - RG174 - 1m
118016016	MTX-Antenna Screwed OPN660 (GSM5 SMA M)+ (GPS SMA M) - RG174 - 15m

## MTX-Antenna Screwed SHARK OPN GSM5+GPS

### Screwed antenna

- Frequency: 800/900/1800/1900/2100 MHz
- Connector: FME F/other
- Gain: 2.2 dBi
- Frequency GNSS: 1575.42 MHz (GPS)/Glonass
- Connector: SMA M/other
- LNA Gain: 26/27 dBi
- Voltage: 2.7-5.5V
- Dimensions: 98x59.5x48 mm



### ORDERING INFORMATION

118016054	MTX-Antenna Screwed OPN860B (GSM5 FME F)+(GPS SMB F) - RG174 - 500mm
118016022	MTX-Antenna Screwed OPN860B (GSM5 FME M)+(GPS SMB F) - RG174 - 500mm
118016121	MTX-Antenna Screwed OPN860BG (GSM5 Fakra D Jack-F)+(GPS/Glonass Fakra C Jack-F) - RG174 - 5m

## MTX-Antenna Screwed ROOFBALL GSM3+GPS

### Screwed antenna

- Frequency: 900/1800/2100 MHz
- Connector: FME M/SMA M/other
- Gain: 0 dBi
- Frequency GNSS: 1575.42 MHz (GPS)
- Connector: SMA M/other
- LNA Gain: 27 dBi
- Voltage: 3-5 V
- Dimensions: 53x30x30 mm



### ORDERING INFORMATION

<b>118009078</b>	<b>MTX-Antenna Screwed ROOFBALL (GSM3 FME F) + (GPS SMA M) - RG174U - 5m</b>
118009113	MTX-Antenna Screwed ROOFBALL (GSM3 FME F) + (GPS SMB F) - RG174 - 5m
<b>118009096</b>	<b>MTX-Antenna Screwed ROOFBALL (GSM3 SMA M) + (GPS SMA M) - RG174 - 5m</b>
118009245	MTX-Antenna Screwed ROOFBALL (GSM3 U.FL) + (GPS U.FL) 1.32 - 300mm

## MTX-Antenna Adhesive BLADE GSM5+GPS

### Adhesive antenna

- Frequency: 800/900/1800/1900/2100 MHz
- Connector: FME M/other
- Gain: 2.5 dBi
- Frequency GNSS: 1575.42 MHz (GPS)
- Connector: SMA M/other
- LNA Gain: 27 dBi
- Voltage: 3-5 V
- Dimensions: 147x26x16 mm



### ORDERING INFORMATION

<b>118009145</b>	<b>MTX-Antenna Adhesive BLADE (GSM5 FME F) + (GPS SMA M) - RG174 - 3m</b>
<b>118009146</b>	<b>MTX-Antenna Adhesive BLADE (GSM5 SMA M) + (GPS SMA M) - RG174 - 3m</b>

## MTX-Antenna Adhesive ESFERA GSM5+GPS

### Adhesive antenna

- Frequency: 800/900/1800/1900/2100 MHz
- Connector: FME M/SMA M/other
- Gain: 0dBi
- Frequency GNSS: 1575.42 MHz (GPS)
- Connector: SMA M/other
- LNA Gain: 27 dBi
- Voltage: 3-5 V
- Dimensions: 50x17 mm
- Orientation: glass mounting, GPS on adhesive side



### ORDERING INFORMATION

118009213	MTX-Antenna Adhesive ESFERA (GSM5 FME F) + (GPS SMA M) - RG174 - 0.5m
<b>118009033</b>	<b>MTX-Antenna Adhesive ESFERA (GSM5 FME F) + (GPS SMA M) - RG174 - 1m</b>
118009207	MTX-Antenna Adhesive ESFERA (GSM5 FME F) + (GPS SMA M) - RG174 - 2m
<b>118009011</b>	<b>MTX-Antenna Adhesive ESFERA (GSM5 FME F) + (GPS SMA M) - RG174 - 5m</b>
118009228	MTX-Antenna Adhesive ESFERA (GSM5 SMA M) + (GPS SMA M) - RG174 - 2m
118009143	MTX-Antenna Adhesive ESFERA (GSM5 SMA M) + (GPS SMA M) - RG174 - 5m

## MTX-Antenna Adhesive OPN GSM33+GPS

### Adhesive antenna

- Frequency: 900/1800/1900/2100 MHz
- Connector: SMA M/Fakra/other
- Gain: 0 dBi
- Frequency GNSS: 1575.42 MHz (GPS)
- Connector: Fakra/other
- LNA Gain: 26/27 dBi
- Voltage: 2.7/5.5 V
- Dimensions: 14.3x77x34 mm



### ORDERING INFORMATION

118016009	MTX-Antenna Adhesive OPN425 (GSM3 Fakra D Jack-F) + (GPS Fakra C Jack-F) - RG174 - 1.5m
118016088	MTX-Antenna Adhesive OPN425 (GSM3 Fakra D Jack-F) + (GPS Fakra C Jack-F) - RG174 - 250mm
118016010	MTX-Antenna Adhesive OPN425 (GSM3 Fakra D Jack-F) + (GPS Fakra C Jack-F) - RG174 - 5m
118016053	MTX-Antenna Adhesive OPN425 (GSM3 SMA M) + (GPS/GNSS SMA M) - RG174 - 3m

## MTX-Antenna Adhesive OPN GSM5+GPS

### Adhesive antenna

- Frequency: 824-960/1710-2170 MHz
- Connector: SMA M/Fakra/other
- Gain: 2.4/3.0 dBi
- Frequency GNSS: 1575.42-1606 MHz (GPS-Glonass)
- Connector: Fakra/other
- LNA Gain: 28 dBi
- Voltage: 1.5/3.6 V
- Dimensions: 83x35x13.3 mm



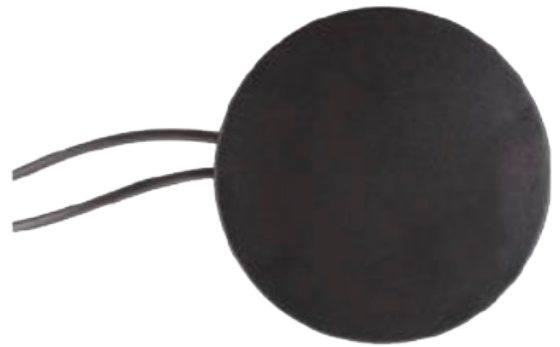
### ORDERING INFORMATION

118016097	MTX-Antenna Adhesive OPN4800 (GSM5 FME F R/A) + (GPS SMA M R/A) - RG174 - 5m
118016089	MTX-Antenna Adhesive OPN4800 (GSM5 FME F) + (GPS SMA M) - RG174 - 5m

## MTX-Antenna Adhesive OPN GSM5+GPS

### Magnetic antenna

- Frequency: 824-960/1710-2170 MHz
- Connector: SMA M/Fakra/other
- Gain: 2.14 dBi
- Frequency GNSS: 1575.42 MHz (GPS)
- Connector: FME F/SMA M/other
- LNA gain: 26/27 dBi
- Voltage: 2.7/5.5 V
- Dimensions: 77x12 mm



### ORDERING INFORMATION

118016061

MTX-Antenna Adhesive OPN620P (GSM5 - FME F) + (GPS - SMA M) - RG174 3m



## MTX-Antenna Adhesive OPN GSM5+GPS+WiFi 2.4

### Adhesive antenna

- Frequency: 800/900/1800/1900/2100 MHz
- Connector: FME M/other
- Frequency: 2.4 GHz
- Connector: FME M/other
- Frequency GNSS: 1575.42 MHz (GPS)-1610 MHz (GNSS)
- Connector: SMA M/other
- LNA Gain: 26/27 dBi
- Voltage: 2.7-5 V
- Dimensions: 77x34x14 mm



### ORDERING INFORMATION

118016055	MTX-Antenna Adhesive OPN426 (GSM5 Fakra D F)+(GPS Fakra C F)+(2.4GHz Fakra I F) - RG174 - 2.5m
118016073	MTX-Antenna Adhesive OPN426 (GSM5 SMA M)+(GPS SMA M)+(2.4GHzSMA M) - RG174 - 2.5m
118016078	MTX-Antenna Adhesive OPN426 (GSM5 SMA M)+(GPS SMA M)+(2.4GHzSMA M) - RG174 - 3.5m
118016062	MTX-Antenna Adhesive OPN426G (GSM5 - SMA M) + (GPS/GNSS - SMA M) + (2.4MHz - SMA M) - RG174 3m

## MTX-Antenna Screwed SHARK OPN GSM5+GPS+WiFi 2.4

### Screwed antenna

- Frequency: 800/900/1800/1900/2100 MHz
- Connector: SMA M/other
- Gain: 2.2 dBi
- Frequency: 2.4 GHz
- Connector: SMA M/other
- Gain: 2 dBi
- Frequency GNSS: 1575.42 MHz (GPS)
- Connector: SMA M/other
- LNA Gain: 26/27 dBi
- Voltage: 2.7-5.5 V
- Dimensions: 98x59x48 mm



### ORDERING INFORMATION

118016045	MTX-Antenna Screwed Shark OPN866B (GSM5 Fakra D F)+(GPS Fakra C F)+(2.4GHz Fakra I F)- RG174 - 200mm
118016041	MTX-Antenna Screwed Shark OPN866B (GSM5 Fakra D F)+(GPS Fakra C F)+(2.4MHz SMA M) - RG174 - 3m

## MTX-Antenna Screwed CMG LTE700/2600 MIMO+GPS

### Screwed antenna

- Frequency LTE: 690-960/1710-2700 MHz x 2
- Connector: SMA M/FME M/other
- Gain: 1.9/4.3 dBi x2i
- Frequency GNSS: 1575.42-1602 MHz (GPS - Glonass)
- Connector: SMA M/other
- LNA Gain: 26 dBi
- Voltage: 2.8-5 V
- Dimensions: 102x32.5 mm



### ORDERING INFORMATION

118012380	MTX-Antenna Screwed CMG (GSM5+LTE700/2600 MIMO - FME F)+(GPS - SMA M) RG174 - 1m
118012374	MTX-Antenna Screwed CMG (GSM5+LTE700/2600 MIMO - SMA M)+(GPS - SMA M) RG174 - 2m

## MTX-Antenna Screwed CLG LTE700/2600+GPS/Glonass

### Screwed antenna

- Frequency: 690-800/800-960/1710-2170/2500-2700 MHz
- Connector: SMA M/other
- Gain: 1/2.5/3.8/5 dBi
- Frequency GNSS: 1575.42 MHz/1602 MHz (GPS/ Glonass)
- Connector: SMA M/other
- LNA Gain: 27 dBi
- Voltage: 2.5-5 V
- Dimensions: 102x33.5 mm



### ORDERING INFORMATION

118012325	MTX-Antenna Screwed CLG (GSM5+4G/LTE SMA M)-(GPS/GNSS SMA M) RG174 2m
-----------	---

## MTX-Antenna Adhesive OPN LTE700/2600+GPS/Glonass

### Adhesive antenna

- Frequency: 690-960/1710-2170/2500-2700 MHz
- Connector: SMA M/other
- Gain: 2.7/3.0/5.9 dBi
- Frequency GNSS: 1575.42/1602 MHz (GPS/Glonass)
- Connector: SMA M/other
- LNA Gain: 28 dBi
- Voltage: 1.5-3.6 V
- Dimensions: 83x35x13 mm



### ORDERING INFORMATION

118016095	MTX-Antenna Adhesive OPN4841 (GSM5-LTE700/2600 FME F R/A) + (GPS SMA M R/A) - LMR100 + RG174 - 5m
118016117	MTX-Antenna Adhesive OPN4841 (GSM5-LTE700/2600 FME F) + (GPS SMA M) - LMR100 + RG174 - 3m
<b>118016092</b>	<b>MTX-Antenna Adhesive OPN4841 (GSM5-LTE700/2600 FME F) + (GPS SMA M) - LMR100 + RG174 - 5m</b>

## MTX-Antenna Adhesive LTE700/2600 +WiFi 2.4/5

### Adhesive antenna

- Frequency: 690-960/1710-2170/2500-2700 MHz
- Connector: SMA M/other
- Gain: 3/3.2/5.6 dBi
- Frequency WiFi: 2.4/5 GHz
- Connector: SMA M RP/other
- Gain: 3.7/5.6 dBi
- Dimensions: 83x35x13.3 mm



### ORDERING INFORMATION

118016077

MTX-Antenna Adhesive OPN4847P (GSM5-LTE700/2600 SMA M) + (2.4/5GHz SMA M RP) - RG174 - 2m

## MTX-Antenna Magnetic MP-LWG +LTE +WiFi 2.4GHz+GPS/Glonass

### Magnetic antenna

- Frequency LTE: 690-960/1710-2700 MHz
- Polarization: Linear
- Gain: 1.9/4.3 dBi
- VSWR: <2.5:1
- Frequency WiFi: 2.4-2.5 GHz
- Polarization: Linear
- Gain: 2 dBi
- VSWR: <2.0:1
- Frequency GNSS: 1575.42-1602 MHz GPS-Glonass
- Polarization: RHCP
- LNA Gain: 26 dBi
- Voltage: 2.8-5 V
- Connector: SMA M/other
- Dimensions: 102x38 mm



### ORDERING INFORMATION

118012XXX

MTX-Antenna Magnetic MP-LWG (GSM5/LTE700/2600 SMA M )+(GPS SMA M)+(2.4MHz SMA M RP) - RG174 - 2m

## MTX-Antenna Screwed LPO LTE700/2600+GPS/Glonass+WiFi 2.4/5

### Screwed antenna

- Frequency LTE: 690-960/1710-2700 MHz
- Connector: 2x SMA M/other
- Polarization: Linear
- Gain: 3/4 dBi
- Frequency WiFi: 2.4-2.5/4.9-6 GHz
- Connector: 2x SMA M RP/other
- Polarization: Linear
- Gain: 5/5 dBi
- Frequency GNS: 1575.42 MHz (GPS)/Glonass
- Connector: SMA M/other
- Polarization: RHCP
- LNA Gain: 28 dBi
- Voltage: 2.8 -5 V
- Dimensions: 140x80 mm



### ORDERING INFORMATION

118012375

MTX-Antenna Screwed LPO (GSM5/LTE700/2600 MIMO SMA M )+(GPS SMA M)+(2.4/5MHz SMA M RP) - RG174 - 2m

## MTX-Antenna Screwed OPN LTE+GNSS+GSM+WiFi 2.4

### Screwed-heavy duty antenna

- Frequency 1 & 2: 690-960/1710-2170/2500-2700 MHz
- Connector 1 & 2: SMA M/FME M/other
- Gain 1: 2.4/2.5/3.3 dBi
- Gain 2: 2/2.6/2.4 dBi
- Frequency: 2.4/5 GHz
- Connector: SMA M RP/other
- Gain: 2.3/1.9 dBi
- Frequency GNSS: 1575.42-1602 MHz GPS-Glonass
- Connector: SMA M/other
- LNA Gain: 28 dBi
- Voltage: 1.5 -3.6 V
- Dimensions: 96x90 mm



### ORDERING INFORMATION

118016111

MTX-Antenna Screwed OPN7050 (GSM5+LTE - 2xFME F)+(2.4 - 2xSMA M RP)+(GPS Glns-SMA M) 4xRG178/RG174 - 5m

## MTX-Antenna Screwed VT LTE700/2600+GPS+WiFi 2.4

### Screwed antenna

- Frequency: 690-960/1710-2700 MHz
- Connector: SMA M/other
- Gain: 2 dBi
- Frequency: 2.4 GHz
- Connector: SMA M RP/other
- Gain: 3 dBi
- Frequency GNSS: 1575.42 MHz GPS
- Connector: SMA M/other
- LNA Gain: 28 dBi
- Voltage: 2.7-5 V
- Dimensions: 50x48 mm



### ORDERING INFORMATION

118006032

MTX-Antenna Screwed VT (GSM5+LTE700/2600 SMA M) + (GPS SMA M) +(2.4GHz SMA M) - RG174 - 400mm

## MTX-Antenna Screwed OPN GPS+WiFi2.4/5

### Screwed antenna

- Frequency: 2.4/5 GHz
- Connector: SMA M RP/other
- Gain: 4.4/4.8 dBi
- Frequency GNSS: 1575.42 MHz GPS
- Connector: SMA M/BNC/other
- LNA Gain: 26 dBi
- Voltage: 3-5 V
- Dimensions: 77.4x15.9 mm



### ORDERING INFORMATION

118016070

MTX-Antenna Screwed OPN663B (GPS BNC)+( 2.4/5GHz SMA M RP) - RG174 - 2m

## MTX-Antenna Magnetic OPN GPS-Glonass+TETRA

### Magnetic antenna

- Frequency TETRA: 380-500 MHz
- Connector: SMA M/other
- Gain: 6 dBi
- Frequency GNSS: 1575.42/1592-1610 MHz (GPS/ Glonass)
- Connector: SMA M/other
- LNA Gain: 26-27 dBi
- Voltage: 3-5 V
- Dimensions: 150x33 mm



### ORDERING INFORMATION

118016059	MTX-Antenna Magnetic OPN650 (GPS-GNSS SMA M) + (TETRA TNC M) -RG174/ RG58 -3m
-----------	---

## 16.2 MTX-Antenna Screwed GPS+TETRA

### Screwed antenna

- Frequency TETRA: 380-500 MHz
- Connector: SMA M/TNC M/other
- Gain: 2 dBi
- Frequency GNSS: 1575.42 MHz (GPS)
- Connector: SMA M/TNC M/other
- LNA Gain: 25-27 dBi
- Voltage: 2.7-5.5 V
- Dimensions: 60x200 mm



### ORDERING INFORMATION

118016066	MTX-Antenna Screwed OPN7507B (GPS SMA M) + (TETRA TNC M) - RG174 - 1.5m
118016044	MTX-Antenna Screwed OPN7507B (GPS SAM M) + (TETRA SMA M) - RG174 - 1.5m
118016067	MTX-Antenna Screwed OPN7507B - Whip_Insert Screw M5



## MTX-Antenna Screwed OPN GPS-Glonass+TETRA

### Screwed antenna

- Frequency TETRA: 380-500 MHz
- Connector: SMA M/TNC M/other
- Gain: 2 dBi
- Frequency GNSS: 1575.42–1610 MHz (GPS-Glonass)
- Connector: SMA M/TNC M/other
- LNA Gain: 26-27 dBi
- Voltage: 2.7-5.5 V
- Dimensions: 175x153x59.5 mm



### ORDERING INFORMATION

118016122	MTX-Antenna Screwed OPN857BG (GPS SMA M) + (TETRA TNC M) - RG174 - 4m
118016068	MTX-Antenna Screwed OPN857BG (GPS SMA M) + (TETRA TNC M) - RG174 - 5m
118016069	MTX-Antenna Screwed OPN857BG - Whip_Insert TETRA screw M6

## MTX-Antenna RFID UHF PANEL 433MHz

### Panel antenna

- Frequency: 433 MHz
- Connector: N-Type F
- Gain: 7 dBi
- Dimensions: 370x370x40 mm



### ORDERING INFORMATION

500404020

MTX-Antenna Panel 433MHz RFID SlenderIII (ACIOM125)

## MTX-Antenna RFID UHF PANEL NOVANTA

### Panel antenna

- Frequency: 865-956 MHz
- Connector: TNC F RP
- Gain: 7.0 dBic/8.5 dBic
- Return Lost: -18 dB
- Power rating: 6W
- Polarisation: Circular RHCP



### ORDERING INFORMATION

500401018

MTX-Antenna RFID PANEL 20x20cm UHF 868MHz 7dBi TNC F RP

500401022

MTX-Antenna RFID PANEL 25x25cm UHF 868MHz 8.5dBi TNC F RP

500401010

MTX-Antenna RFID PANEL 30x30cm UHF 868MHz 8.5dBi TNC F RP

## MTX-Antenna RFID UHF PANEL RCP

### Panel antenna

- Frequency: 865 MHz
- Connector: N F
- Gain: 6.0 dBic
- Dimensions M1: 20x20x40 mm
- Polarisation: Circular RHCP



### ORDERING INFORMATION

118012369

MTX-Antenna RFID PANEL 20x20cm UHF 868MHz 6dBi - N F

## MTX-Antenna RFID UHF PANEL PACH25

### Panel antenna

- Frequency: 865 MHz
- Connector: N F
- Gain: 8.0 dBic
- Dimensions M1: 25x25x40 mm
- Polarisation: Circular RHCP



### ORDERING INFORMATION

118010106

MTX-Antenna RFID PANEL PATCH 25x25cm UHF 868MHz 8dBi N F - LL195 -300mm (w/o Brk)

## MTX-Antenna RFID UHF PANEL

### Panel antenna

- Frequency: 868 MHz
- Connector: N F
- Gain: 8 dBi
- Dimensions: 190x190x25 mm



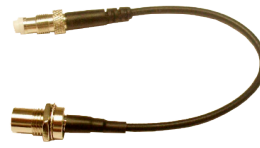
### ORDERING INFORMATION

118013550

MTX-Antenna RFID PANEL 19X19cm UHF 868MHz 8dBi - N F

## MTX-Cable FME M - FME F

- Connector: FME F to FME M BH
- Cable: RG174
- Cable: LL195/RG58/CFD200



### ORDERING INFORMATION

118008109	MTX-Cable FME M - FME F - RG174 - 6m
118008096	MTX-Cable FME M - FME F R/A - RG174 - 5m
118008133	MTX-Cable FME M BH - FME F - RG174 - 150mm
118008026	MTX-Cable FME M BH - FME F - RG174 - 200mm
118008099	MTX-Cable FME M BH - FME F - RG174 - 450mm
<b>118008234</b>	<b>MTX-Cable FME M BH - FME F - RG174 - 1m</b>
118008031	MTX-Cable FME M BH - FME F - RG174 - 2m
<b>118008021</b>	<b>MTX-Cable FME M BH - FME F - RG174 - 5m</b>
118003363	MTX-Cable FME M - FME F - CFD200 - 11m
118008197	MTX-Cable FME M - FME F - CFD200 - 7.5m
118008551	MTX-Cable FME M - FME F - LL195 - 10m
<b>118008204</b>	<b>MTX-Cable FME M - FME F - LL195 - 5m</b>
118008156	MTX-Cable FME M - FME F - RG58 - 10m

## MTX-Cable SMA M - SMA F

- Connector: SMA M to SMA F BH
- Cable: RG174
- Cable: LL195/RG58/CFD200



### ORDERING INFORMATION

<b>118008000</b>	<b>MTX-Cable SMA M - SMA F (BH) - RG174 - 250mm</b>
118008266	MTX-Cable SMA M - SMA F BH - RG174 - 500mm
118008232	MTX-Cable SMA M - SMA F BH - RG174 - 1m
118008116	MTX-Cable SMA M - SMA F BH - RG174 - 3m
<b>118008094</b>	<b>MTX-Cable SMA M - SMA F BH - CFD200 - 7.5m</b>
118008046	MTX-Cable SMA M - SMA F BH - CFD200 - 5m
<b>118012546</b>	<b>MTX-Cable SMA M - SMA F - RF240 - 5m</b>
<b>118008557</b>	<b>MTX-Cable SMA M - SMA F BH - LL195 - 5m</b>
<b>118008556</b>	<b>MTX-Cable SMA M - SMA F BH - LL195 - 10m</b>
<b>118008201</b>	<b>MTX-Cable SMA M - SMA F - RG58 - 10m</b>
118008231	MTX-Cable SMA M - SMA F - RG58 - 5m

## MTX-Cable SMA F FME F

- Connector: SMA F to FME F
- Cable: RG174 /LL195



### ORDERING INFORMATION

<b>118008002</b>	<b>MTX-Cable SMA F BH - FME F - RG174 - 200mm</b>
<b>118008549</b>	<b>MTX-Cable SMA F - FME F - LL195 - 10m</b>
<b>118008548</b>	<b>MTX-Cable SMA F - FME F - LL195 - 5m</b>

## MTX-Cable SMA M – N M

- Connector: SMA M to N M
- Cable: LL195

### ORDERING INFORMATION

<b>118008553</b>	<b>MTX-Cable SMA M - N M - LL195 - 10m</b>
<b>118008552</b>	<b>MTX-Cable SMA M - N M - LL195 - 5m</b>

## MTX-Cable FME F – N M

- Connector: FME F to N M
- Cable: RG58 /LL195

### ORDERING INFORMATION

<b>118008202</b>	<b>MTX-Cable FME F - N M - LL195 - 5m</b>
------------------	---

## MTX-Magnetic Base with Cable



### ORDERING INFORMATION

<b>118009229</b>	<b>MTX-MagneticBase SMA M RP - RG174 - 2m (Base Connector SMA F RP)</b>
118009230	MTX-MagneticBase SMA M - RG174 - 2m (Base Connector SMA F RP)
<b>118009248</b>	<b>MTX-MagneticBase SMA M - RG174 - 3m (Base Connector SMA F)</b>
118009249	MTX-MagneticBase FME F - RG174 - 3m (Base Connector SMA F)

## MTX-RF Connector Adapter

### ORDERING INFORMATION

<b>118015064</b>	<b>MTX-RF Connector Adapter SMA M - FME M</b>
118015051	MTX-RF Connector Adapter SMA M - N M
<b>118015067</b>	<b>MTX-RF Connector Adapter SMA M - SMA F RP</b>
<b>118015066</b>	<b>MTX-RF Connector Adapter SMA M R/A - SMA F</b>
<b>118015068</b>	<b>MTX-RF Connector Adapter SMA M RP - SMA F</b>
118015074	MTX-RF Connector Adapter SMA M RP R/A - SMA F
118015073	MTX-RF Connector Adapter SMA M RP R/A - SMA F RP
<b>118015063</b>	<b>MTX-RF Connector Adapter SMA F - FME F</b>
118015072	MTX-RF Connector Adapter SMA F - FME M
118015071	MTX-RF Connector Adapter SMA F - SMA F
118015058	MTX-RF Connector Adapter SMA F - N M
118015049	MTX-RF Connector Adapter FME M - TNC M
118015069	MTX-RF Connector Adapter FME F - FME F
118015043	MTX-RF Connector Adapter TNC M RP - TNC F

SMA F to FME F



SMA M to FME M



SMA M to SMA F RP



SMA M RP to SMA F



SMA M R/A to SMA F



FME M to TNC M



TNC M RP - TNC F



SMA M to N M



#### **MADRID**

Alejandro Sánchez, 109  
28019 Madrid  
Tel 902.19.81.46  
Fax 902.99.54.14

#### **BARCELONA**

@SantCugat Business Park  
Av. Via Augusta 15-25, Edificio B2  
08174 Sant Cugat del Vallés (Barcelona)  
Tel 902.19.81.46 / Fax 902.99.54.14

#### **DURANGO**

Tel 902.19.81.46  
Fax 902.99.54.14

#### **VALENCIA**

Tel 902.19.81.46  
Fax 902.99.54.14

#### **SEVILLE**

Calle Arquitectura, 1 – Torre 6  
41015 Seville  
Tel 902.19.81.46 Fax 902.99.54.14

#### **PORTUGAL**

Av. Coronel Eduardo Galhardo, 7, 1º  
1170-105 Lisbon  
Tel +351 218 162 625  
Fax +351 218 149 482

#### **UNITED ARAB EMIRATES**

Tel +34.91.560.27.37  
Fax +34.91.565.28.65

#### **USA**

Tel +34.91.560.27.37  
Fax +34.91.565.28.65

#### **APAC**

9F, No. 156, Sec. 3, Minsheng E. Rd.,  
Songshan Dist., Taipei City  
10596, Taiwan Tel: +886-965-333-367



matrix.es | matrix@matrix.es