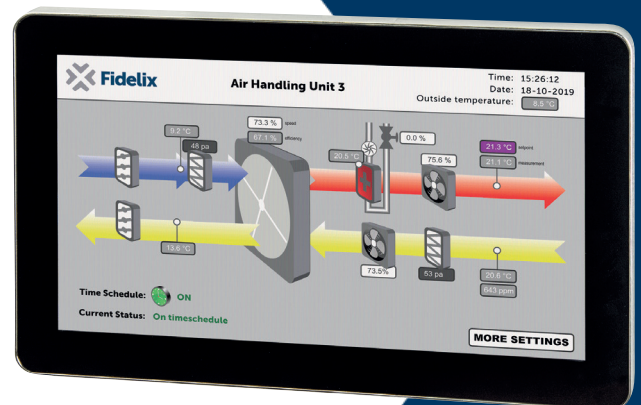




## Fdx Compact VISIO-10-X

10.1" touchscreen HMI for Fidelix BMS

- HD HMI running Android
- Multi-touch support
- Ethernet and Wi-Fi connection
- User friendly built-in application to connect to Fidelix-controllers



### Connect and visualize

The Visio-10-X touch screen Human Machine Interface display is an easy way to view and control your Fidelix BMS. The panel can be used to access Fidelix controllers in the same network. The panel can be freely installed either on a controller cabinet, like for example on the FX-Spider-40/10 or away from the controller closer to the users.

Providing easy access and a fast connection to the controllers, the panel is the perfect way to facilitate maintenance or support personnel in their handling with the building's systems.

With the integrated Fidelix VisioApp, configuring and using the Fidelix BMS is fast and easy.

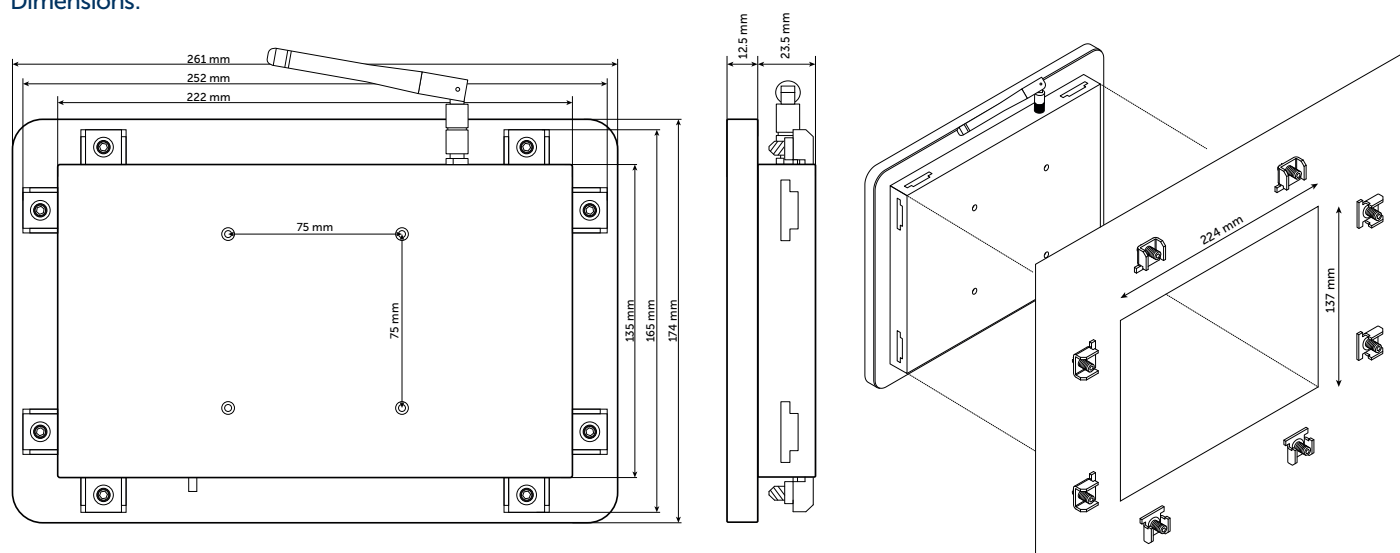


The Visio-10-X HMI featured on the Fidelix Spider-40/10 controller.

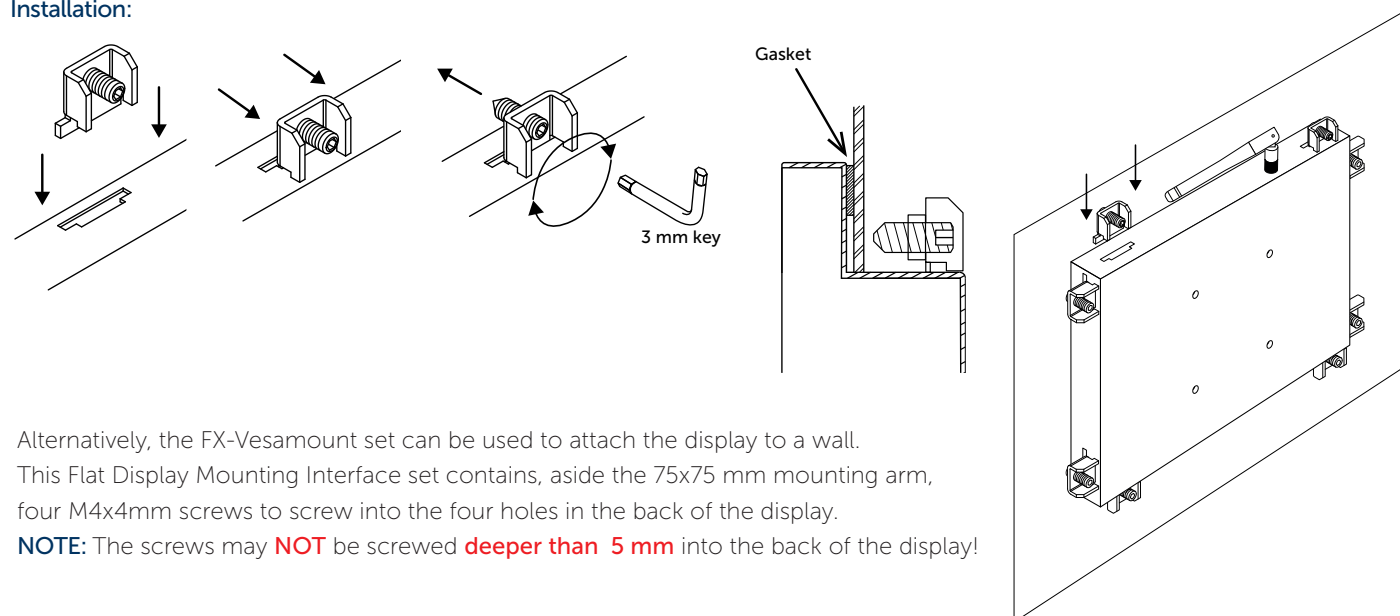
**Screen size:** 10.1 Inch  
**Aspect ratio:** 16:10  
**Resolution:** 1280 \* 800 pixels  
**Viewing angle:** 85/85/85/85  
**Number of colours:** 16.7 million  
**Contrast ratio:** 800:1  
**Brightness:** 300 cd/ m<sup>2</sup>  
**Power supply voltage:** 24 VDC (+/- 10%)  
**Power consumption:** max. 750 mA (typically < 500 mA)  
(max. 18W @ 24 VDC)

**CPU:** Rockchip RK 3566, Quad-core Cortex-A55 1.8GHz  
**RAM:** 2 GB DDR3  
**Storage:** 16 GB NAND flash  
**OS:** Android 11  
**Card slot:** µSD cards up to 32 GB  
**Wi-Fi:** 802.11b/g/n  
**Ethernet:** 10/100 Mbps autodetect  
**USB:** 2 x USB  
**IP-class:** 44 (when door mounted)

#### Dimensions:



#### Installation:



#### Connections:

