

# HTemp-485 Box2

## RS-485 humidity and temperature sensor

---

An RS-485 digital temperature and humidity sensor. The sensor has minimal power consumption and can be powered from a wide power supply range. It can be connected to Poseidon 2250 and Poseidon2 4002.

- Measured temperature and humidity are sent already in °C or % of humidity using a simple text protocol.
- You can connect up to 32 sensors over a 4-wire bus that contains a RS-485 line and a power source, up to the distance of 1000m.



RS-485 protocol is compatible with Temp-485 sensor, measured values of temperature and humidity are read over RS-485 bus as two independent measurements, each with different address. So each H-Temp device has two different RS-485 communication addresses. Capital letter stands for temperature address, small letter for humidity address.

### Applications

---

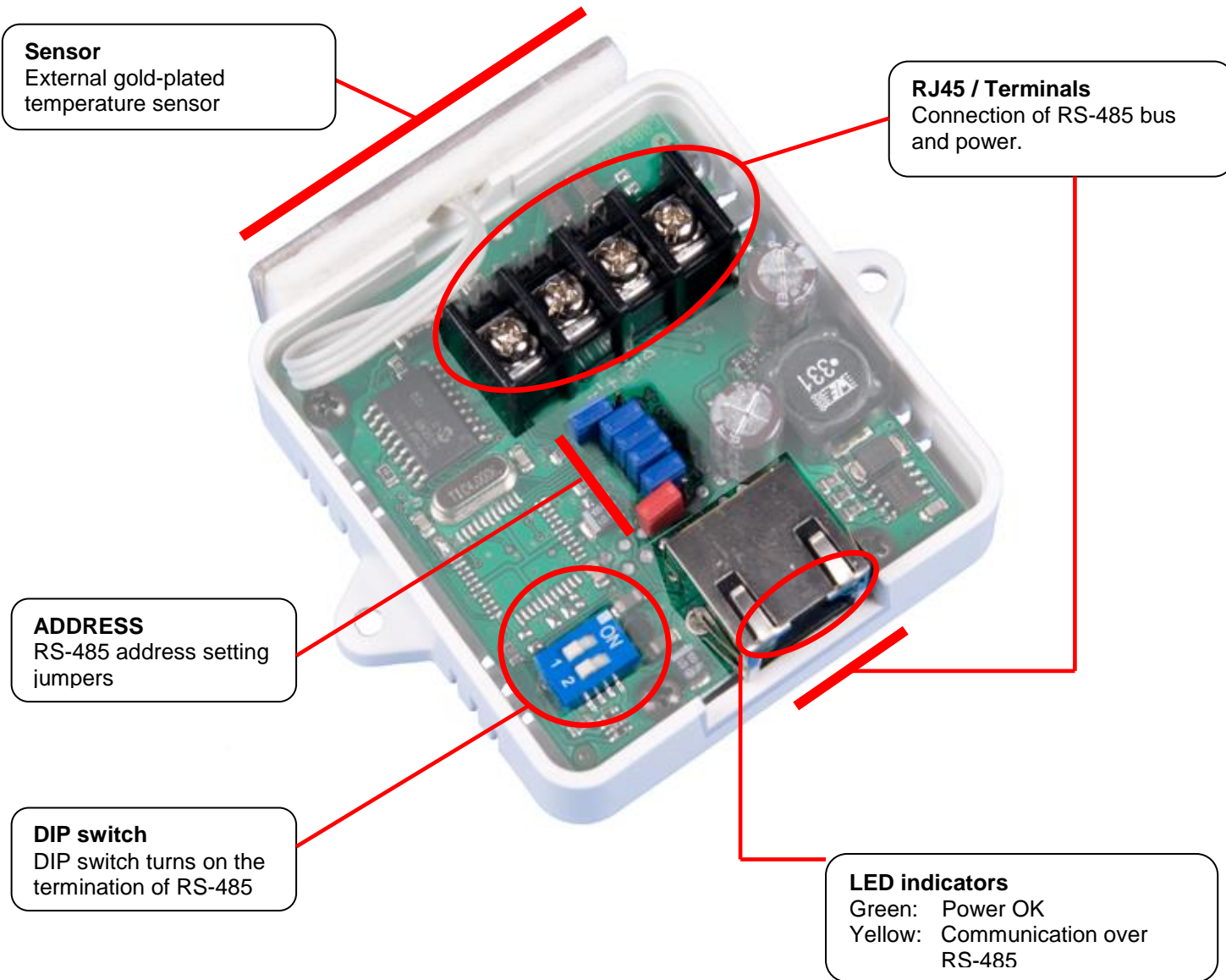
- Industry measurement and regulation – large temperature measuring systems
- Temperature measuring of storage, industrial or residential premises.
- When connected to a Poseidon device – measurements in technological premises and data transfer over Ethernet network

### Basic features

---

- Relative humidity measurement from 0% to 100%
- Temperature measurement from -10°C up to +85°C
- RS-485 communication
  - Compatible with Poseidon 2250
  - Compatible with Poseidon2 4002
- LED indication of reading the values
- Minimum power consumption, no need for voltage regulation
- DIP switch selectable RS-485 termination
- Sensor address can be set:
  - Using jumpers
  - In terminal SETUP mode
- Easy wall mounting

**Parameters**



Measured temperature range..... -10°C up to +70°C  
 Temperature measurement accuracy ..... ± 0.8 °C

Measured humidity range..... 0% to 100%  
 Relative Humidity accuracy..... 5% RH in range from 0% to 90% (20°C to 40°C)

Setting RS-485 address..... Jumper or SETUP mode

**Power voltage**..... +8V to +30V DC, polarity reversing protection  
 RS-485 termination ..... Optional (DIP1 and 2), always 10 kΩ for idle state of the line

Wire connection ..... Terminal board / RJ45

Outer box dimensions: ..... 80 x 64 x 67 mm (IP20)

Wall mounting: ..... Mounting the sensor on the wall by two screws

**Ordering codes**

<b>HTemp-485 Box2</b>	Indoor temperature and humidity sensor with RJ45 and terminal for RS-485 connection
-----------------------	---