

# HWg-PWR

Energy consumption measurement over IP using 3/12/25 M-Bus meters

The HWg-PWR is an Ethernet device for remote monitoring and reading of energy meters. You can connect up to 25 M-Bus meters of electricity, heat, gas or water.

The HWg-PWR will send an email with a weekly/monthly summary for invoicing. The report contains consumption and price for each meter (customer)

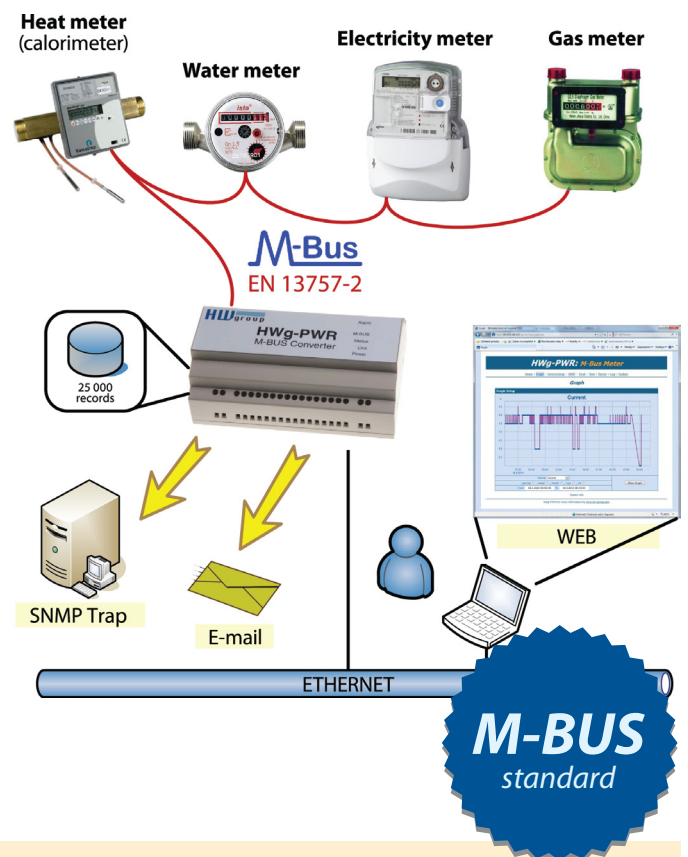
The HWg-PWR supports graphs of consumption and prices over its internal web server. If you exceed the preset consumption, the device will notify you (e-mail, SNMP Trap, SMS). This is useful for detecting outages or pipeline damage.

M-Bus is an European standard in energy metering (EN 13757). The M-Bus interface is supported by most of the meter manufactures.

Certified M-Bus meters can be used for charge metering. The M-Bus meters even provide additional values like Voltage, Current, cos Fi Flow, Drift, etc.

## Usage examples

- Remote monitoring of electricity meters in small server rooms and BTS
- Monitoring of energy consumption in rented premises
- Acquiring energy consumption readings in remote or inaccessible areas
- Control over energy costs
- Checking for individual line overloads in three phase wirings
- Checking for undervoltage in electric wirings
- Monitoring the flow of liquids



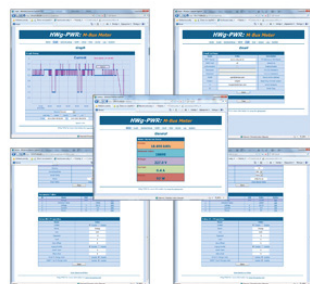
M-Bus input	Ethernet output
✓ Electricity meter	✓ WEB, graphs
✓ Water meter	✓ SNMP
✓ Gas meter	✓ Alarm messages
✓ Heat meter	✓ Periodical email

## Features

- Measures using 3 / 12 / 25 external meters (electricity, heat, gas, water) with an M-Bus interface.
- Automatic detection of the connected meters and their measured parameters.
- Reads up to 100 values of all the connected M-Bus meters.
- Logs the measured values. The internal memory holds up to 170 000 values.
- 8 voltage inputs for 230V (common protective conductor). Usable for phase or power outage detection.
- The HWg-PWR includes a power source for the M-Bus. It can be mounted on a DIN rail.
- Periodical reporting of the measured values – ideal for billing consumption on remote locations.
- Alarm (e-mail / SMS) when a value is out of range. Usable for detecting pipeline damage or aircon outages.
- M-Bus offers a wide range of certified meters from many manufacturers.
- Data can be read over IP (HTTP and e-mail) using a windows application – the HWg-PDMS. It includes a native MS Excel data export.

## HWg-PWR 3 / 12 / 25

<b>External M-Bus meters</b>	
HWg-PWR 3	3
HWg-PWR 12	12
HWg-PWR 25	25
<b>Digital Inputs</b>	8x (110/230V)
<b>Email alert</b>	✓
<b>Email reports (consumption)</b>	✓
<b>HWg-PUSH protocol</b>	✓
<b>M-Bus</b>	3/12/25 meters powered from HWg-PWR 100 variables for all M-Bus devices
<b>Ethernet</b>	100 Base Tx
<b>IP protocols</b>	ARP, TCP/IP (HTTP, NTP, SMTP, Modbus/TCP), UDP/IP (SNMP)
<b>M2M protocols</b>	HTTP (XML), SNMP, SNMP Trap, Modbus/TCP, HWg-PUSH
<b>Accuracy</b>	depends on the connected meter
<b>Power supply</b>	110V/230V (10W)



## Optional accessories



Meter 3f ED 310.DB HWG



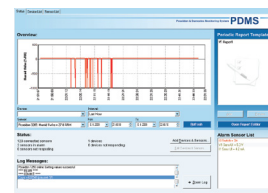
M-Count 2C



Meter 3f ED 310.I.DB HWG



CLA 3.1



HWg-PDMS

<b>HWg-PDMS 20</b>	A windows application that collects data to a database and can export to MS Excel (20 values)
<b>Meter 3f ED 310.DB HWG</b>	Three-phase two-tariff electricity meter 63A with M-Bus and SO <b>for direct measurement</b>
<b>Meter 1f DHZ 5/63-M-BUS</b>	Single-phase electricity meter 63A with M-Bus
<b>M-Count 2C</b>	Converter and datalogger 2x switching output (SO) / M-Bus
<b>Meter 3f ED 310.I.DB HWG</b>	Three-phase two-tariff electricity meter 63A with M-Bus and SO <b>for indirect measurement</b>
<b>CLA 3.1</b>	Current transformer 1000A/5A, accuracy class 0.5S, power 10VA
<b>CLB 2.65</b>	Current transformer 200A/5A, accuracy class 0.5S, power 10VA