

MTX-Router-EOS



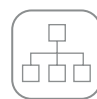


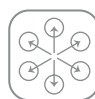








LTE/4G, dual SIM & 3x Ethernet compact industrial IoT router

The MTX-Router-EOS is an entry level router developed for industrial applications. It has a very compact design with a very rugged enclosure and accessories to be mounted on a wall mount. It features dual SIM, 3x Ethernet, VPN client and 3 antennas included (another one for GPS optional).

The MTX-Router-EOS can be used in many different IoT applications like kiosk, telemetry, remote sensing, smart grid, security, industrial automation, etc.



Main Features

 4G	 Dual SIM	 WiFi	 3x Ethernet	 RS232 RS485	 DIN rail	 Modbus	 VPN
 DHCP	 Firewall	 Serial tunnelling	 DynDNS	 Programmable autoreset	 MQTT	 SMS control	

Strenghts & Benefits

- Entry level router.
- With dual SIM.
- It has 3x Ethernet ports.
- 3x antennas included, and another one for GPS optional.
- Remote management via MQTT, SMS or web server.
- DIN rail.

Applications

- For industrial IoT applications like kiosk, telemetry, remote sensing, smart grid, security, industrial automation, etc.

Specifications

Router-EOS 4G

EUROPE: LTE-FDD B1/B3/B7/B8/B20/B28A; LTE-TDD B38/B40/B41, WCDMA B1/B8; GSM/EDGE B3/B8; GNSS GPS/GLONASS/BeiDou (Compass)/Galileo/QZSS (optional)

AUSTRALIA: LTE-FDD B1/B2/B3/B4/B5/B7/B8/B28; LTE-TDD B40; WCDMA B1/B2/B5/B8; GSM/EDGE B2/B3/B5/B8; GNSS GPS/GLONASS/BeiDou (Compass)/Galileo/QZSS (optional)

LTE FDD: DL 150Mbps, UL 50Mbps

LTE-TDD: DL 130Mbps, UL 30Mbps

DC-HSPA+: DL 42Mbps, UL 5.76Mbps

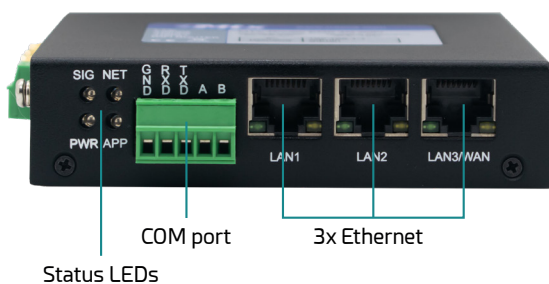
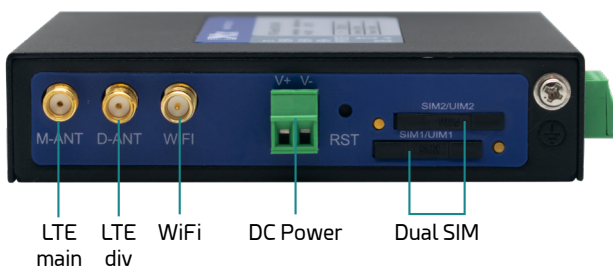
WCDMA: DL 384Mbps, UL 384kbps

EDGE: DL 296Mbps, UL 236.8kbps

GPRS: DL 107Mbps, UL 85.6kbps

Interfaces

- 4G/3G/2G connectivity
- 3x Ethernet 10/100 BaseT
- 1x COM (RS232 or RS485)
- WiFi 802.11 b/g/n
- GPS (optional)



Connectors

- 2x SMA F antenna connectors: LTE
- 1x SMA F RP antenna connector: WiFi
- 1x SMA F antenna connectors: GPS (optional)
- 3x RJ45: Ethernet 10/100 BaseT
- 1x terminal block: RS232/485
- Dual SIM card
- DC power terminal block: power input

Characteristics

- Status LEDs
- DIN rail
- DC input: 5-35 Vdc Phoenix type
- Temperature range: -35 - 75°C
- Dimensions: 115x97x24mm
- Weight: 390gr.
- Certifications: CE, FCC, RoHS, ISO9001

Software Features

- DHCP server
- NAT/IP firewall
- Serial tunnelling
- Multiple DDNS provider supported
- Automatic data sending (MQTT)
- Schedule reboot, schedule online and off-line
- SMS control
- Remote management (web, SSH, Telnet)
- Remote firmware upgrade

Packing List Included

- DIN rail and wallmount kits
- Ethernet cable
- WiFi antennas
- LTE antennas

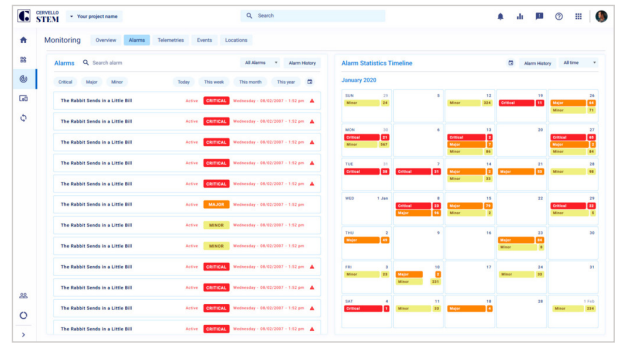
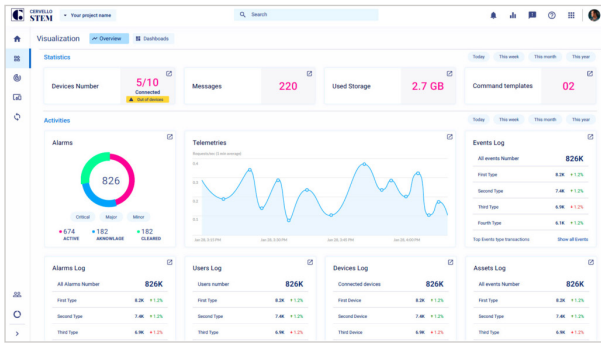
References

PRODUCTS

- | | |
|--------------------------------------|---------------------|
| ■ MTX-Router-EOS 4G WiFi | 000502300047 |
| ■ MTX-Router-EOS 4G WiFi GPS INT-AU* | 000502300050 |
| ■ MTX-Router-EOS 4G WiFi INT-AU* | 000502300051 |
| ■ MTX-Router-EOS 4G WiFi GPS* | 000502300057 |

*With MOQ

Cervello Stem - IoT Platform



GENERAL FEATURES

- Up to unlimited devices
- Autoprovisioning
- Real time dashboards
- Remote control
- Monitoring engine
- Alarms and alerts
- Rules engine
- Remote update
- Connect engine*
- API Keys*
- Analytics*
- Multi-tenant*
- White labeling*
- Custom admin role*

MONITOR

- Alarms, Events and Incidents
- Tracking*

CONTROL

- Command template
- OTA

DEVICES INVENTORY

- Add single from template
- Add Bulk from template and from autoprovisioning
- Manage: Device template, Groups, Assets and Bulk actions

CONNECT

- Topics*
- Transformation*
- Integration keys*

VISUALIZE

- Dashboards
- Reports

AUTOMATE

- Rules Engine
- Actions
- Triggers

SECURITY

- 2-factor authentication
- SSL for end user application
- Custom admin roles*

*Upgrade required

**Available with compatible devices with MTX-Tunnel or MTX-Titan

The equipment may vary from the description in this document. Webdyn reserves the right to make changes to the product(s) and/or information contained herein without notice. This document may not be considered as a contract specification.