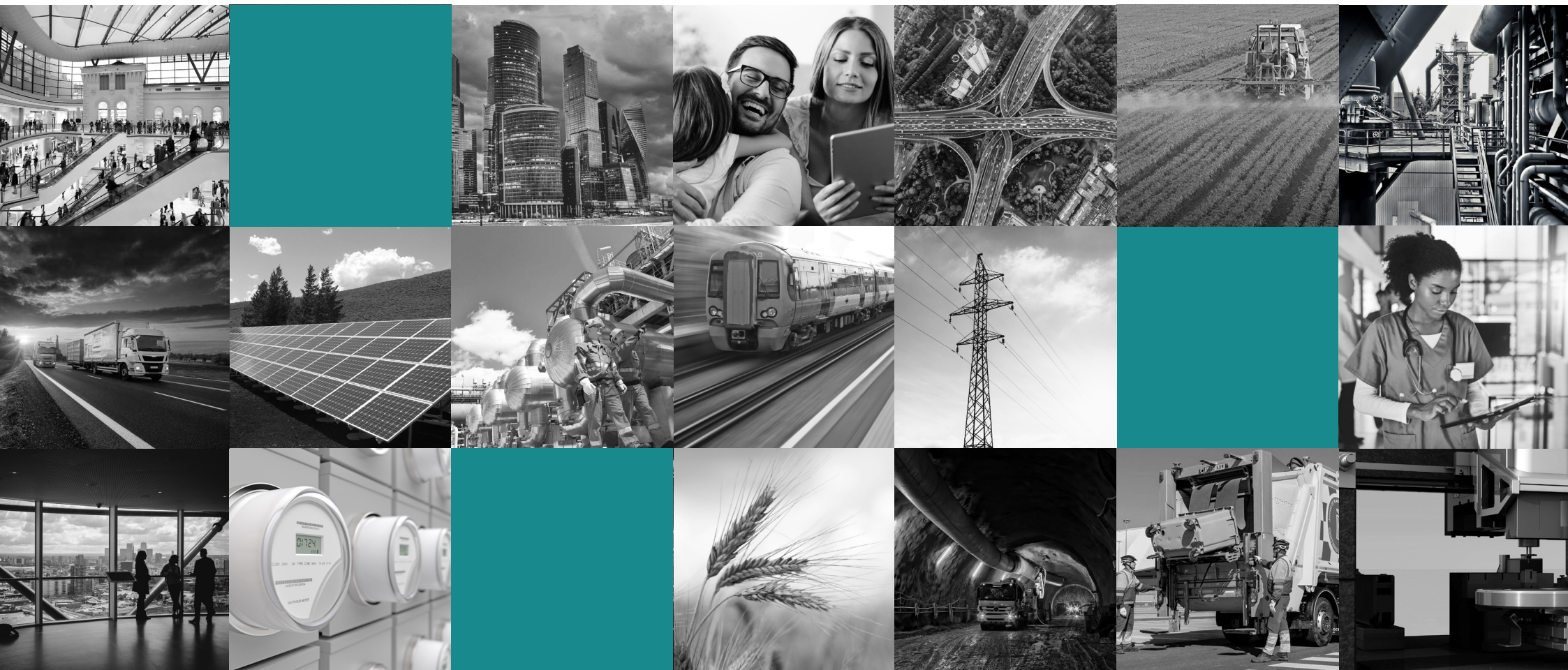


Product Catalogue

Vertical Solutions | Routers | Modems | IoT Platform & Software



Contents

Page 4	Smart Grid & Photovoltaic Stay connected to your field data
Page 5	Smart Cities The best way to connect your city services
Page 6	Smart Building & Home Make life easier by connecting your buildings
Page 8.....	Smart Metering IoT solutions for metering
Page 10	Smart Industry 4.0 Revolutionize your industrial production
Page 12	Modems, Routers & Accessories Multipurpose devices and accessories
Page 15	Cervello Stem & Software Our powerful IoT platform and software included in compatible devices
Page 18	What & Where

Why Webdyn

At Webdyn we work to manufacture the best IoT devices on the market. Our product portfolio is designed to help our customers access opportunities within the rapidly growing IoT and industrial IoT environment. We design modems, gateways, routers and IoT software solutions. From automation, metering or photovoltaic, to public transportation connectivity – hundreds of thousands of our networking devices are currently at the heart of our customers’ IoT solutions.



Smart Grid & Photovoltaic
Managing power production and consumption thanks to the use of wireless communications in solar installations.



Smart Cities
Connected sensors, vehicles, and devices require secure and reliable IoT connectivity products.



Smart Building & Home
Smart building management thanks to a smart network of wireless devices and cloud management systems.



Smart Metering
Real-time information on power consumption for a more sustainable world.



Smart Industry 4.0
Global adoption of automation demands the ability to monitor and manage equipment remotely to increase productivity.



Smart Transportation
Communication devices with certificates for transportation, to achieve a more intelligent transportation network.

Smart Grid & Photovoltaic

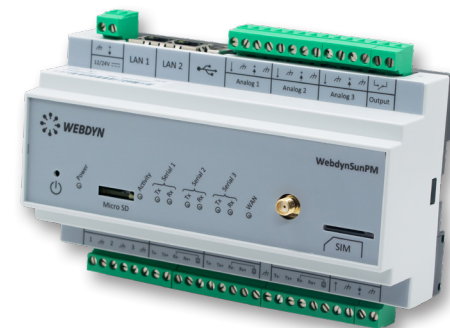
Stay connected to your field data



WebdynSun

Gateway for solar plants that monitors and collects data from solar plants in a single device.

- RS485/232
- TIC meter
- Pulse inputs
- Analog inputs
- Digital I/O
- Ethernet
- DIN rail
- Plug & Play
- Remote configuration
- Alarms



WebdynSunPM

Gateway for solar plants with Power Management that collects and analyzes data, and manages photovoltaic installations.

- RS485
- 0-10V / 4-20mA
- Pulse inputs
- Relay
- Ethernet
- DIN rail
- User programmable
- Compatible with most platforms
- Secure MQTT, MQTTS, FTP/S
- Plug & Play
- Remote configuration
- PM: zero injection capability

Smart Cities

The best way to connect your city services



WebdynEasy LoRaWAN

The WebdynEasy LoRaWAN platform is specific to wireless networks using LoRa radio technology.

- 4G/3G
- LoRaWAN
- RS485/422
- Ethernet
- Open VPN
- Webservices
- Plug & Play
- Remote configuration
- Modbus RTU and TCP
- FTP/S, HTTP/S connection



MTX-StarSensor

LTE/4G IoT modem for sensor control with IP67, Ultra Low Power, and primary batteries up to 10 years autonomy.

- 4G/3G
- Dual SIM
- IP67
- Ultra Low Power
- 1x sensor power supply
- Primary batteries
- Additional optional features

Smart Building & Home

Make life easier by connecting your buildings



WebdynEasy W M-Bus 868MHz

The WebdynEasy W M-Bus 868MHz hub is designed for wireless networks using wireless M-Bus radio technology.

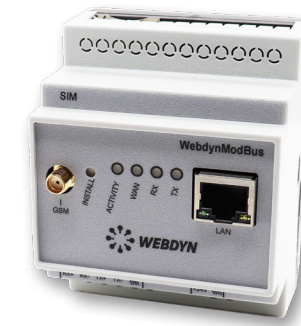
- LTE-M/NB-IoT, 2G
- Wireless M-Bus
- BLE (optional)
- Battery
- Wallmount
- DIN rail (optional)
- Plug & Play
- Remote configuration
- FTP/S connection
- Data encryption



WebdynEasy LoRaWAN

The WebdynEasy LoRaWAN platform is specific to wireless networks using LoRa radio technology.

- 4G/3G
- LoRaWAN
- RS485/422
- Ethernet
- Open VPN
- Webservices
- Plug & Play
- Remote configuration
- Modbus RTU and TCP
- FTP/S, HTTP/S connection



WebdynModbus

The WebdynModbus gateway is used to monitor and collect data from Modbus equipment (slaves).

- 4G/3G
- Ethernet
- RS485
- Modbus TCP and RTU
- DIN rail
- Plug & Play
- Remote configuration



MTX-Router-Q

An innovative LTE cat.4/4G entry level industrial IoT router with Gigabit Ethernet, and 3G/2G fallback.

- 4G/3G/2G
- GigaEthernet
- AC power supply
- LiPo battery
- DIN rail
- Webserver
- SMS control
- Email
- VPN: IPSEC, OpenVPN

■ Highlights

Specifically designed for **building and home management**.

Control energy efficiency, temperature control, security, maintenance, etc.

Also ideal for **industrial equipment** and products: PLCs, machines, boilers, air conditioning, etc.

Remote control in real time through mobile devices, computers, etc., and monitor your data with our IoT platform.

Smart Metering

IoT solutions for metering



MTX-StarEnergy-M

The MTX-StarEnergy-M is an innovative industrial modem with a set of features specially oriented for the electric market.

- 4G/3G/2G
- USB 2.0
- RS232/422/485
- 230V
- DIN rail
- Webserver
- Serial gateway
- SNMPv3
- TACACS+
- Watchdog
- CSD



MTX-StarEnergy-E

Innovative industrial modem that comprises a set of features specially oriented to the electric market.

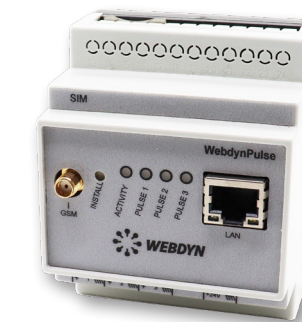
- 4G/3G/2G
- USB 2.0
- RS232/422/485
- AC&DC powered
- DIN rail, wall mount
- CSD
- Webserver
- Serial gateway
- SNMPv3
- TACACS+
- Firewall
- Watchdog



MTX-StarWater

MTX-StarWater is a smart communication system for the management of cold and hot water supply networks.

- LTE-M/NB-IoT, 2G
- Worldwide bands
- RS485
- BUS UNE82326
- Dig. pulse input
- Internal battery
- Ultra Low Power
- IP66/67
- Industrial temperature
- Configurable firmware



WebdynPulse

The WebdynPulse gateway is used to share all the data from three meters with a pulse output in a single box.

- 2G
- Ethernet
- 3 pulse inputs
- DIN rail
- Plug & Play
- Remote configuration

Highlights

Plan and control electricity, gas and water consumption.

Monitor energy consumption in real time to apply consumption good practices. This optimization allows them to make significant energy savings.

Energy efficiency economic model, sharing of savings with customers.

Multi-fluid meters: remote reading of water, electricity, and gas meters...

Smart Industry 4.0

Revolutionize your industrial production



MTX-Router-Titan II-S

LTE/4G/3G/2G industrial IoT router that provides an easy integration and a variety of powerful interfaces.

- 4G/3G/2G
- Ethernet
- RS232, RS485
- WiFi
- 2x digital inputs
- USB
- DIN rail
- Webserver
- Modbus
- Datalogger
- HTTP/S, MQTT/S, FTP/S
- VPN: IPSEC, OpenVPN



MTX-Router-EOS

Entry level compact IoT device developed for industrial applications, with LTE/4G, dual SIM and 3x Ethernet.

- 4G/3G/2G
- Dual SIM
- WiFi
- 3x Ethernet
- RS232, RS485
- DIN rail
- Modbus
- DHCP
- Firewall
- Serial tunnelling
- MQTT
- VPN



MTX-IoT-S

Innovative and powerful all-in-one solution for the IoT sector, with LTE/4G connectivity, 8x digital I/O, 2x ADC, ULP and battery.

- 4G/3G/2G
- RS232, RS485
- 8x digital I/Os
- 2x ADC, 4x DAC
- Latch relay
- Ultra Low Power
- GPS
- GPIO management
- Relay management
- MQTT/s
- Modbus
- Datalogger

■ Highlights

Ideal for a wide range of **industrial equipment** and different products: PLCs, machines, boilers, air conditioning, etc.

Improvement of **city management**: development of personalized products as needed.

Connect machines, tools, sensors, and other equipment on the floor to give process engineers and managers more **visibility** of the production.

Modems, Routers & Accessories



MTX-StarSensor

Powerful modem for monitoring.

- 4G/3G
- Dual SIM
- IP67
- Ultra Low Power
- 1x sensor pw supply
- Primary batteries
- Additional hw features

AGRICULTURE SMART CITIES METERING BMS



MTX-IoT-S

LTE/4G programmable modem.

- 4G/3G
- RS232/485
- 8x digital I/O
- 2x ADC, 4xDAC
- Dual SIM
- Latch relay
- Ultra Low Power
- GPS

SMART CITIES METERING INDUSTRY
TRANSPORTATION BMS



MTX-StarRoad II

IoT router for automotive with ITxPT.

- LTE /4G
- 2x RS232/485
- 8x DI, 4x DO
- 2x CAN
- 1x Ethernet
- 1x HDMI
- GPS
- ITxPT compliant

TRANSPORTATION



MTX-Router-Titan II-S

LTE/4G/3G industrial IoT router.

- 4G/3G/2G
- Ethernet
- RS232/485
- WiFi
- Digital input
- USB 2.0
- DIN rail
- Titan software

SMART CITIES METERING INDUSTRY TRANSPORTATION



MTX-Router-EOS

4G, dual SIM & 3x Ethernet router.

- 4G/3G/2G
- Dual SIM
- WiFi
- 3x Ethernet
- RS232/485
- DIN rail
- Modbus
- Serial tunnelling

SMART CITIES INDUSTRY TRANSPORTATION BMS



MTX-Router-Q

LTE cat.4/4G entry level router.

- 4G/3G/2G
- Giga Ethernet
- AC power
- LiPo battery
- DIN rail
- Webserver
- SMS control
- Email

SMART CITIES INDUSTRY BMS



MTX-Router-Titan mini

4G/3G/GSM/GPRS compact router.

- 4G/3G/2G
- Ethernet
- RS232/485
- WiFi
- Relays
- USB 2.0
- Accelerometer
- Titan software

SMART CITIES METERING INDUSTRY TRANSPORTATION

Sensors



Sens'RF LoRaWAN

To measure and send local data.

- Sensitivity -136dBm
- 10 years autonomy
- Long radio range
- Resistance to noise



Sens' Temperature

Contact temperature sensor.

- 1x 4..20 mA, max. load 500 Ω
- Power supply 15..24V
- 0 to +50°C
- Protection IP65



MTX-OpticalProbe IEC

For data communication.

- IEC62056-21 and EIA232
- +3.3~5VDC, 15mA
- DB9 male connector
- Magnetic adhesion



MTX-Sensor TEMP

For living areas, servers...

- Range -55 to 125 °C
- Accuracy of ± 0.5 °C
- Resolution 0.1 °C
- Communication ASCII

Accessories

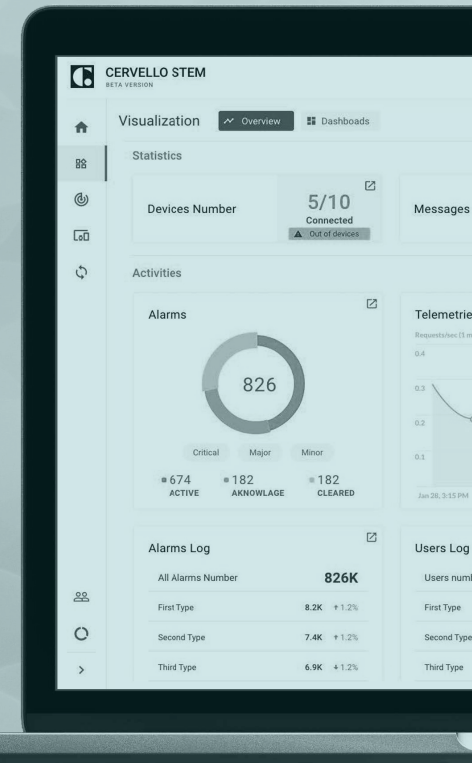
At Webdyn we offer a wide range of accessories for our devices with LTE/4G/3G/GPRS connectivity, GPS/GNSS, WiFi, Bluetooth, etc. Read the QR code and discover all available accessories in our catalog and website.

- **POWER SUPPLIES:** all kinds of power supplies and Li-Po batteries for industrial equipment.
- **ANTENNAS:** LTE/4G, 3G, 2G, WiFi, and GPS antennas in several formats and different types of cables, lengths and connectors.
- **RF and DATA CABLES:** coaxial and data cables with different types of connectors.
- **CONNECTOR ADAPTERS:** RF and data connectors adapters (SMA-FME, DB15-terminal block, DB15-DB9...).
- **DIN RAIL ACCESSORIES:** accessories for the assembly of DIN rail with Webdyn devices.



Cervello Stem

An IoT platform designed for your needs



Security

Comprehensive security capabilities to satisfy the most demanding requirements.

Interoperability

Integrate it with significant amount of legacy operations technologies including SCADA, M2M and other on-premises infrastructures.

Features

Save your time managing devices:

- Data collection
- Data processing

Locate your devices quickly:

- Location monitoring
- Asset visualization

Automate based on real time data:

- Command templates
- Rules engine

Scalability

Access as much or as little data as you need, and scale up and down as it is required by adding new devices.

Programmability

It has remote control, and flexible and adaptable configurations with drag and drop, and custom code.

Monitor remotely, get notified in real time:

- Alarms
- Events

Connect anything to Cervello Stem:

- 3rd party integrations
- No SDK

Design your dashboard, arrange widgets:

- Customized dashboard
- Dashboard widgets

Software

MTX-Titan

Included in all MTX-Router-Titan devices, the configuration can be intuitively done from any computer.

Serial gateways:

- 3 simultaneous gateways
- Modes: TCP server/TCP client
- SSH encryption enabled
- Incoming CSD call for metering applications

Modbus:

- Modbus TCP/Modbus RTU gateway
- Modbus TCP/RTU to SNMP gateway (SNMP)
- Modbus slave RTU/TCP
- User scripts

Datalogger:

- Data from sensors (temperature, distance...)
- Serial data collected by RS232, RS485 or USB
- GPS data for tracking applications
- Automatic data sending with JSON format

SMS:

- Full control by SMS with phone authorizations
- Alarms (digital input, temp., M-Bus data read)
- Send/receive SMS by Modbus TCP (for PLC)

Sensor compatible:

- Temperature, distance and other sensors
- Modbus RTU/TCP sensors
- RF868 LPWAN sensors
- Internal jamming detection sensor with alarm

VPN:

- IPSEC + OpenVPN with client/server mode (25 clients)
- Permanent or activated by SMS, AT command...

Other:

- Compatible with DynDNS/No-IP & private DNS
- GSM cell location
- Programmable autoreset (schedule, timer...)
- Multioperator SIM utilities (integrated RSSI)
- Time synchronization (NTP) with timezones
- Over The Air firmware upgrade
- Full management with AT command
- NAT, firewall, DHCP, etc. and other features
- 4G connectivity supervisor
- Traffic control, TACACS+ multiuser profiles

16

MTX-Tunnel

Included in all compatible modems, it turns them into powerful LTE/4G/3G/GPRS series gateways.

Connectivity:

- 4G/3G/2G serial gateways: TCP client, TCP server, UDP client/server, accept incoming CSD calls, up to 2 simultaneous tunnel
- IP connectivity mode: permanent 100% time, under request (SMS, missed call), change on a digital input, analog input out of level, serial data on RS232/RS485 port, scheduled date/hour/time

TCP services:

- Web server, Telnet, SNMP, TACACS+, NTP
- Datalogger: MQTT, MQTTs, HTTP, HTTPs, FTP
- Shows the status of digital and analog inputs
- Change digital output level and relays
- Execute AT commands remotely: Telnet, MQTT/MQTTs, SMS, HTTP

Security:

- Authorized phone numbers
- Firewall IP, SSL/TLS connections, encrypted configuration
- Secure OTAP (remote FW upgrade)
- Watchdog hardware

17

Alarms:

- Send SMS/MQTT alarm when the level of digital or analog input change
- SMS can be sent to up to 10 remote users
- Execute remote AT commands
- Change the status of digital outputs & relays
- Customizable SMS commands

Metering, modbus, sensors:

- 868 MHz remote monitoring sensors (LPWAN)
- Master for Modbus RTU devices, Modbus TCP slave, Modbus TCP to RTU gateway
- Relays control
- Access to serial devices using 4G/3G/2G and GSM
- Astronomical clock

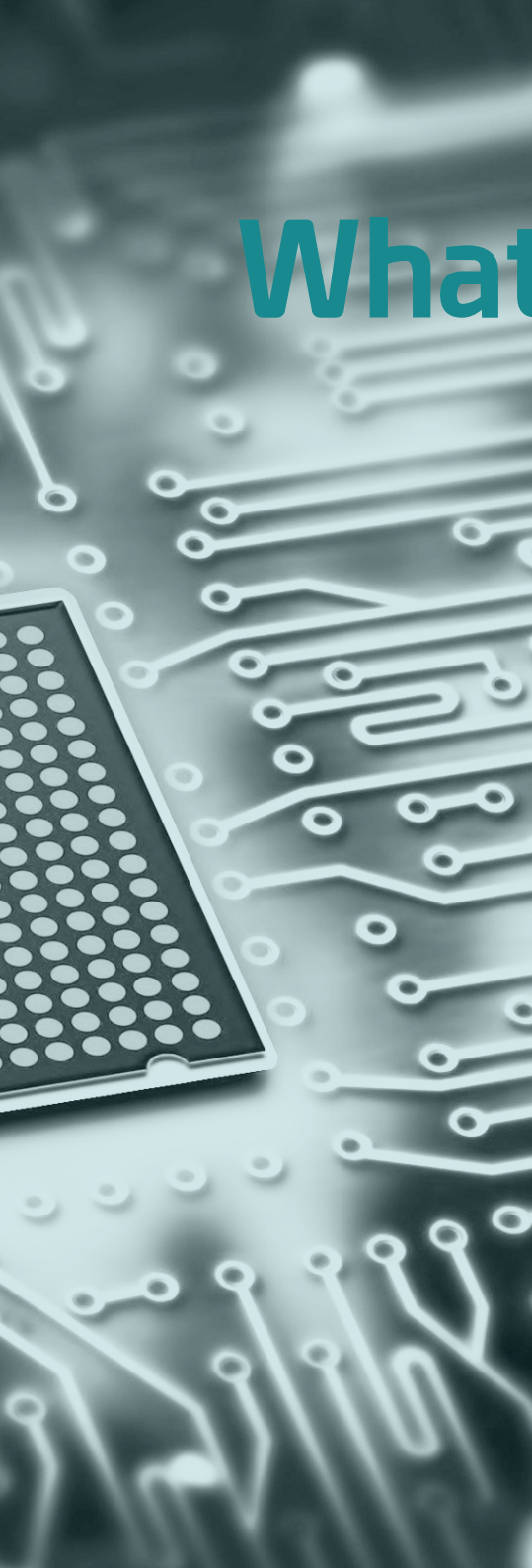
Solutions for dynamic IP:

- IP session using a SMS or missed call
- DynDNS and NoIP
- Private DNS

■ Highlights

The [MTX-Titan software](#) can connect locally via Ethernet or WiFi, or remotely via 4G/3G/2G. It can also connect via SMS, Modbus RTU, Modbus TCP and SNMP.

The [MTX-Tunnel software](#) provides remote connectivity to devices that only have an RS232 or RS485 serial port, so they become smart devices, and are able to send sensor data (temperature, humidity, pulse counters...) to the cloud.



What & Where

At Webdyn we have a complete team of R&D engineers devoted to the development of hardware, firmware and software.

We are committed to offering an integral solution to any IoT project. From the design and manufacturing of IoT devices to the programming of our IoT platform, Cervello Stem. Our devices range from basic equipment with easy installation and configuration, to expert equipment for the most complex solutions (photovoltaic, metering, BMS, transportation, etc.). To our wide range of products, we can also add our ability to customize our products to the needs of any project our customers may have.

Our Team

Webdyn has a team of 70 R&D engineers dedicated to the development of our high quality products.

- 15 hardware engineers
- 13 firmware engineers
- 47 software engineers
- 6 QA engineers

Technical Support

We have a team of specialized engineers who will provide you with one of the most advanced technical support in the IoT industry.

- 18 technical support engineers
- 14 technicians managing manufacturing subcontractors
- 24 hours a day, 365 days a year

R&D Offices

- Madrid (Spain)
- Paris (France)
- Barcelona (Spain)
- Seville (Spain)
- Cairo (Egypt)

Commercial Offices

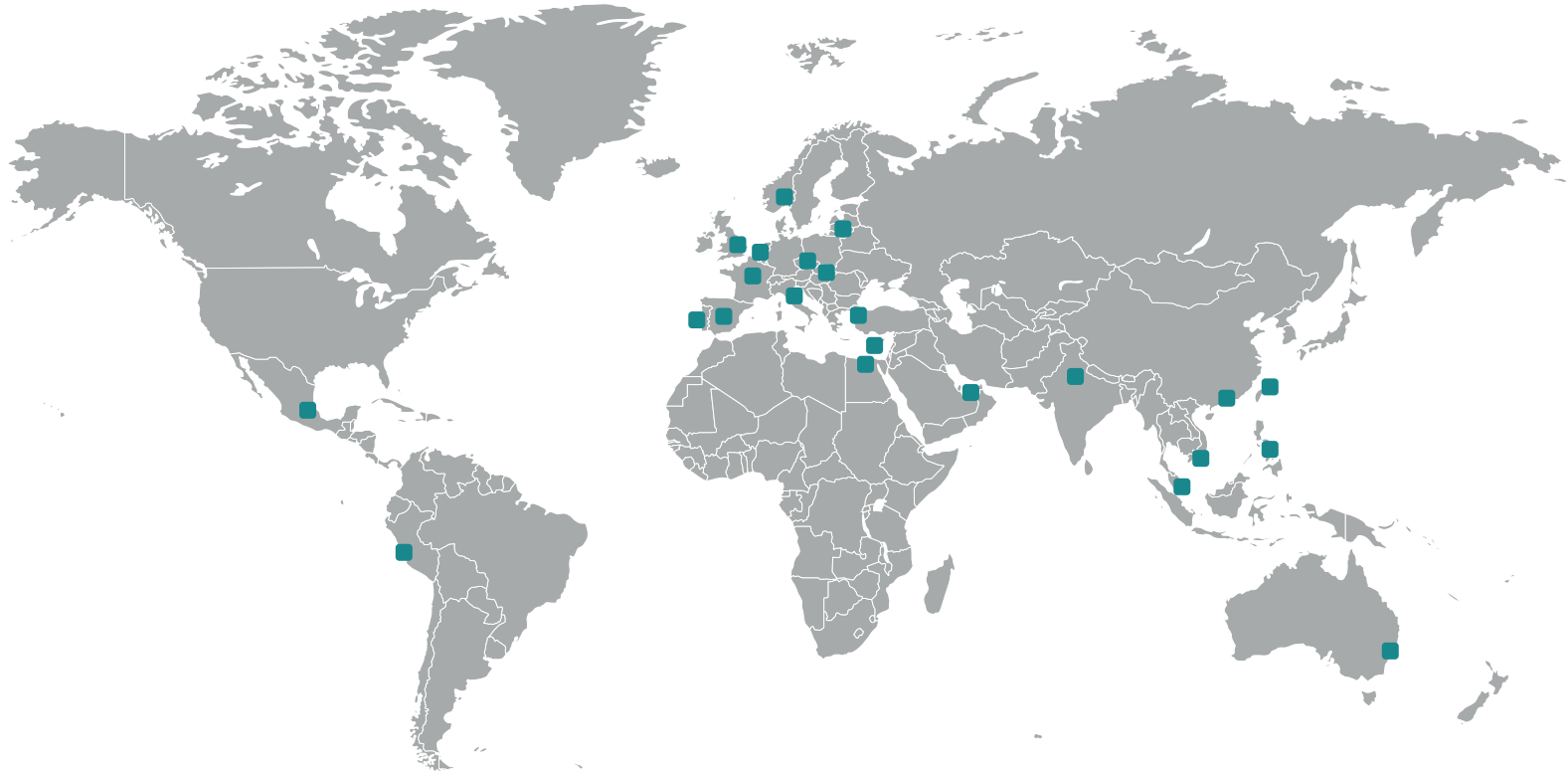
- Delhi (India)
- Lisbon (Portugal)
- Dubai (UAE)
- Lima (Peru)
- Taipei (Taiwan)

Distributors

- Syscom-ProREP (France)
- Tyrrell (UK)
- Maritex (Poland)
- Alcom (Benelux)
- Elteco (Norway)
- DeltaM2M (Denmark)

- Melchioni (Italy)
- Sigint Solutions (Cyprus)
- FCC PS (Czech Rep.)
- Gamaxnet (Hungary)
- Infopulsas (Lithuania)
- Scatek (Turkey)
- Smart Leader (Taiwan)
- Liseng (Hong Kong)

- FutureFirst (Singapore)
- Oritech (Vietnam)
- RSPOT (Philippines)
- Australis M2M (Australia)
- Amplicon (EAU)
- AresM2M (Peru)
- Enertronics (Mexico)





SPAIN | FRANCE | INDIA | EGYPT | PORTUGAL | APAC

www.webdyn.com | contact@webdyn.com