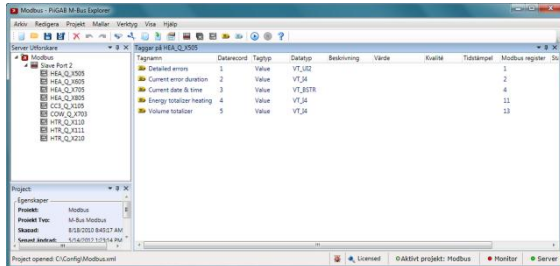


PiiGAB Explorer



Interface for configuration

Features:

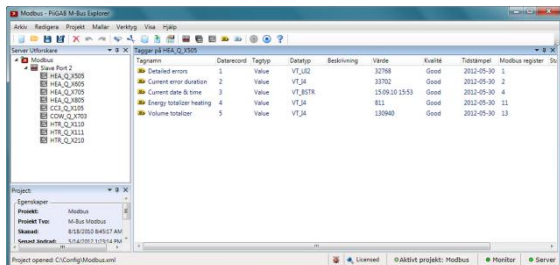
- Common configuration interface
- Foreseeable configuration
- Backup of project
- Project based
- The latest interface technique
- Create and import meter templates
- Multilanguage support

PiiGAB Explorer is the common interface used to configure PiiGAB M-Bus OPC Server as well as Modbus and M-Bus ASCII in PiiGAB M-Bus 900.

PiiGAB Explorer is PiiGAB's general configuration platform for the PiiGAB M-Bus OPC Server, The PiiGAB M-Bus 900 Modbus as well as the PiiGAB M-Bus 900 ASCII. This configuration interface brings new possibilities to PiiGABs products. The PiiGAB Explorer's purpose is to be a common tool for configuration of PiiGABs products now and in the future.

You can download the PiiGAB Explorer directly from our website and start configuring. The PiiGAB explorer can be used no matter the size of your project. The license key is only connected to the PiiGAB M-Bus OPC Server and not the interface itself. To work as effectively as possible it is possible to create and import templates for different meters.

PiiGAB M-Bus OPC Server



Interface in monitor mode

Features:

- Generic M-Bus OPC Server
- Mix different M-Bus meters
- Single and multi-telegram
- Primary and secondary addressing
- Heritage operation of parameters
- Readout of manufacturer specific data
- Supports variable and fixed data mode
- Supports TCP, UDP and serial communication
- Thin OPC Server
- OPC Foundation certified
- Supports OPC DA 2.00, 2.05a and 3.00
- Writing for adjustment of temperature or to for example affect digital outputs on an electricity meter.

PiiGAB M-Bus OPC Server opens up completely new possibilities to communicate with heat meters, electricity meters, and water meters etc. The OPC Server is completely general, meaning you as the user can mix and match M-Bus meters from different manufacturers, independently of if it is single or multi telegram, if it has a primary or secondary address etc.

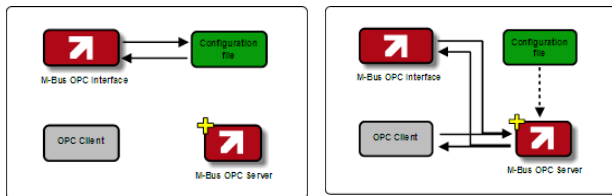
The PiiGAB M-Bus OPC Server is a completely general OPC Server. This means that you can mix and match different manufacturers of M-Bus meters on the same M-bus network. The M-Bus OPC Server supports "Variable and Fixed Data Structure" and it handles both primary and secondary addresses. The OPC-Server is what is called a thin server, meaning that the server and the OPC Interface are completely separate. This means that all necessary configurations can be made without starting the OPC-Server itself.

The OPC-Server makes it possible to read object values such as Value, Vib, Unit, Tariff, Storage, Function, Data type, Record etc. from M-Bus meters. Information that can be read from "the Header" is for example ID number, Manufacturer, Version, Medium, Access number, Status and Signature.

Configuration

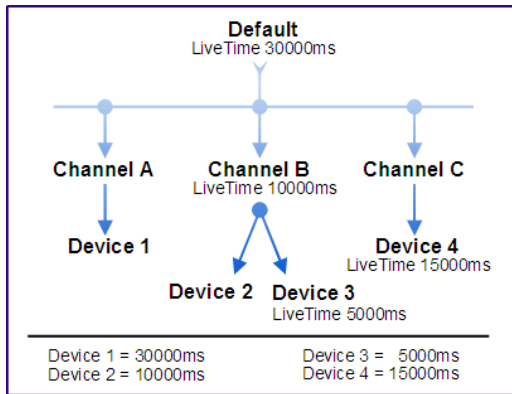
The OPC-Server is available in four different versions based on the amount of meters or addresses to be connected, 20, 250, 1000 or an unlimited amount of meters.

The OPC-Server is what is called a thin server, meaning that the server and the OPC Interface are completely separate. The server calls and reads the configuration file when the server starts. This gives benefits like the fact that you can configure another configuration file at the same time as your OPC server communicates with your M-Bus meters. So for example you can work with a backup of the configuration file or another project's configuration file without the communication being interrupted. If you want the server to use another configuration file instead, you will stop the OPC server and set the preferred configuration file as active (roll-back).



Heritage structure

Another advantage with the OPC server is that it works with so called inherited values. This means you don't have to set individual parameters for every connected meter, because depending on where within the hierarchy you indicate the parameter it will apply for all the underlying meters. The picture below illustrates how the Live Time value is inherited.



Order information:

Order number	Description
PI-EXPL20	Max 20 mätare ¹
PI-EXPL250	Max 250 mätare ¹
PI-EXPL1000	Max 1000 mätare ¹
PI-EXPLN	Unlimited number of meters
PI-SENSUSB	Sentinel USB key
PI-SOFTKEY	Software key

¹Can be updated to a bigger version.

Below you can see examples on some dialog boxes

Meter configuration

Tag configuration

The content in this document is without guarantees. PiGAB reserves the right to revise, change or correct the contents within this document without any prior notice.

Copyright © 2009 by PiGAB, Processinformation i Göteborg AB. All trademarks or registered trademarks are the property of their respective owners.